

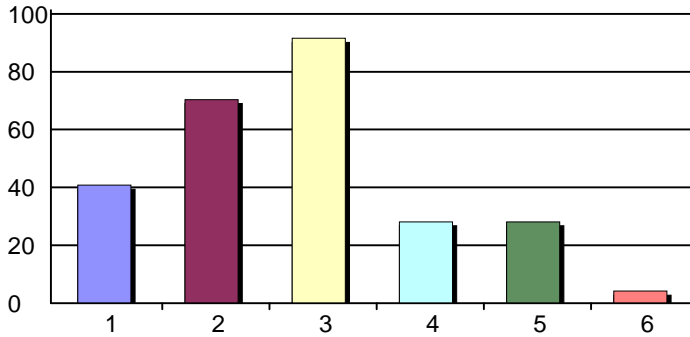
CME Needs Assessment Summary 2016-2017

Creation Date: 1/11/2017

Time Interval: 7/28/2016 to 12/5/2016

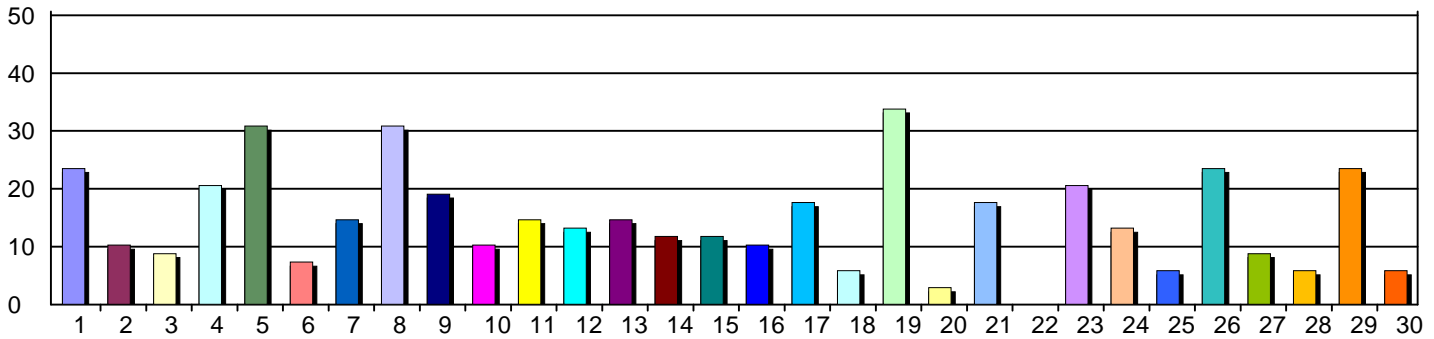
Total Respondents: 73

1. How do you utilize CME?



1. Provide information to patients	29	41%
2. Put new knowledge into practice	50	70%
3. To stay up-to-date	65	92%
4. Better understand indications/contraindicat...	20	28%
5. Share the information with colleagues	20	28%
6. Other - please specify below	3	4%
Total Responses:	71	

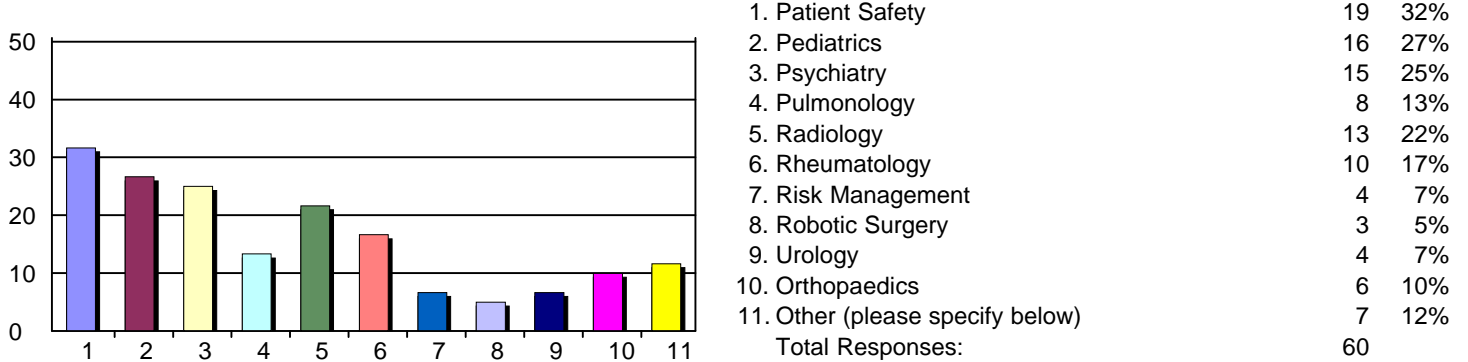
3. What areas of CME would best meet your educational needs?



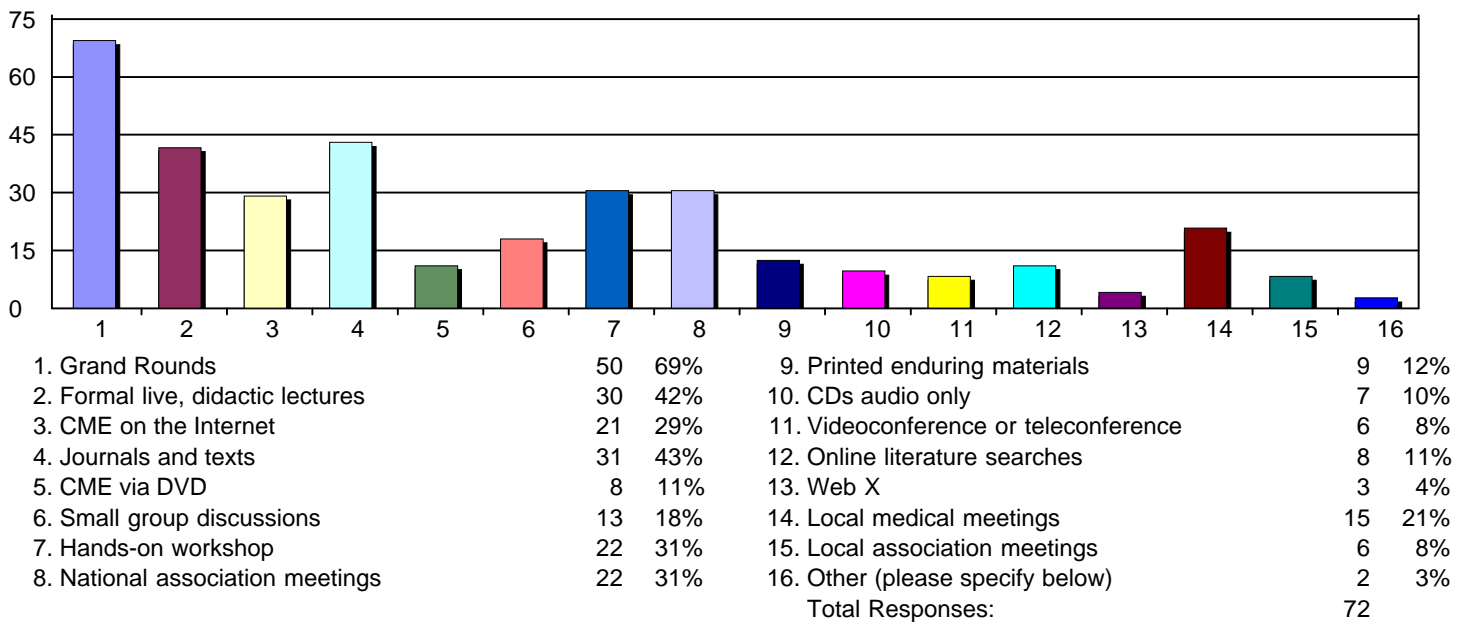
1. ACLS	16	24%	16. Gynecology	7	10%
2. AIDS/HIV	7	10%	17. Hematology	12	18%
3. Allergy & Immunology	6	9%	18. HIPAA/EMTALA	4	6%
4. Asthma	14	21%	19. Infectious Disease	23	34%
5. Cardiology	21	31%	20. Informatics & Technology	2	3%
6. Compliance issues	5	7%	21. Nephrology	12	18%
7. Dementia	10	15%	22. Neonatology	0	0%
8. Diabetes	21	31%	23. Neurology	14	21%
9. Endocrinology	13	19%	24. Nutrition/Diet/Lifestyle	9	13%
10. End of Life Care	7	10%	25. Obstetrics	4	6%
11. Emergency Medicine	10	15%	26. Oncology	16	24%
12. Ethical issues	9	13%	27. Ophthalmology	6	9%
13. Gastroenterology	10	15%	28. Otolaryngology	4	6%
14. Genetics	8	12%	29. Pain Management	16	24%
15. Geriatrics	8	12%	30. PALS	4	6%
			Total Responses:	68	

CME Needs Assessment Summary 2016-2017

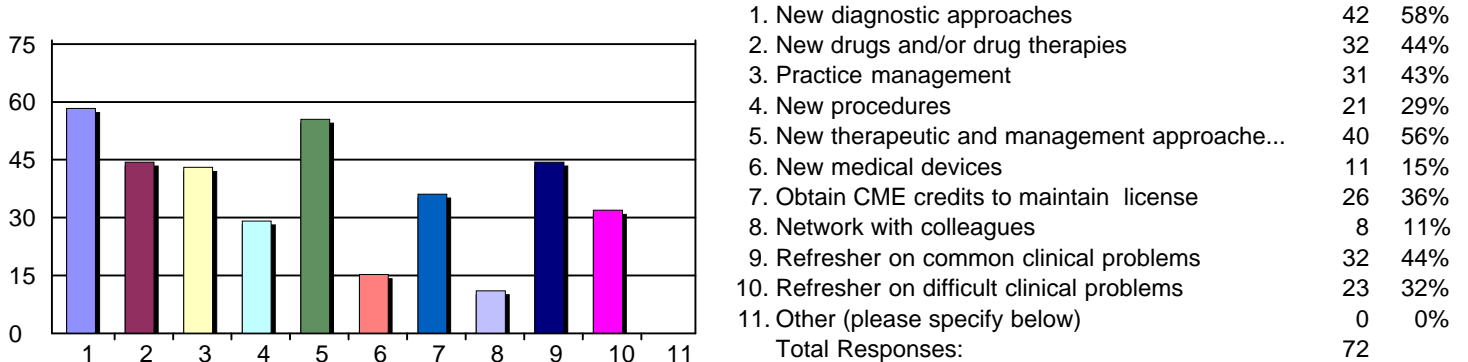
4. Continuing - What areas of CME would best meet your educational needs?



6. What type CME is the most effective in helping you apply CME learning in your clinical practice?

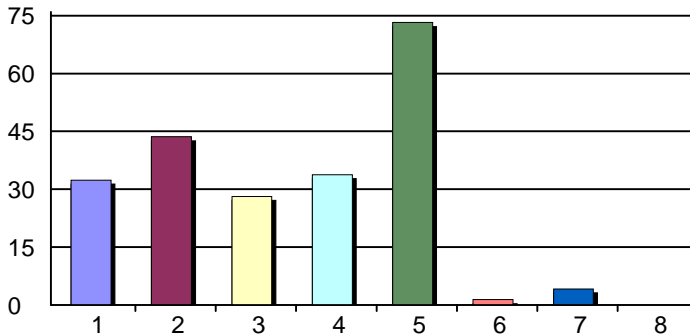


9. Which of these items provide the greatest interest in your selection of CME activities?



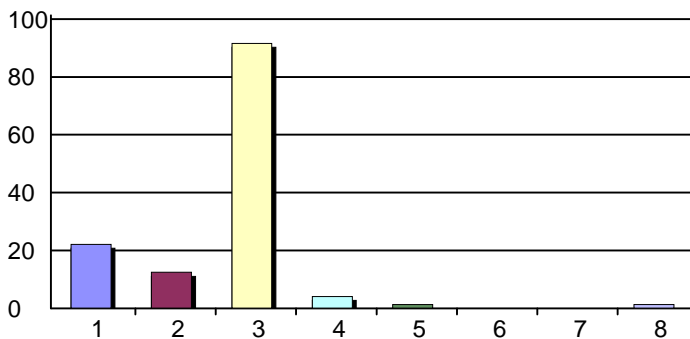
CME Needs Assessment Summary 2016-2017

11. What sources help you identify CME activities?



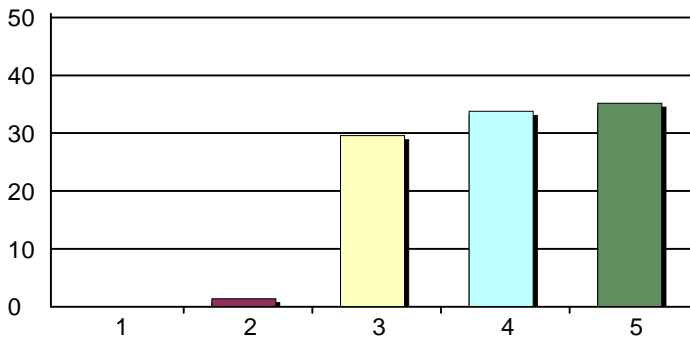
1. Direct mail	23	32%
2. Internet sites	31	44%
3. Information shared with colleagues	20	28%
4. Organizational publications and/or journals	24	34%
5. E-mail messages	52	73%
6. Government publications	1	1%
7. Text messages	3	4%
8. Other (please specify below)	0	0%
Total Responses:	71	

14. What is the best way for CME to communicate with you regarding future CME activities that might be of interest to you?



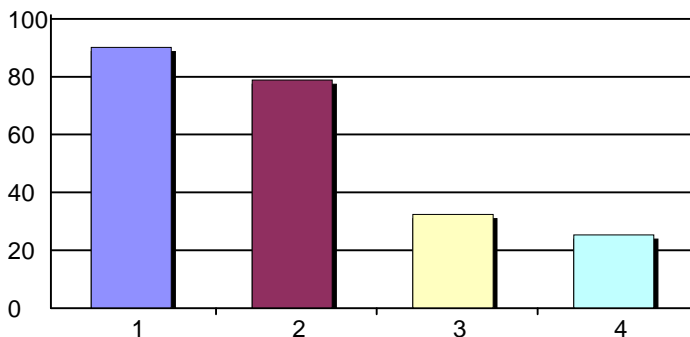
1. Brochure in the mail	16	22%
2. Text message	9	12%
3. E-mail message	66	92%
4. Cell phone	3	4%
5. Office phone	1	1%
6. Twitter	0	0%
7. Facebook	0	0%
8. Other (please specify below)	1	1%
Total Responses:	72	

16. Please indicate your birth year.



1. 1925-1933	0	0%
2. 1934-1946	1	1%
3. 1947-1964	21	30%
4. 1965-1980	24	34%
5. 1981 and beyond	25	35%
Total Responses:	71	
Mean: 4.03	Standard Deviation: 0.84	

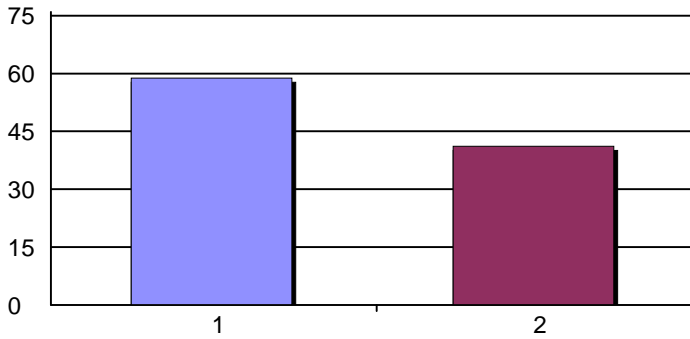
17. Where are you credentialed?



1. Marshall Health	64	90%
2. CHH	56	79%
3. SMMC	23	32%
4. VAMC	18	25%
Total Responses:	71	

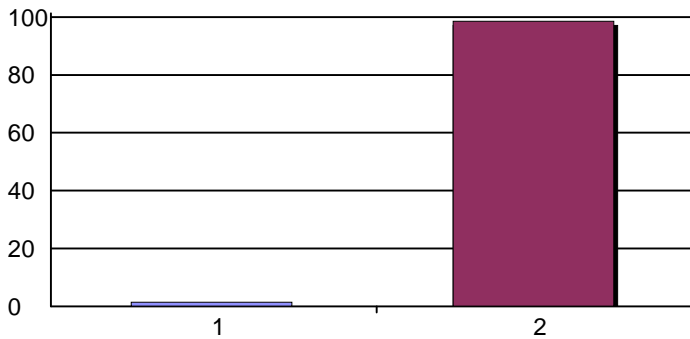
CME Needs Assessment Summary 2016-2017

18. Have you completed a CME Disclosure Form this year?



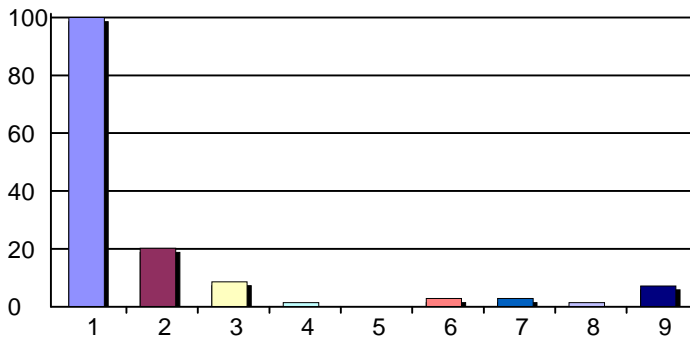
1. Yes 40 59%
 2. No 28 41%
 Total Responses: 68
 Mean: 1.41 Standard Deviation: 0.50

19. Do you have any Conflicts of Interest that would prevent you from participating in planned events?



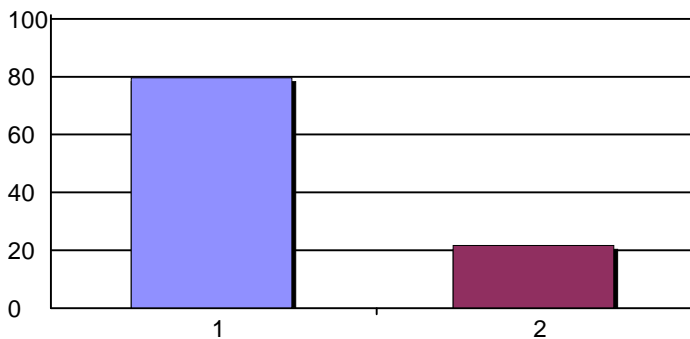
1. Yes 1 1%
 2. No 70 99%
 Total Responses: 71
 Mean: 1.99 Standard Deviation: 0.12

20. Where are you licensed?



1. West Virginia 69 100%
 2. Ohio 14 20%
 3. Kentucky 6 9%
 4. Virginia 1 1%
 5. Maryland 0 0%
 6. Pennsylvania 2 3%
 7. New York 2 3%
 8. North Carolina 1 1%
 9. Other state (please specify below) 5 7%
 Total Responses: 69

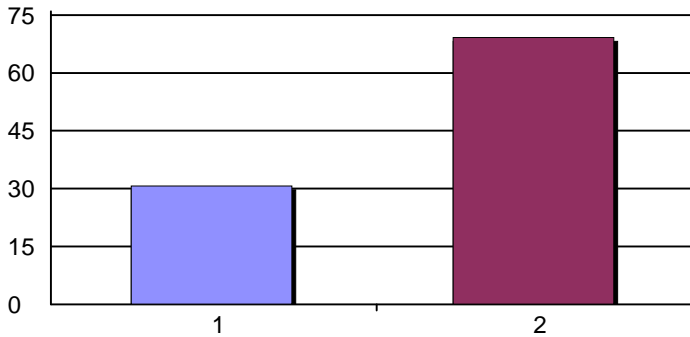
22. Have you completed the 3 hour WV licensure requirement on Drug Diversion or Prescribing of Controlled Substances?



1. Yes 55 80%
 2. NO 15 22%
 Total Responses: 69

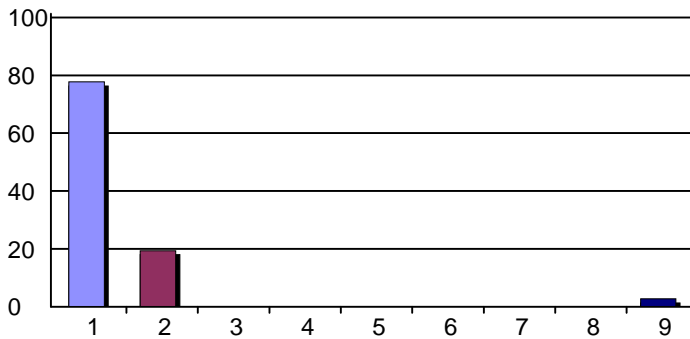
CME Needs Assessment Summary 2016-2017

23. If you answered No. Do you know that the Drug Diversion training is available on the CME website via the link on the Events Calendar? <http://jcesom.marshall.edu/continuing-medical-education/eve>



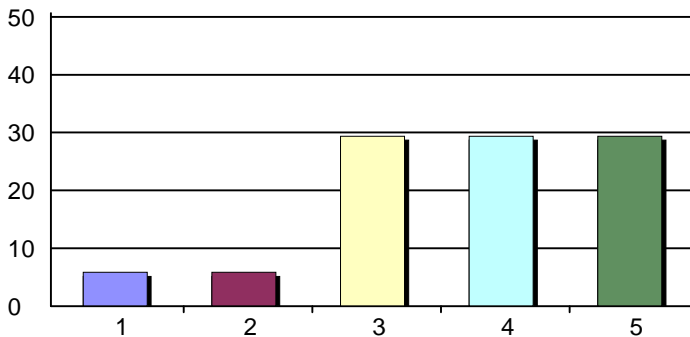
1. Yes	8	31%
2. NO	18	69%
Total Responses:	26	

25. You are a.....



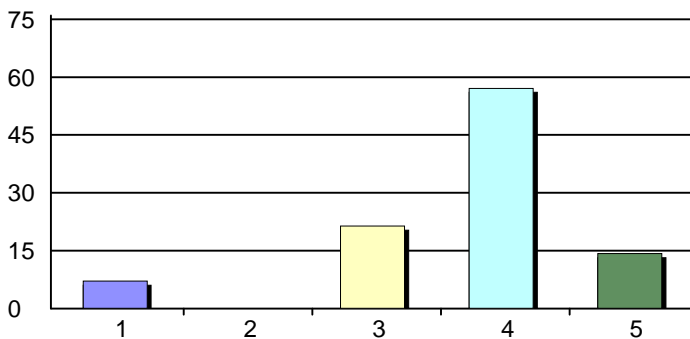
1. Physician	56	78%
2. Resident	14	19%
3. Pharmacist	0	0%
4. Nurse	0	0%
5. Basic Scientist	0	0%
6. Medical Student	0	0%
7. Medical Staff	0	0%
8. Dentist	0	0%
9. Other health professional (please specify below)	2	3%
Total Responses:	72	
Mean: 1.42	Standard Deviation: 1.35	

27. Breast Cancer Conference



1. Very Dissatisfied	1	6%
2. Dissatisfied	1	6%
3. Neutral	5	29%
4. Satisfied	5	29%
5. Very Satisfied	5	29%
Total Responses:	17	

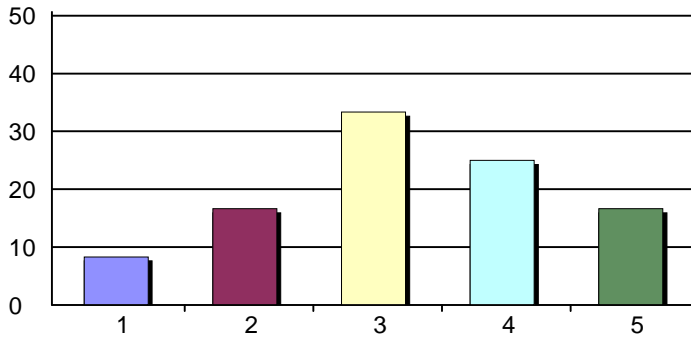
28. Cardiology Basic Science



1. Very Dissatisfied	1	7%
2. Dissatisfied	0	0%
3. Neutral	3	21%
4. Satisfied	8	57%
5. Very Satisfied	2	14%
Total Responses:	14	

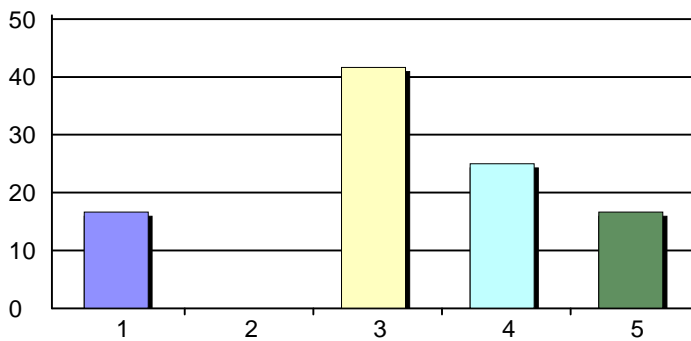
CME Needs Assessment Summary 2016-2017

29. Cardiology Cath



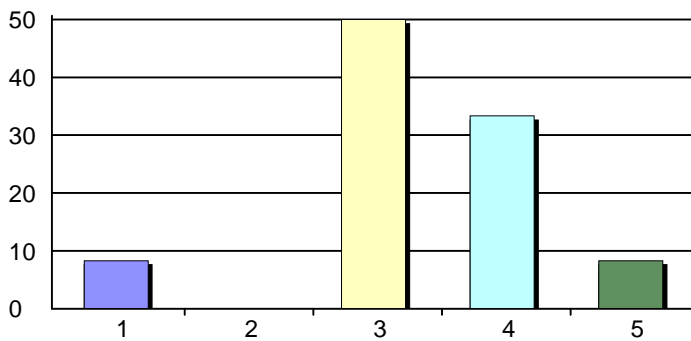
1. Very Dissatisfied	1	8%
2. Dissatisfied	2	17%
3. Neutral	4	33%
4. Satisfied	3	25%
5. Very Satisfied	2	17%
Total Responses:	12	

30. Cardiology Journal



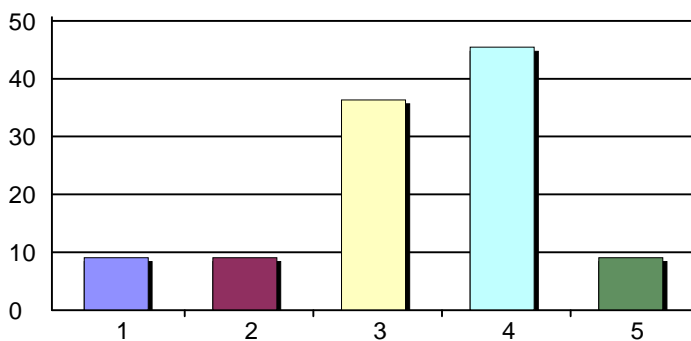
1. Very Dissatisfied	2	17%
2. Dissatisfied	0	0%
3. Neutral	5	42%
4. Satisfied	3	25%
5. Very Satisfied	2	17%
Total Responses:	12	

31. Cardiology Disease M&M/CVT



1. Very Dissatisfied	1	8%
2. Dissatisfied	0	0%
3. Neutral	6	50%
4. Satisfied	4	33%
5. Very Satisfied	1	8%
Total Responses:	12	

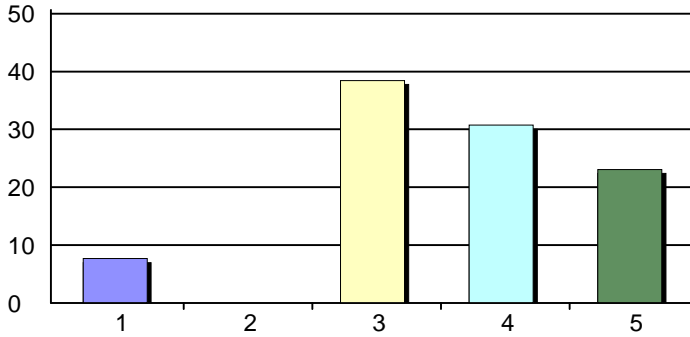
32. Cardiology Nuclear



1. Very Dissatisfied	1	9%
2. Dissatisfied	1	9%
3. Neutral	4	36%
4. Satisfied	5	45%
5. Very Satisfied	1	9%
Total Responses:	11	

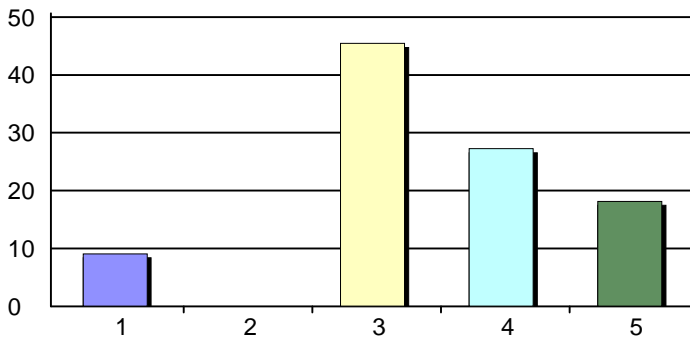
CME Needs Assessment Summary 2016-2017

33. ECCC Med Oncology GR & Core Lectures



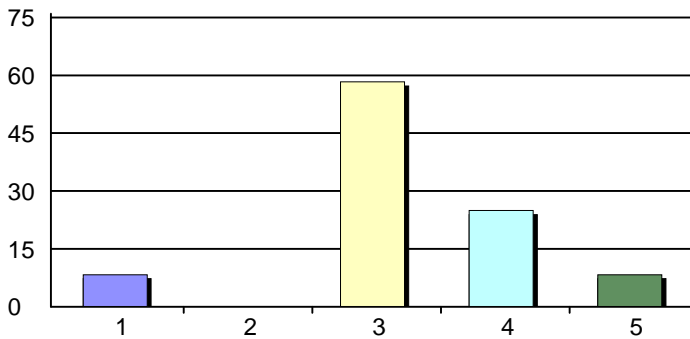
1. Very Dissatisfied	1	8%
2. Dissatisfied	0	0%
3. Neutral	5	38%
4. Satisfied	4	31%
5. Very Satisfied	3	23%
Total Responses:	13	

34. Echo Conference



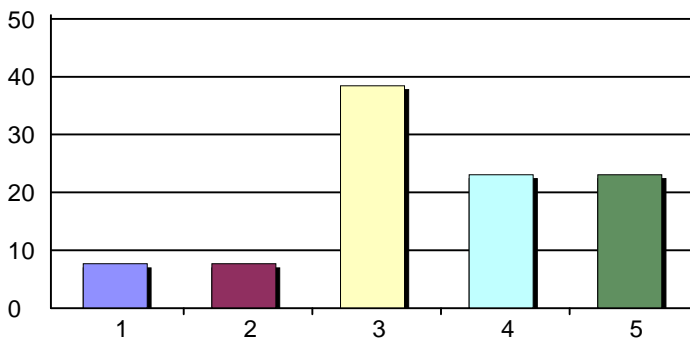
1. Very Dissatisfied	1	9%
2. Dissatisfied	0	0%
3. Neutral	5	45%
4. Satisfied	3	27%
5. Very Satisfied	2	18%
Total Responses:	11	

35. EKG Cardiology Conference



1. Very Dissatisfied	1	8%
2. Dissatisfied	0	0%
3. Neutral	7	58%
4. Satisfied	3	25%
5. Very Satisfied	1	8%
Total Responses:	12	

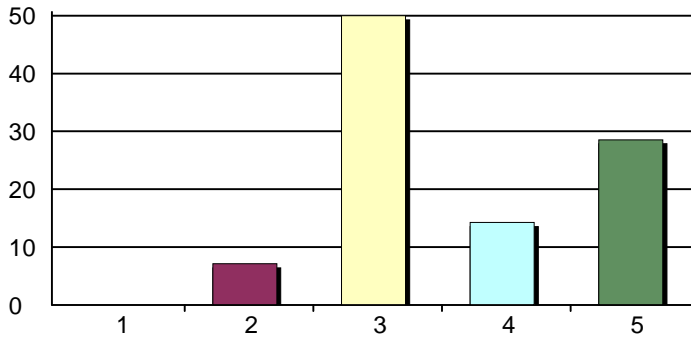
36. Family Practice Grand Rounds



1. Very Dissatisfied	1	8%
2. Dissatisfied	1	8%
3. Neutral	5	38%
4. Satisfied	3	23%
5. Very Satisfied	3	23%
Total Responses:	13	

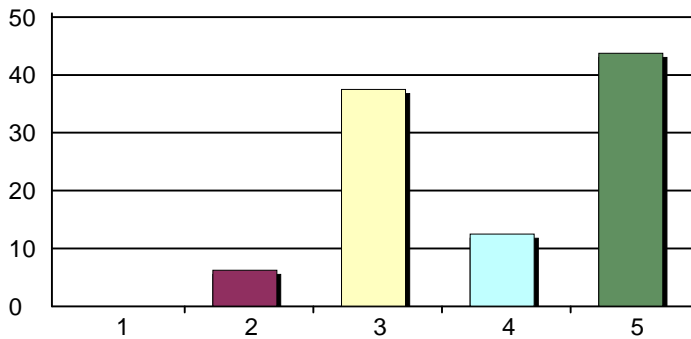
CME Needs Assessment Summary 2016-2017

37. Fetal Anomalies-OB



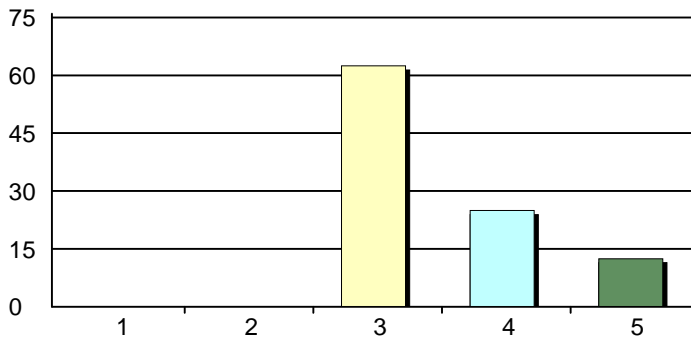
1. Very Dissatisfied	0	0%
2. Dissatisfied	1	7%
3. Neutral	7	50%
4. Satisfied	2	14%
5. Very Satisfied	4	29%
Total Responses:	14	

38. Gynecology Conference M&M



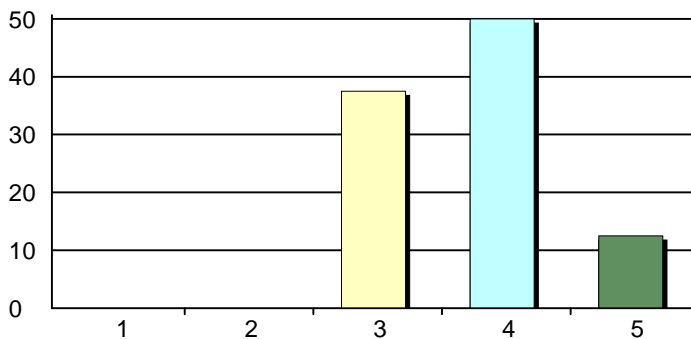
1. Very Dissatisfied	0	0%
2. Dissatisfied	1	6%
3. Neutral	6	38%
4. Satisfied	2	12%
5. Very Satisfied	7	44%
Total Responses:	16	

39. HIMG Noon Conference



1. Very Dissatisfied	0	0%
2. Dissatisfied	0	0%
3. Neutral	5	62%
4. Satisfied	2	25%
5. Very Satisfied	1	12%
Total Responses:	8	

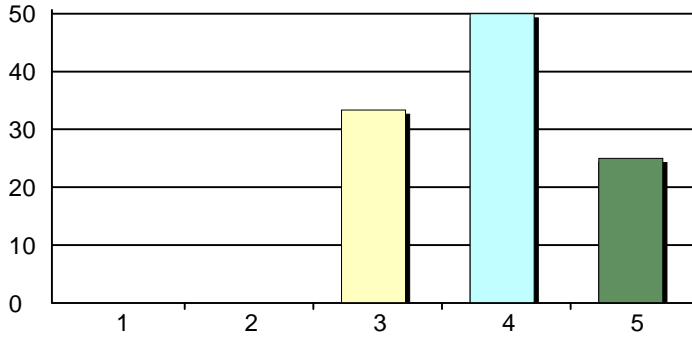
40. Holzer Med Ctr - Marshall Tuesdays



1. Very Dissatisfied	0	0%
2. Dissatisfied	0	0%
3. Neutral	3	38%
4. Satisfied	4	50%
5. Very Satisfied	1	12%
Total Responses:	8	

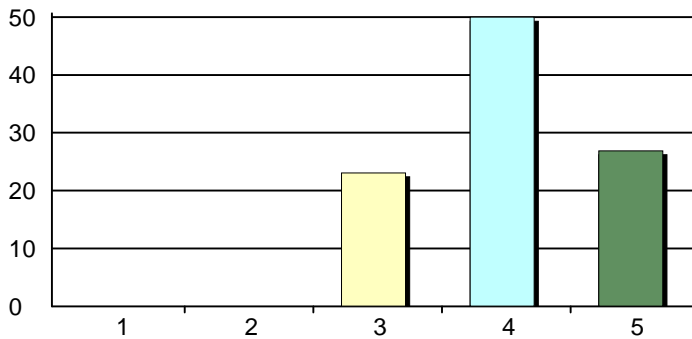
CME Needs Assessment Summary 2016-2017

41. Lung Cancer Conference



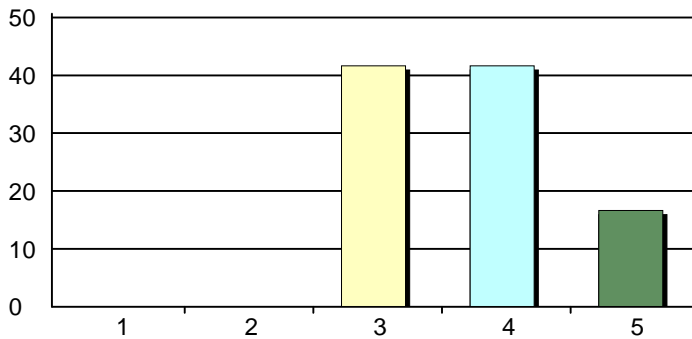
1. Very Dissatisfied	0	0%
2. Dissatisfied	0	0%
3. Neutral	4	33%
4. Satisfied	6	50%
5. Very Satisfied	3	25%
Total Responses:	12	

42. Medical Grand Rounds



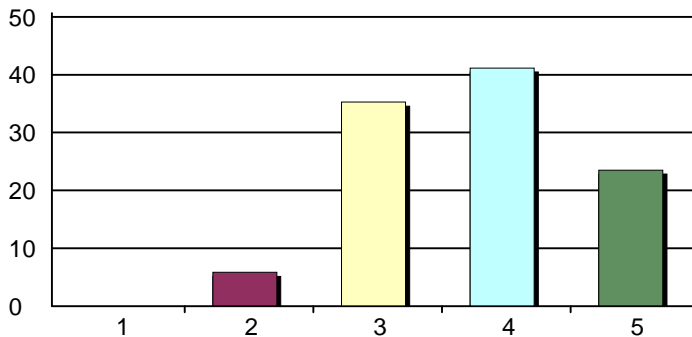
1. Very Dissatisfied	0	0%
2. Dissatisfied	0	0%
3. Neutral	6	23%
4. Satisfied	13	50%
5. Very Satisfied	7	27%
Total Responses:	26	

43. Multi-Institutional Sarcoma Board



1. Very Dissatisfied	0	0%
2. Dissatisfied	0	0%
3. Neutral	5	42%
4. Satisfied	5	42%
5. Very Satisfied	2	17%
Total Responses:	12	

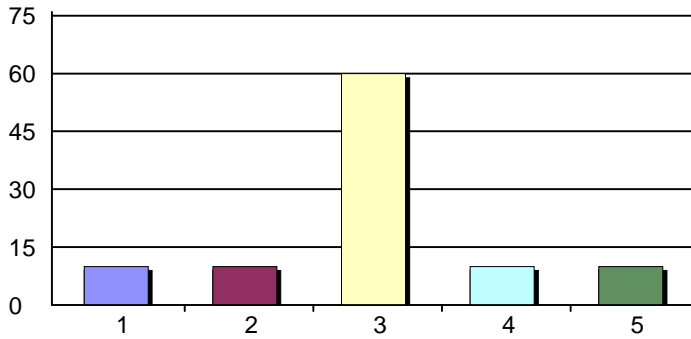
44. Neurology Grand Rounds



1. Very Dissatisfied	0	0%
2. Dissatisfied	1	6%
3. Neutral	6	35%
4. Satisfied	7	41%
5. Very Satisfied	4	24%
Total Responses:	17	

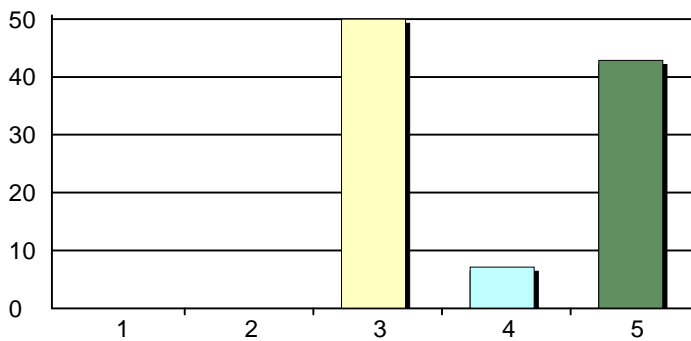
CME Needs Assessment Summary 2016-2017

45. Neuro Surgery



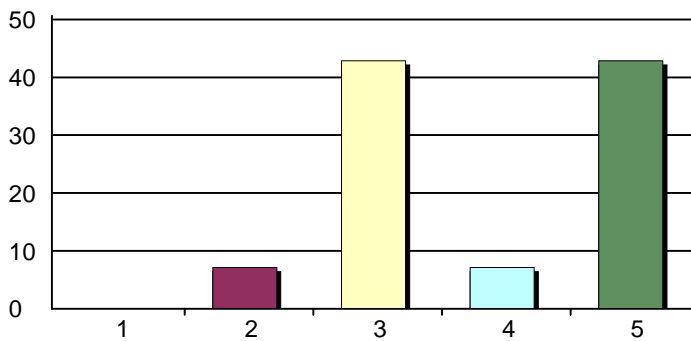
1. Very Dissatisfied	1	10%
2. Dissatisfied	1	10%
3. Neutral	6	60%
4. Satisfied	1	10%
5. Very Satisfied	1	10%
Total Responses:	10	

46. OB/GYN Grand Rounds



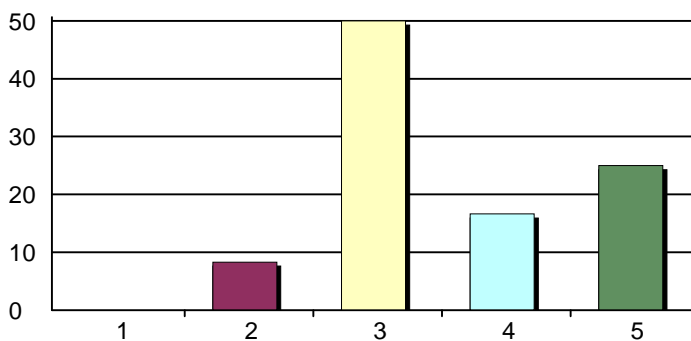
1. Very Dissatisfied	0	0%
2. Dissatisfied	0	0%
3. Neutral	7	50%
4. Satisfied	1	7%
5. Very Satisfied	6	43%
Total Responses:	14	

47. OB/GYN M&M Perinatal



1. Very Dissatisfied	0	0%
2. Dissatisfied	1	7%
3. Neutral	6	43%
4. Satisfied	1	7%
5. Very Satisfied	6	43%
Total Responses:	14	

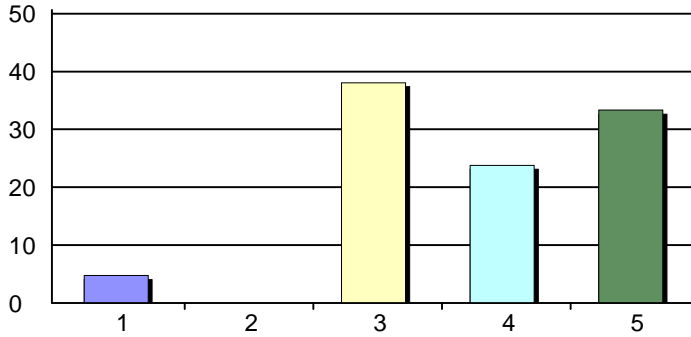
48. Orthopaedics Grand Rounds



1. Very Dissatisfied	0	0%
2. Dissatisfied	1	8%
3. Neutral	6	50%
4. Satisfied	2	17%
5. Very Satisfied	3	25%
Total Responses:	12	

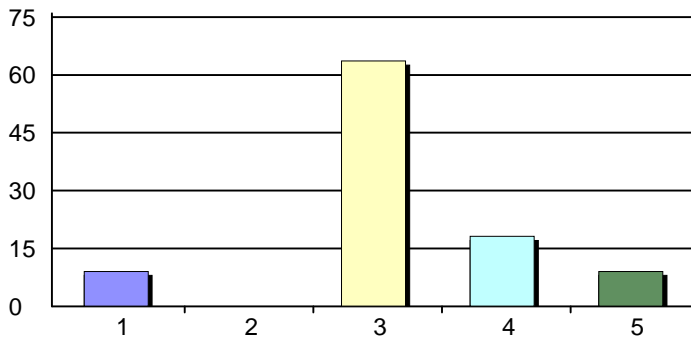
CME Needs Assessment Summary 2016-2017

49. Pediatric Grand Rounds



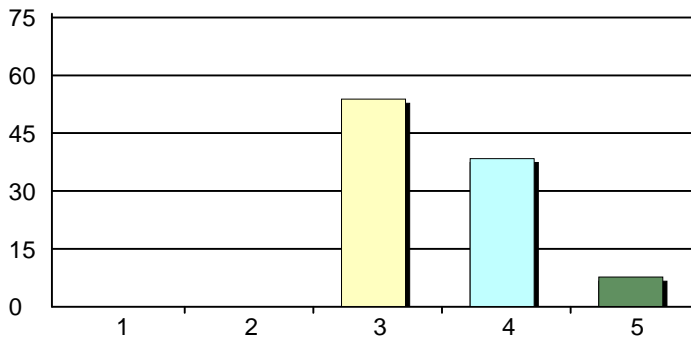
1. Very Dissatisfied	1	5%
2. Dissatisfied	0	0%
3. Neutral	8	38%
4. Satisfied	5	24%
5. Very Satisfied	7	33%
Total Responses:	21	

50. Pediatric Journal Club



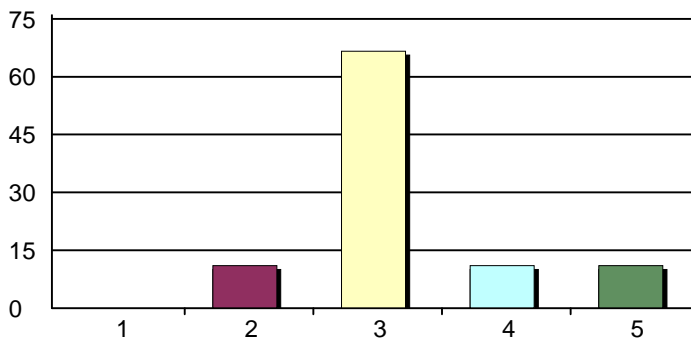
1. Very Dissatisfied	1	9%
2. Dissatisfied	0	0%
3. Neutral	7	64%
4. Satisfied	2	18%
5. Very Satisfied	1	9%
Total Responses:	11	

51. Pediatric Residents Lecture



1. Very Dissatisfied	0	0%
2. Dissatisfied	0	0%
3. Neutral	7	54%
4. Satisfied	5	38%
5. Very Satisfied	1	8%
Total Responses:	13	

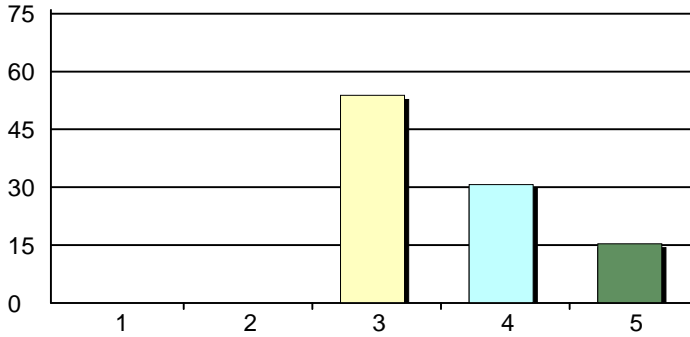
52. Professional Practice Review (CHH)



1. Very Dissatisfied	0	0%
2. Dissatisfied	1	11%
3. Neutral	6	67%
4. Satisfied	1	11%
5. Very Satisfied	1	11%
Total Responses:	9	

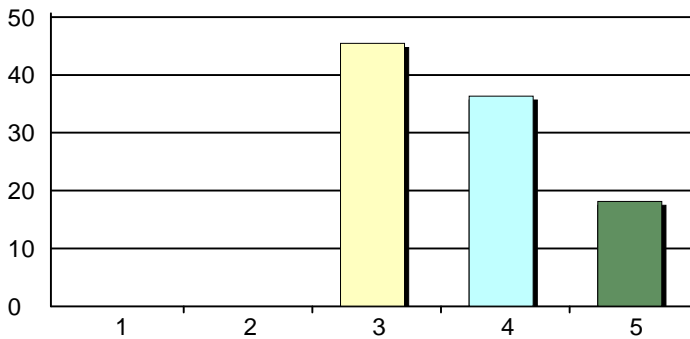
CME Needs Assessment Summary 2016-2017

53. Psychiatry Grand Rounds



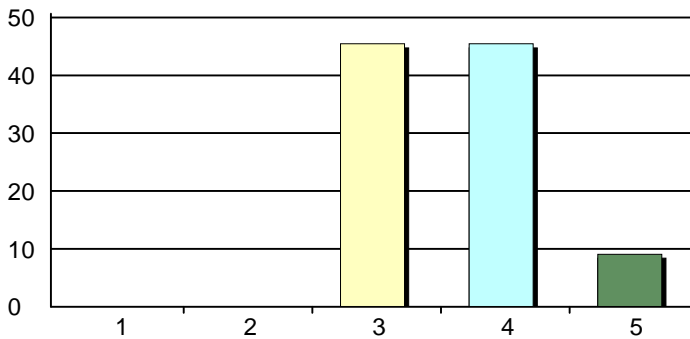
1. Very Dissatisfied	0	0%
2. Dissatisfied	0	0%
3. Neutral	7	54%
4. Satisfied	4	31%
5. Very Satisfied	2	15%
Total Responses:	13	

54. Pulmonary Conference



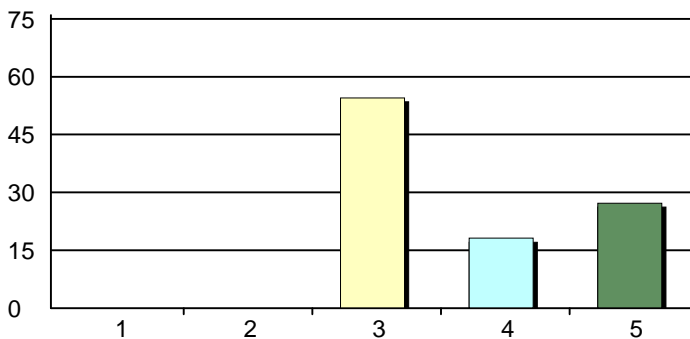
1. Very Dissatisfied	0	0%
2. Dissatisfied	0	0%
3. Neutral	5	45%
4. Satisfied	4	36%
5. Very Satisfied	2	18%
Total Responses:	11	

55. Pulmonary Journal Club



1. Very Dissatisfied	0	0%
2. Dissatisfied	0	0%
3. Neutral	5	45%
4. Satisfied	5	45%
5. Very Satisfied	1	9%
Total Responses:	11	

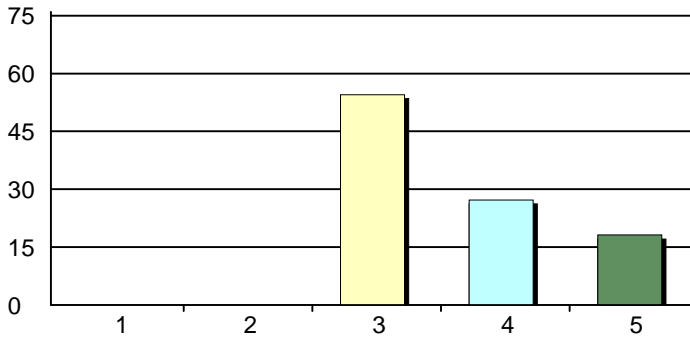
56. Pulmonary Pathology



1. Very Dissatisfied	0	0%
2. Dissatisfied	0	0%
3. Neutral	6	55%
4. Satisfied	2	18%
5. Very Satisfied	3	27%
Total Responses:	11	

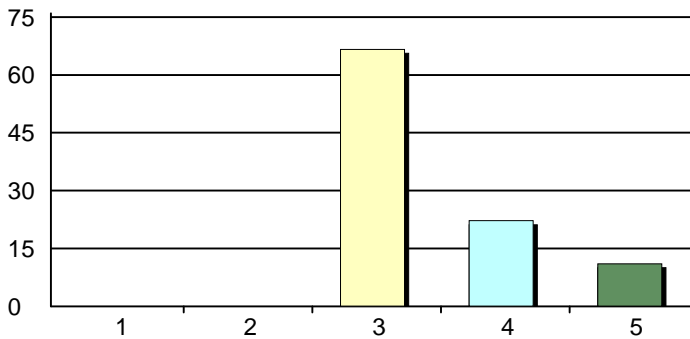
CME Needs Assessment Summary 2016-2017

57. Pulmonary Research



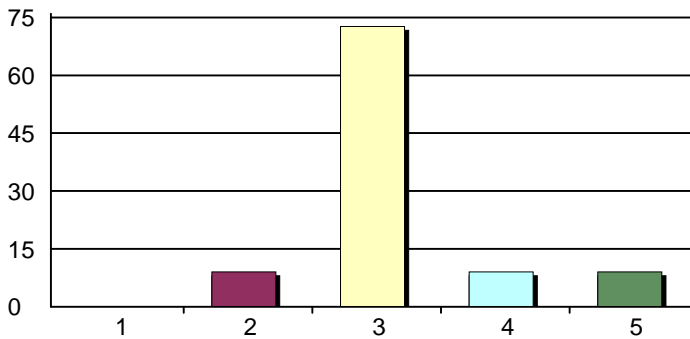
1. Very Dissatisfied	0	0%
2. Dissatisfied	0	0%
3. Neutral	6	55%
4. Satisfied	3	27%
5. Very Satisfied	2	18%
Total Responses:	11	

58. Radiology Conference



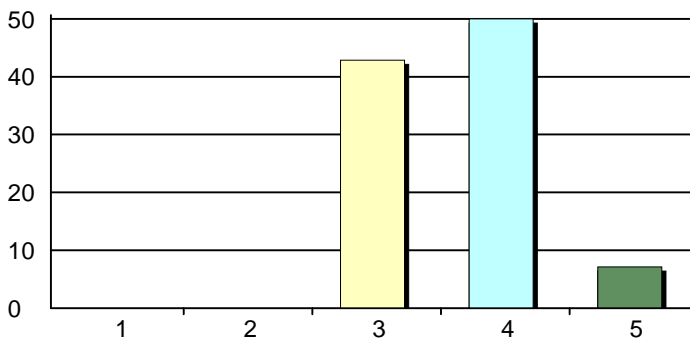
1. Very Dissatisfied	0	0%
2. Dissatisfied	0	0%
3. Neutral	6	67%
4. Satisfied	2	22%
5. Very Satisfied	1	11%
Total Responses:	9	

59. Spine/Neuroscience



1. Very Dissatisfied	0	0%
2. Dissatisfied	1	9%
3. Neutral	8	73%
4. Satisfied	1	9%
5. Very Satisfied	1	9%
Total Responses:	11	

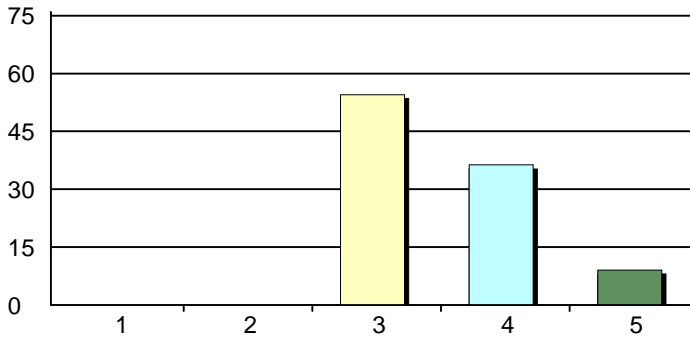
60. Surgical Grand Rounds



1. Very Dissatisfied	0	0%
2. Dissatisfied	0	0%
3. Neutral	6	43%
4. Satisfied	7	50%
5. Very Satisfied	1	7%
Total Responses:	14	

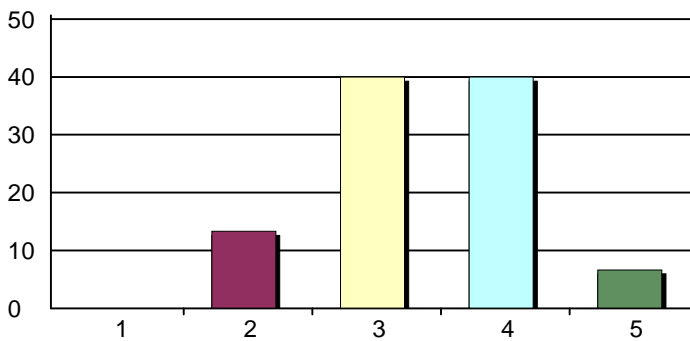
CME Needs Assessment Summary 2016-2017

65. Surgical Trauma



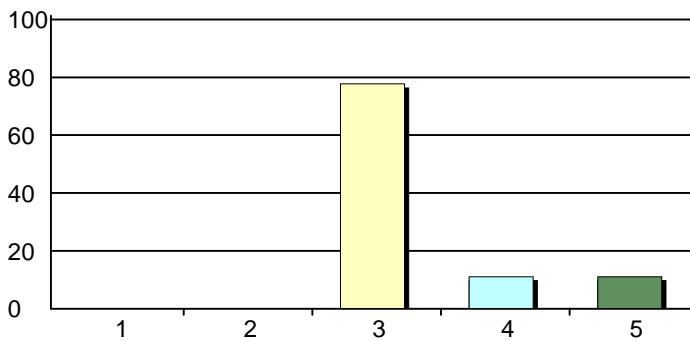
1. Very Dissatisfied	0	0%
2. Dissatisfied	0	0%
3. Neutral	6	55%
4. Satisfied	4	36%
5. Very Satisfied	1	9%
Total Responses:	11	

66. Surgical M&M



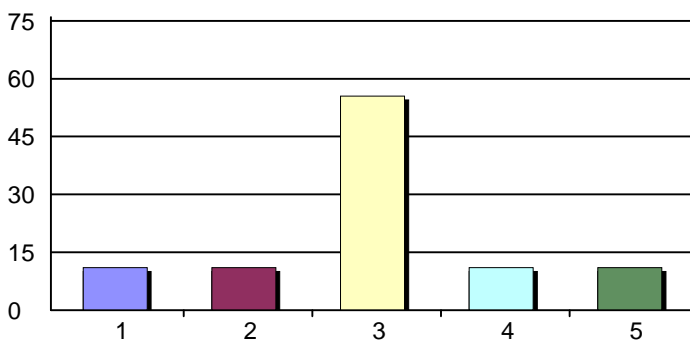
1. Very Dissatisfied	0	0%
2. Dissatisfied	2	13%
3. Neutral	6	40%
4. Satisfied	6	40%
5. Very Satisfied	1	7%
Total Responses:	15	

67. Surgical Rounds (VAMC)



1. Very Dissatisfied	0	0%
2. Dissatisfied	0	0%
3. Neutral	7	78%
4. Satisfied	1	11%
5. Very Satisfied	1	11%
Total Responses:	9	

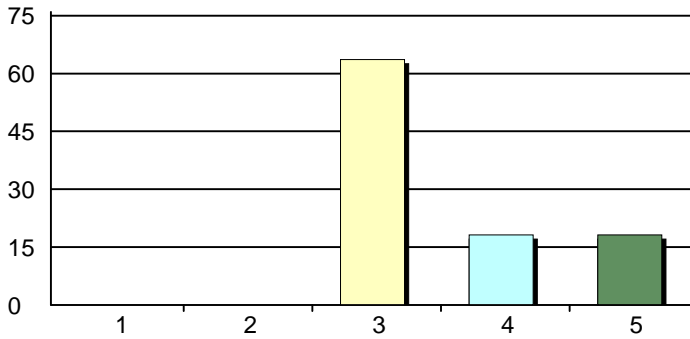
68. Tobacco Cessation (Outreach)



1. Very Dissatisfied	1	11%
2. Dissatisfied	1	11%
3. Neutral	5	56%
4. Satisfied	1	11%
5. Very Satisfied	1	11%
Total Responses:	9	

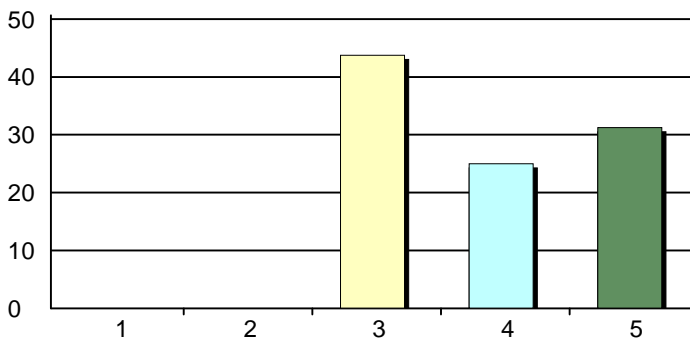
CME Needs Assessment Summary 2016-2017

69. Tri-State Endocrinology Society



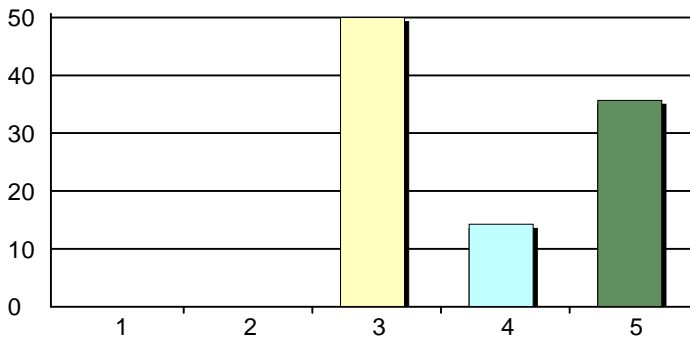
1. Very Dissatisfied	0	0%
2. Dissatisfied	0	0%
3. Neutral	7	64%
4. Satisfied	2	18%
5. Very Satisfied	2	18%
Total Responses:	11	

70. Tumor CHH



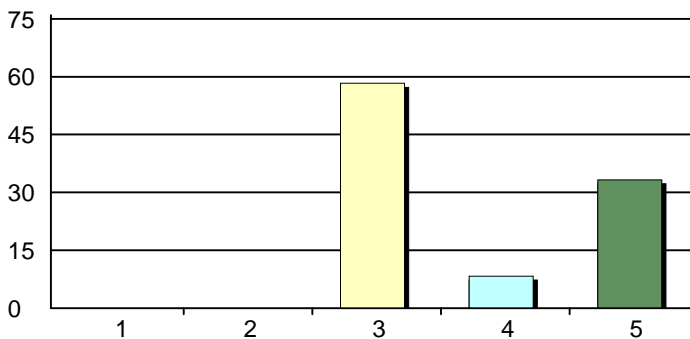
1. Very Dissatisfied	0	0%
2. Dissatisfied	0	0%
3. Neutral	7	44%
4. Satisfied	4	25%
5. Very Satisfied	5	31%
Total Responses:	16	

71. Tumor CHH-Breast



1. Very Dissatisfied	0	0%
2. Dissatisfied	0	0%
3. Neutral	7	50%
4. Satisfied	2	14%
5. Very Satisfied	5	36%
Total Responses:	14	

72. Tumor CHH-Lung



1. Very Dissatisfied	0	0%
2. Dissatisfied	0	0%
3. Neutral	7	58%
4. Satisfied	1	8%
5. Very Satisfied	4	33%
Total Responses:	12	

CME Needs Assessment Summary 2016-2017

77. Risk Management

