

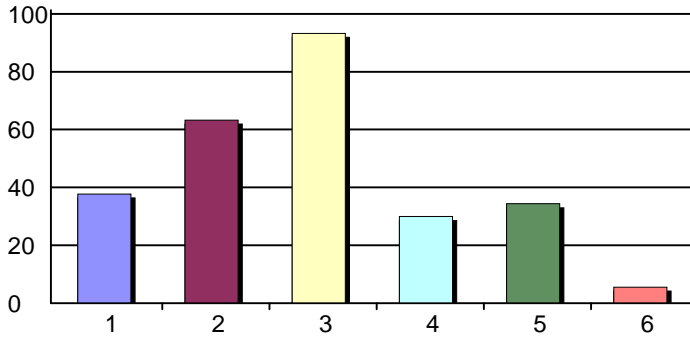
CME Needs Assessment Summary 2015

Creation Date: 1/11/2017

Time Interval: 8/24/2015 to 12/24/2015

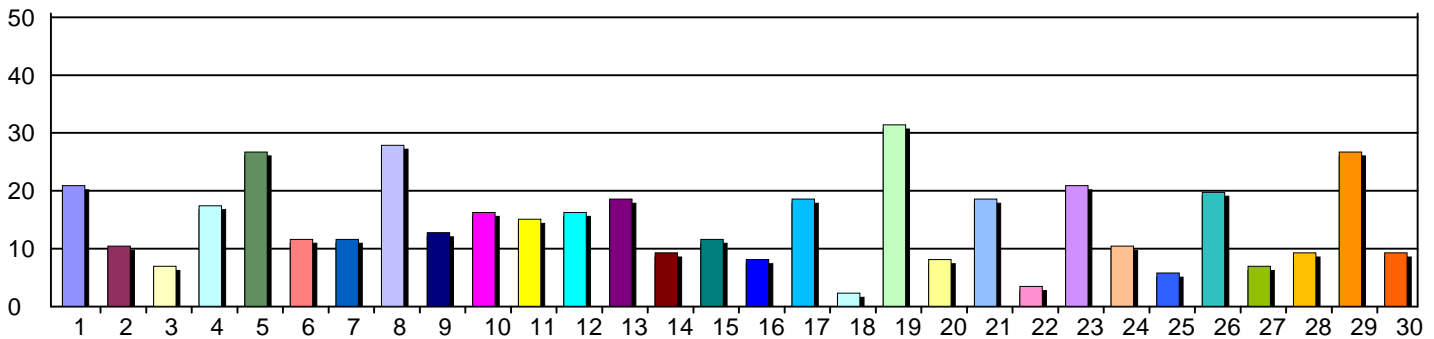
Total Respondents: 95

1. How do you utilize CME?



1. Provide information to patients	34	38%
2. Put new knowledge into practice	57	63%
3. To stay up-to-date	84	93%
4. Better understand indications/contraindicat...	27	30%
5. Share the information with colleagues	31	34%
6. Other - please specify below	5	6%
Total Responses:	90	

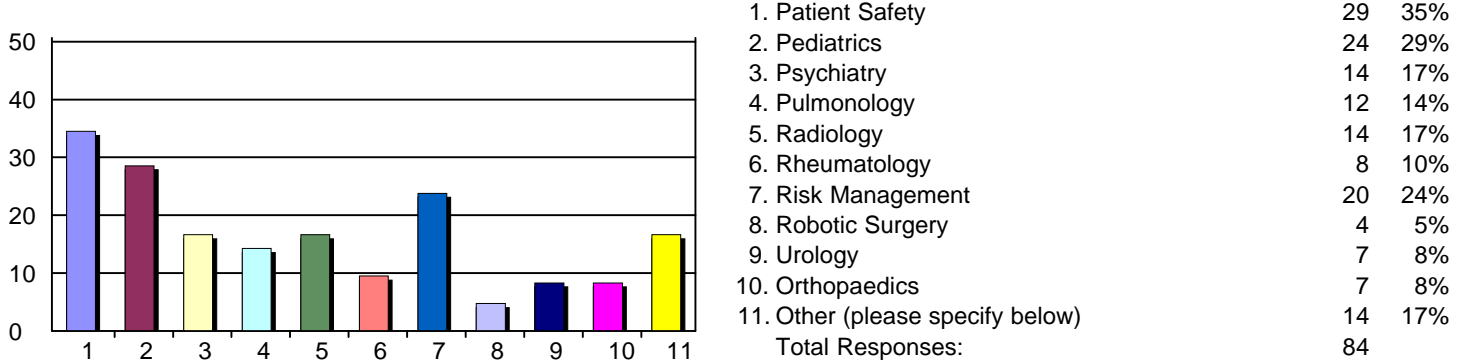
3. What areas of CME would best meet your educational needs?



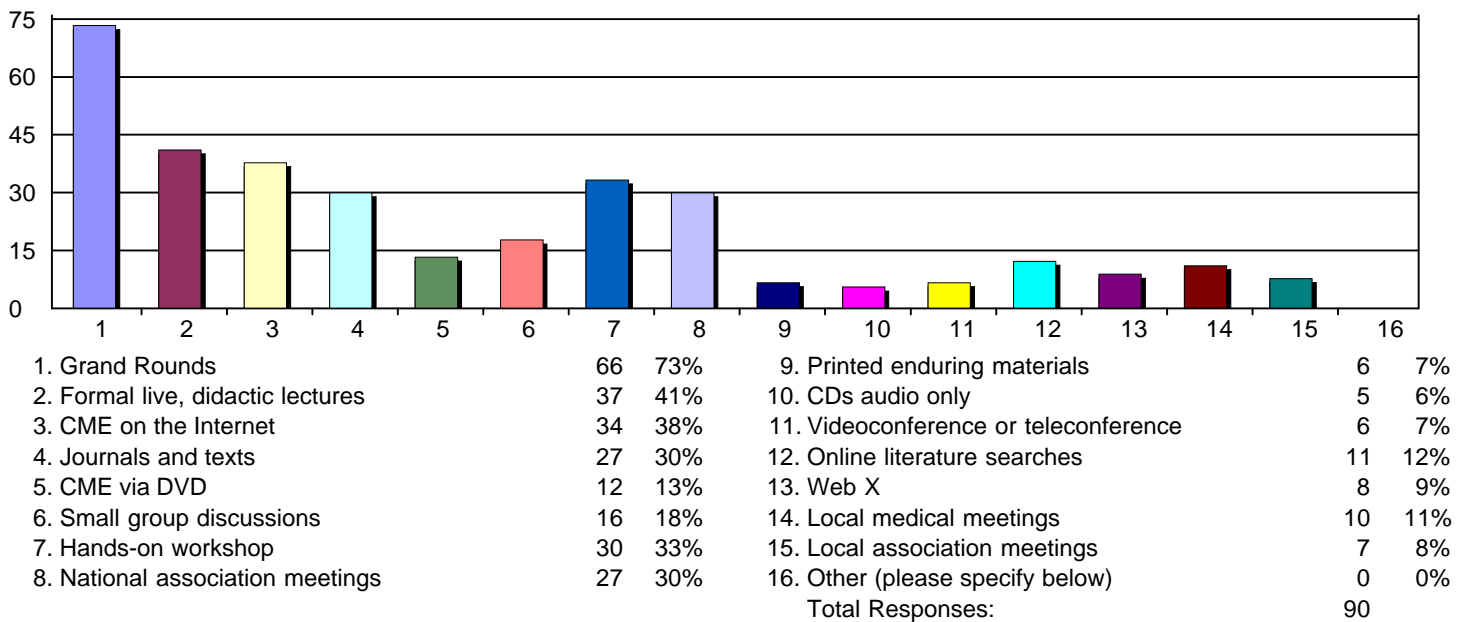
1. ACLS	18	21%	16. Gynecology	7	8%
2. AIDS/HIV	9	10%	17. Hematology	16	19%
3. Allergy & Immunology	6	7%	18. HIPAA/EMTALA	2	2%
4. Asthma	15	17%	19. Infectious Disease	27	31%
5. Cardiology	23	27%	20. Informatics & Technology	7	8%
6. Compliance issues	10	12%	21. Nephrology	16	19%
7. Dementia	10	12%	22. Neonatology	3	3%
8. Diabetes	24	28%	23. Neurology	18	21%
9. Endocrinology	11	13%	24. Nutrition/Diet/Lifestyle	9	10%
10. End of Life Care	14	16%	25. Obstetrics	5	6%
11. Emergency Medicine	13	15%	26. Oncology	17	20%
12. Ethical issues	14	16%	27. Ophthalmology	6	7%
13. Gastroenterology	16	19%	28. Otolaryngology	8	9%
14. Genetics	8	9%	29. Pain Management	23	27%
15. Geriatrics	10	12%	30. PALS	8	9%
			Total Responses:	86	

CME Needs Assessment Summary 2015

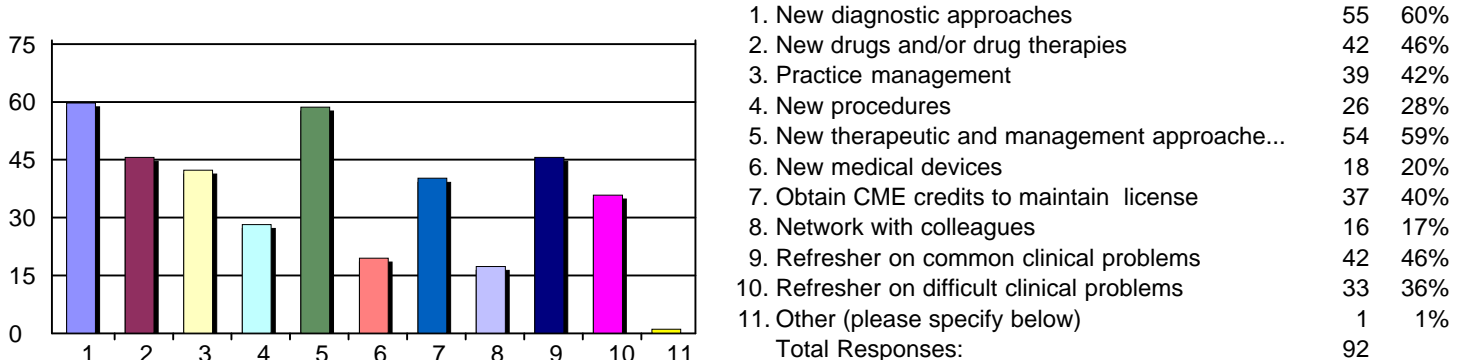
4. Continuing - What areas of CME would best meet your educational needs?



6. What type CME is the most effective in helping you apply CME learning in your clinical practice?

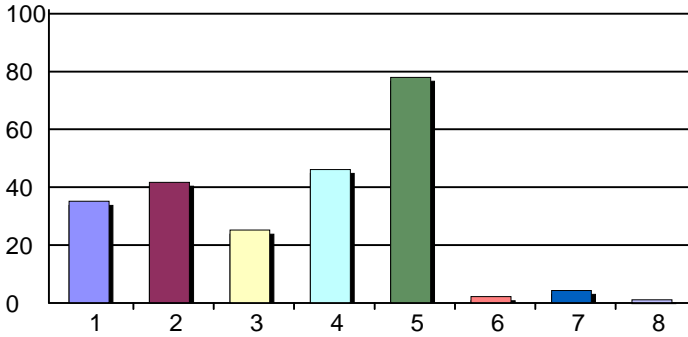


9. Which of these items provide the greatest interest in your selection of CME activities?



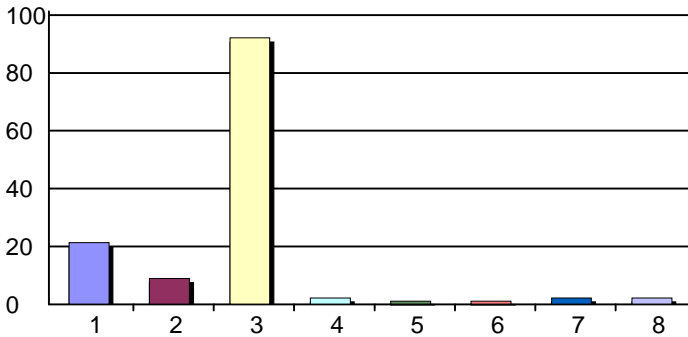
CME Needs Assessment Summary 2015

11. What sources help you identify CME activities?



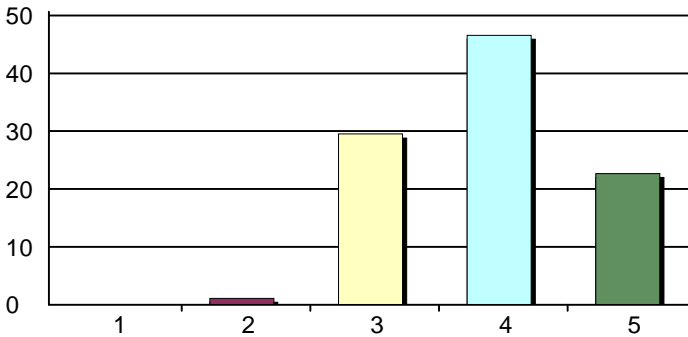
1. Direct mail	32	35%
2. Internet sites	38	42%
3. Information shared with colleagues	23	25%
4. Organizational publications and/or journals	42	46%
5. E-mail messages	71	78%
6. Government publications	2	2%
7. Text messages	4	4%
8. Other (please specify below)	1	1%
Total Responses:	91	

14. What is the best way for CME to communicate with you regarding future CME activities that might be of interest to you?



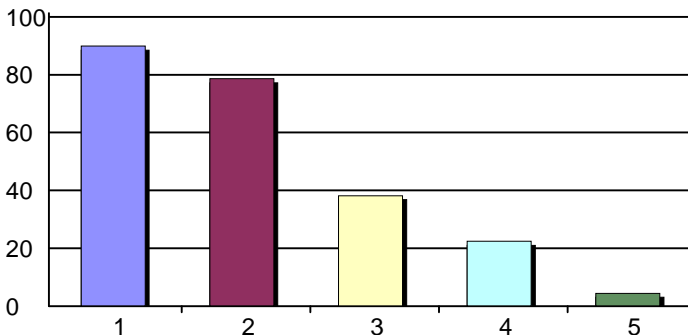
1. Brochure in the mail	19	21%
2. Text message	8	9%
3. E-mail message	82	92%
4. Cell phone	2	2%
5. Office phone	1	1%
6. Twitter	1	1%
7. Facebook	2	2%
8. Other (please specify below)	2	2%
Total Responses:	89	

16. Please indicate your birth year.



1. 1925-1933	0	0%
2. 1934-1946	1	1%
3. 1947-1964	26	30%
4. 1965-1980	41	47%
5. 1981 and beyond	20	23%
Total Responses:	88	
Mean: 3.91	Standard Deviation: 0.75	

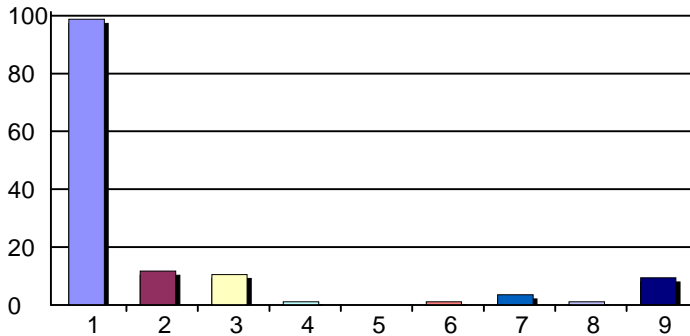
17. Where are you credentialed?



1. Marshall Health	80	90%
2. CHH	70	79%
3. SMMC	34	38%
4. VAMC	20	22%
5. Other (please specify below)	4	4%
Total Responses:	89	

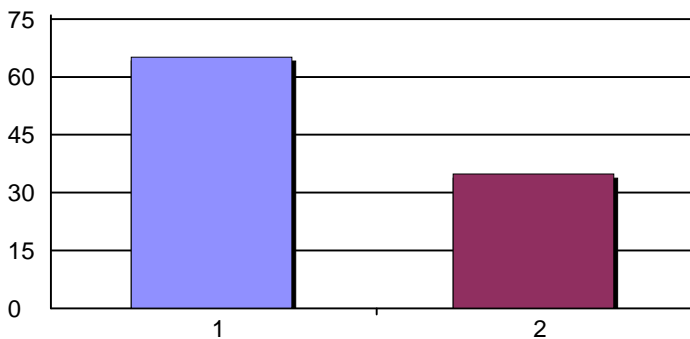
CME Needs Assessment Summary 2015

19. Where are you licensed?



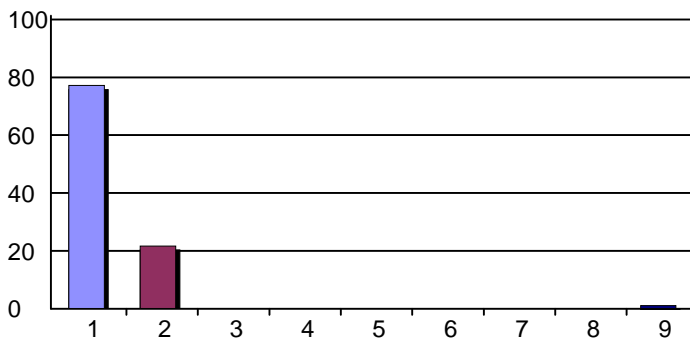
1. West Virginia	84	99%
2. Ohio	10	12%
3. Kentucky	9	11%
4. Virginia	1	1%
5. Maryland	0	0%
6. Pennsylvania	1	1%
7. New York	3	4%
8. North Carolina	1	1%
9. Other state (please specify below)	8	9%
Total Responses:	85	

21. Have you completed the 3 hour WV licensure requirement on Drug Diversion or Prescribing of Controlled Substances?



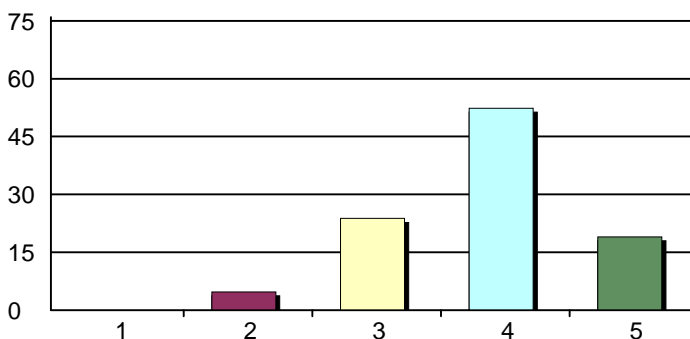
1. Yes	58	65%
2. NO	31	35%
Total Responses:	89	

24. You are a.....



1. Physician	71	77%
2. Resident	20	22%
3. Pharmacist	0	0%
4. Nurse	0	0%
5. Basic Scientist	0	0%
6. Medical Student	0	0%
7. Medical Staff	0	0%
8. Dentist	0	0%
9. Other health professional (please specify below)	1	1%
Total Responses:	92	
Mean: 1.30	Standard Deviation: 0.91	

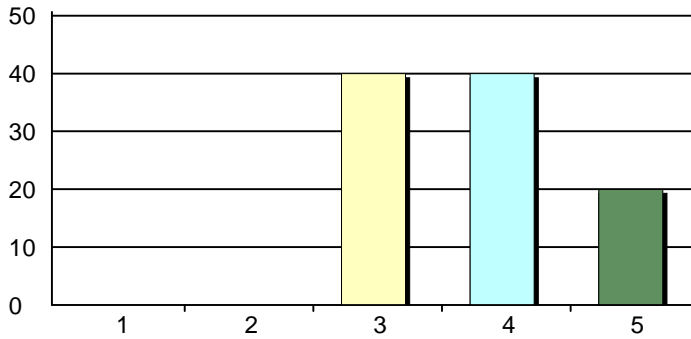
26. Breast Cancer Conference



1. Very Dissatisfied	0	0%
2. Dissatisfied	1	5%
3. Neutral	5	24%
4. Satisfied	11	52%
5. Very Satisfied	4	19%
Total Responses:	21	

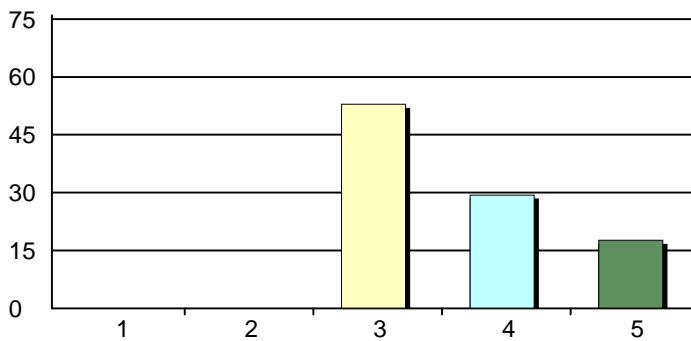
CME Needs Assessment Summary 2015

27. Cardiology Basic Science



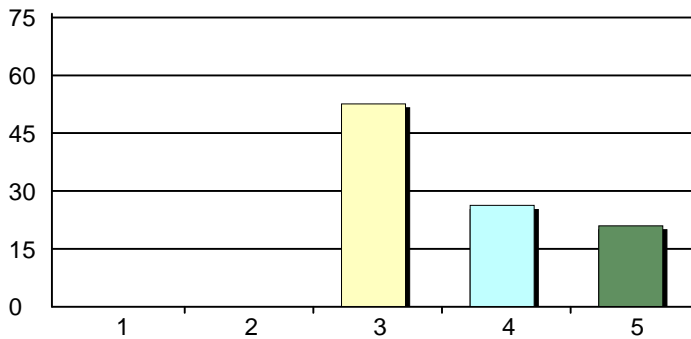
1. Very Dissatisfied	0	0%
2. Dissatisfied	0	0%
3. Neutral	8	40%
4. Satisfied	8	40%
5. Very Satisfied	4	20%
Total Responses:	20	

28. Cardiology Cath



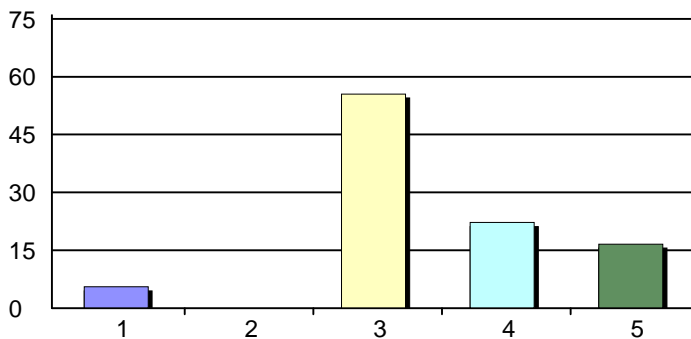
1. Very Dissatisfied	0	0%
2. Dissatisfied	0	0%
3. Neutral	9	53%
4. Satisfied	5	29%
5. Very Satisfied	3	18%
Total Responses:	17	

29. Cardiology Journal



1. Very Dissatisfied	0	0%
2. Dissatisfied	0	0%
3. Neutral	10	53%
4. Satisfied	5	26%
5. Very Satisfied	4	21%
Total Responses:	19	

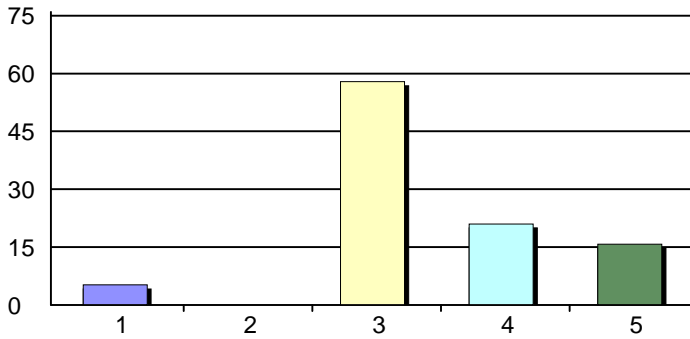
30. Cardiology Disease M&M/CVT



1. Very Dissatisfied	1	6%
2. Dissatisfied	0	0%
3. Neutral	10	56%
4. Satisfied	4	22%
5. Very Satisfied	3	17%
Total Responses:	18	

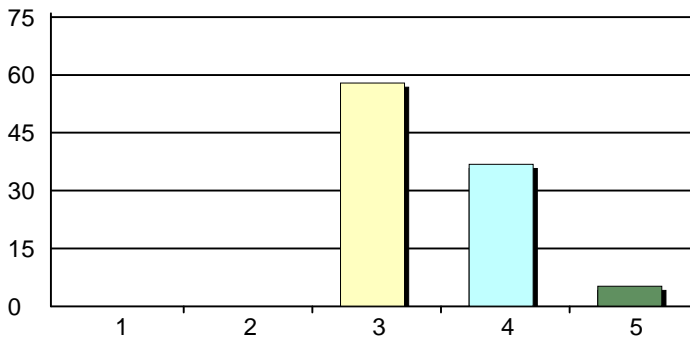
CME Needs Assessment Summary 2015

31. Cardiology Nuclear



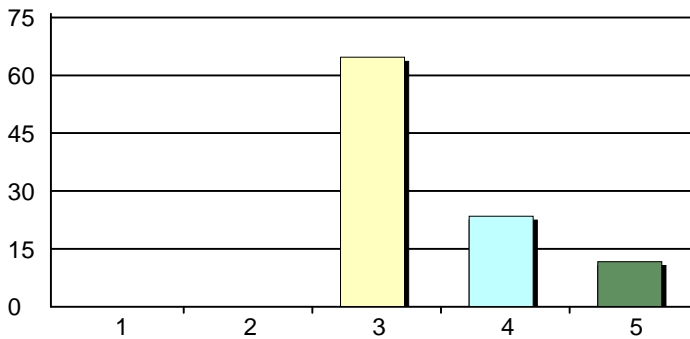
1. Very Dissatisfied	1	5%
2. Dissatisfied	0	0%
3. Neutral	11	58%
4. Satisfied	4	21%
5. Very Satisfied	3	16%
Total Responses:	19	

32. ECCC Med Oncology GR & Core Lectures



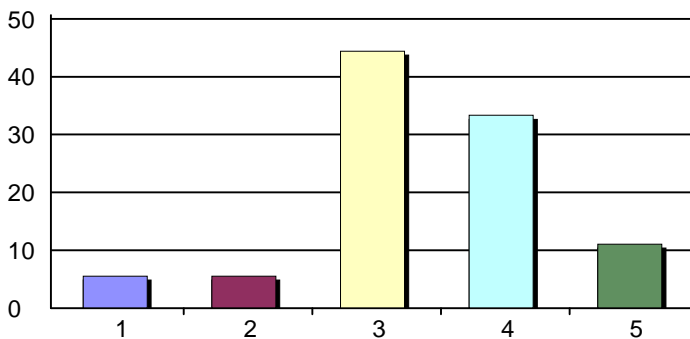
1. Very Dissatisfied	0	0%
2. Dissatisfied	0	0%
3. Neutral	11	58%
4. Satisfied	7	37%
5. Very Satisfied	1	5%
Total Responses:	19	

33. Echo Conference



1. Very Dissatisfied	0	0%
2. Dissatisfied	0	0%
3. Neutral	11	65%
4. Satisfied	4	24%
5. Very Satisfied	2	12%
Total Responses:	17	

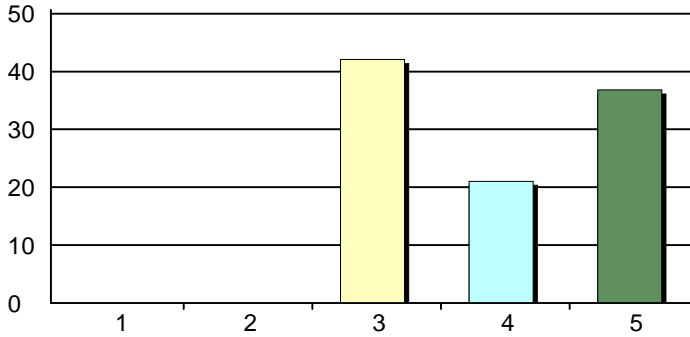
34. EKG Cardiology Conference



1. Very Dissatisfied	1	6%
2. Dissatisfied	1	6%
3. Neutral	8	44%
4. Satisfied	6	33%
5. Very Satisfied	2	11%
Total Responses:	18	

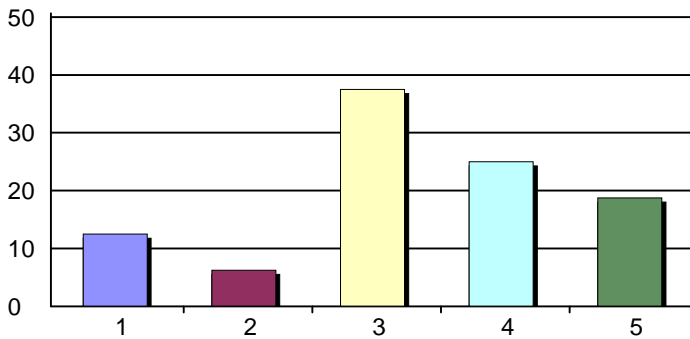
CME Needs Assessment Summary 2015

35. Family Practice Grand Rounds



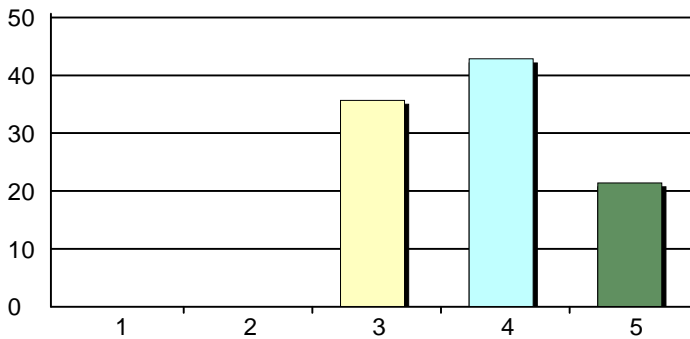
1. Very Dissatisfied	0	0%
2. Dissatisfied	0	0%
3. Neutral	8	42%
4. Satisfied	4	21%
5. Very Satisfied	7	37%
Total Responses:	19	

36. Fetal Anomalies-OB



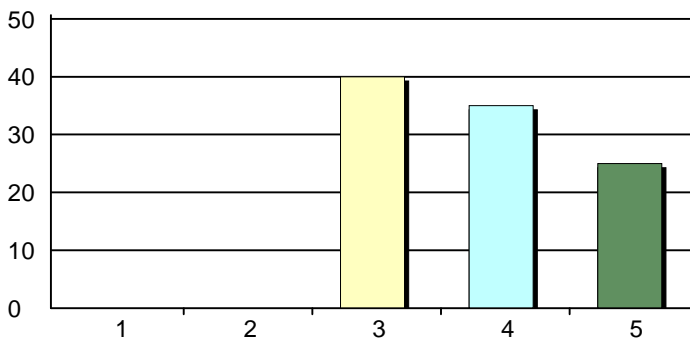
1. Very Dissatisfied	2	12%
2. Dissatisfied	1	6%
3. Neutral	6	38%
4. Satisfied	4	25%
5. Very Satisfied	3	19%
Total Responses:	16	

37. Gynecology Conference M&M



1. Very Dissatisfied	0	0%
2. Dissatisfied	0	0%
3. Neutral	5	36%
4. Satisfied	6	43%
5. Very Satisfied	3	21%
Total Responses:	14	

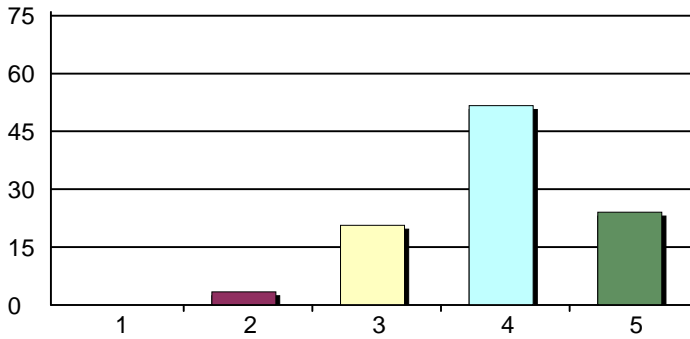
38. Lung Cancer Conference



1. Very Dissatisfied	0	0%
2. Dissatisfied	0	0%
3. Neutral	8	40%
4. Satisfied	7	35%
5. Very Satisfied	5	25%
Total Responses:	20	

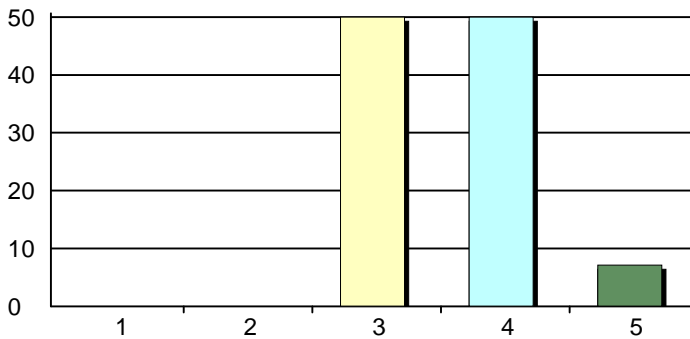
CME Needs Assessment Summary 2015

39. Medical Grand Rounds



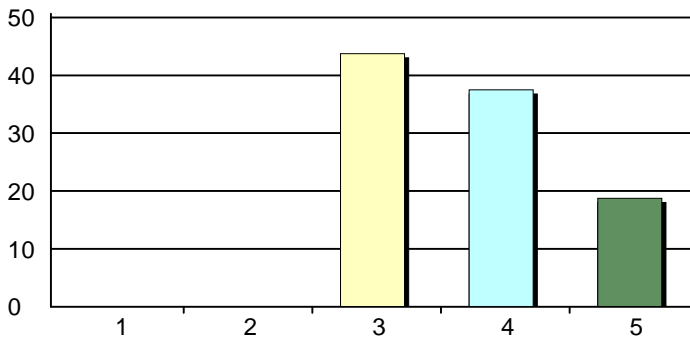
1. Very Dissatisfied	0	0%
2. Dissatisfied	1	3%
3. Neutral	6	21%
4. Satisfied	15	52%
5. Very Satisfied	7	24%
Total Responses:	29	

40. Multi-Institutional Sarcoma Board



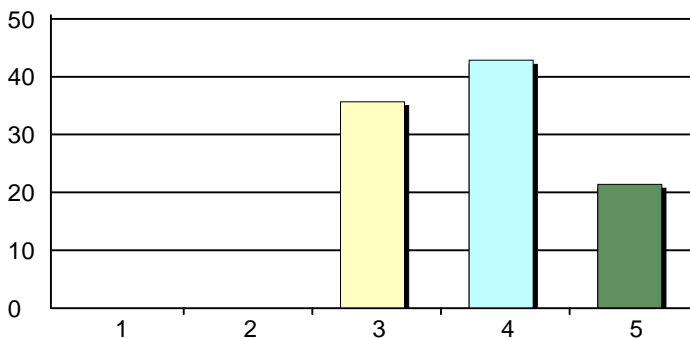
1. Very Dissatisfied	0	0%
2. Dissatisfied	0	0%
3. Neutral	7	50%
4. Satisfied	7	50%
5. Very Satisfied	1	7%
Total Responses:	14	

41. Neurology Grand Rounds



1. Very Dissatisfied	0	0%
2. Dissatisfied	0	0%
3. Neutral	7	44%
4. Satisfied	6	38%
5. Very Satisfied	3	19%
Total Responses:	16	

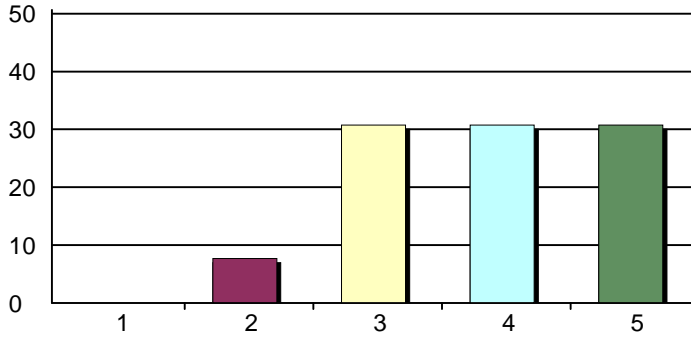
42. OB/GYN Grand Rounds



1. Very Dissatisfied	0	0%
2. Dissatisfied	0	0%
3. Neutral	5	36%
4. Satisfied	6	43%
5. Very Satisfied	3	21%
Total Responses:	14	

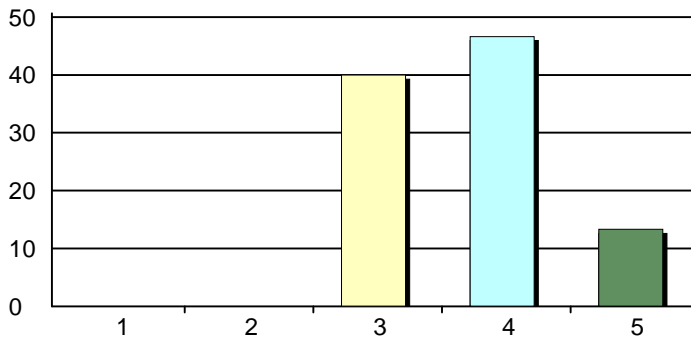
CME Needs Assessment Summary 2015

43. OB/GYN M&M Perinatal



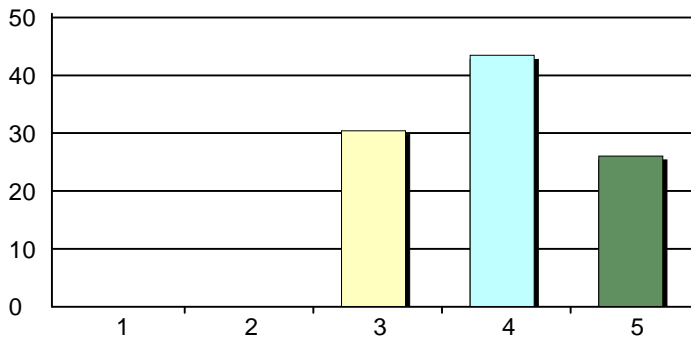
1. Very Dissatisfied	0	0%
2. Dissatisfied	1	8%
3. Neutral	4	31%
4. Satisfied	4	31%
5. Very Satisfied	4	31%
Total Responses:	13	

44. Orthopaedics Grand Rounds



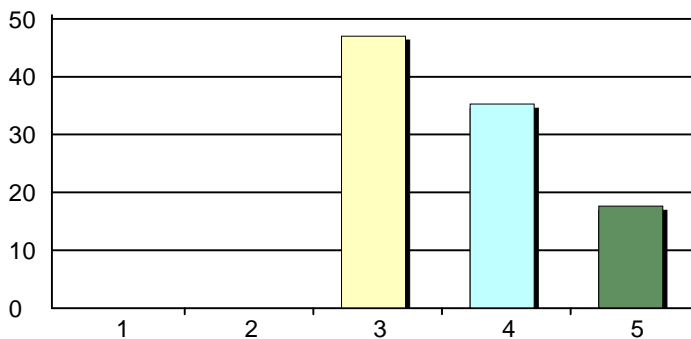
1. Very Dissatisfied	0	0%
2. Dissatisfied	0	0%
3. Neutral	6	40%
4. Satisfied	7	47%
5. Very Satisfied	2	13%
Total Responses:	15	

45. Pediatric Grand Rounds



1. Very Dissatisfied	0	0%
2. Dissatisfied	0	0%
3. Neutral	7	30%
4. Satisfied	10	43%
5. Very Satisfied	6	26%
Total Responses:	23	

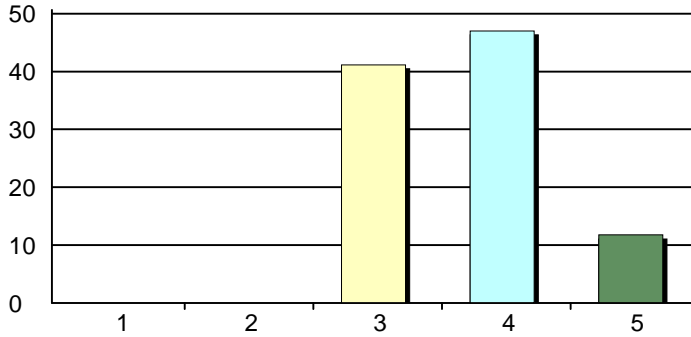
46. Pediatric Journal Club



1. Very Dissatisfied	0	0%
2. Dissatisfied	0	0%
3. Neutral	8	47%
4. Satisfied	6	35%
5. Very Satisfied	3	18%
Total Responses:	17	

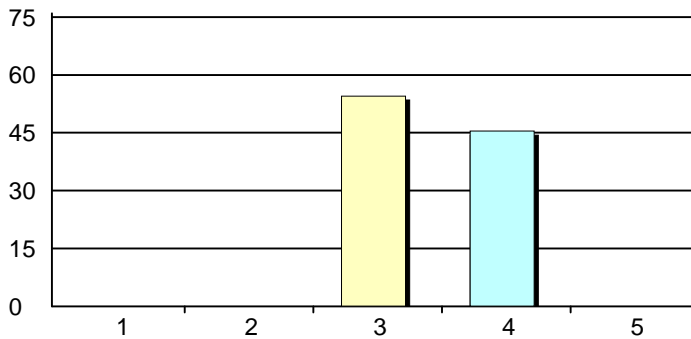
CME Needs Assessment Summary 2015

47. Pediatric Residents Lecture



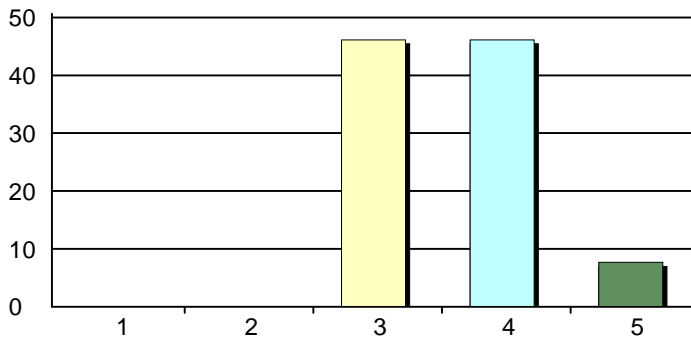
1. Very Dissatisfied	0	0%
2. Dissatisfied	0	0%
3. Neutral	7	41%
4. Satisfied	8	47%
5. Very Satisfied	2	12%
Total Responses:	17	

48. Professional Practice Review (CHH)



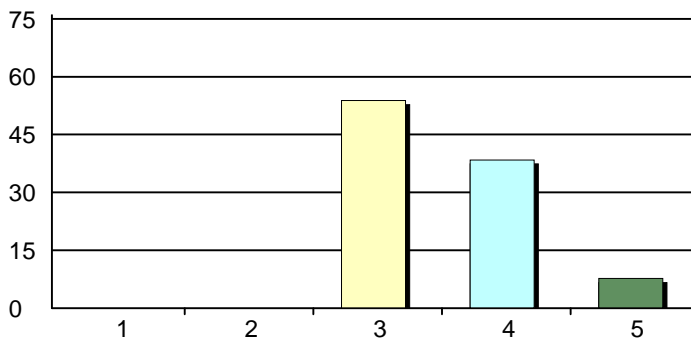
1. Very Dissatisfied	0	0%
2. Dissatisfied	0	0%
3. Neutral	6	55%
4. Satisfied	5	45%
5. Very Satisfied	0	0%
Total Responses:	11	

49. Pulmonary Conference



1. Very Dissatisfied	0	0%
2. Dissatisfied	0	0%
3. Neutral	6	46%
4. Satisfied	6	46%
5. Very Satisfied	1	8%
Total Responses:	13	

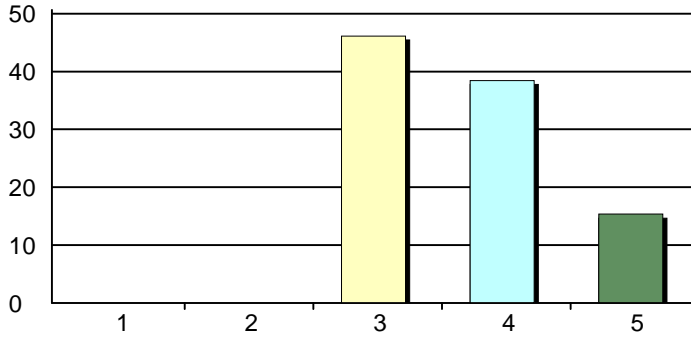
50. Pulmonary Journal Club



1. Very Dissatisfied	0	0%
2. Dissatisfied	0	0%
3. Neutral	7	54%
4. Satisfied	5	38%
5. Very Satisfied	1	8%
Total Responses:	13	

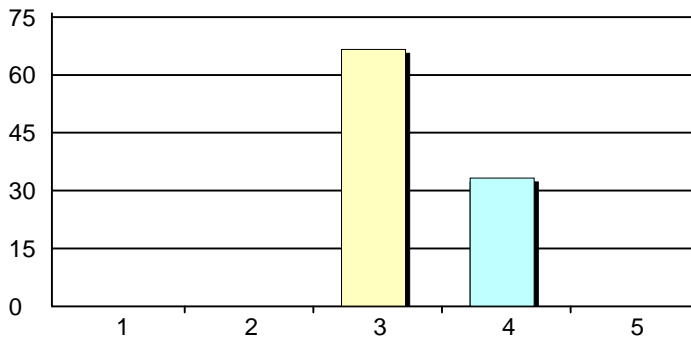
CME Needs Assessment Summary 2015

51. Pulmonary Pathology



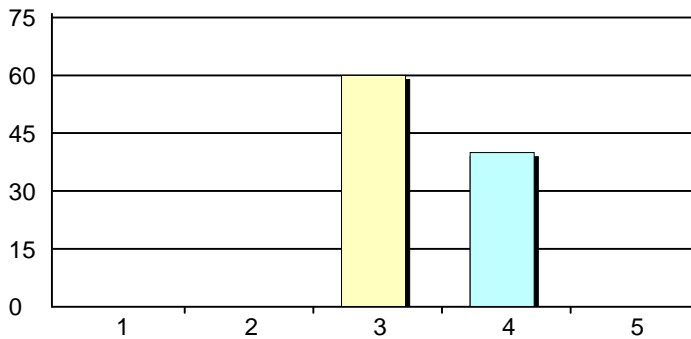
1. Very Dissatisfied	0	0%
2. Dissatisfied	0	0%
3. Neutral	6	46%
4. Satisfied	5	38%
5. Very Satisfied	2	15%
Total Responses:	13	

52. Pulmonary Research



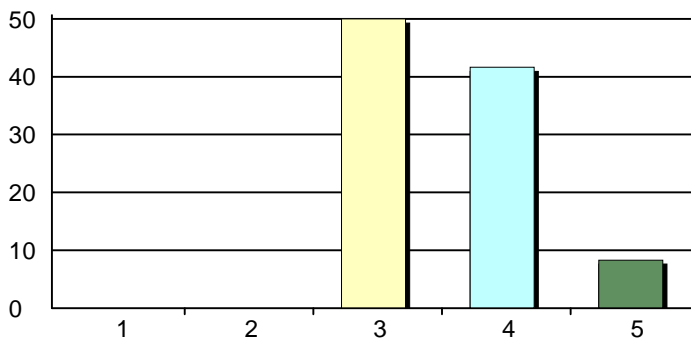
1. Very Dissatisfied	0	0%
2. Dissatisfied	0	0%
3. Neutral	8	67%
4. Satisfied	4	33%
5. Very Satisfied	0	0%
Total Responses:	12	

53. Radiology Conference



1. Very Dissatisfied	0	0%
2. Dissatisfied	0	0%
3. Neutral	6	60%
4. Satisfied	4	40%
5. Very Satisfied	0	0%
Total Responses:	10	

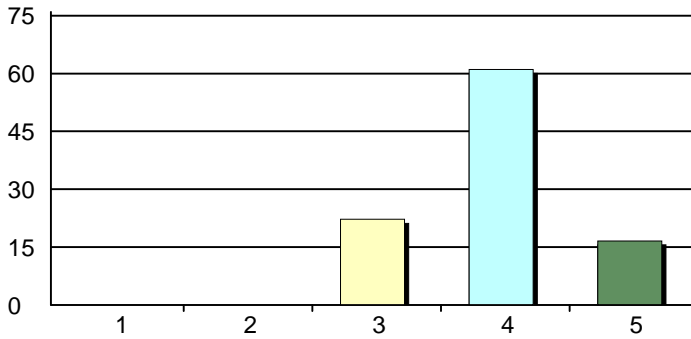
54. Spine/Neuroscience



1. Very Dissatisfied	0	0%
2. Dissatisfied	0	0%
3. Neutral	6	50%
4. Satisfied	5	42%
5. Very Satisfied	1	8%
Total Responses:	12	

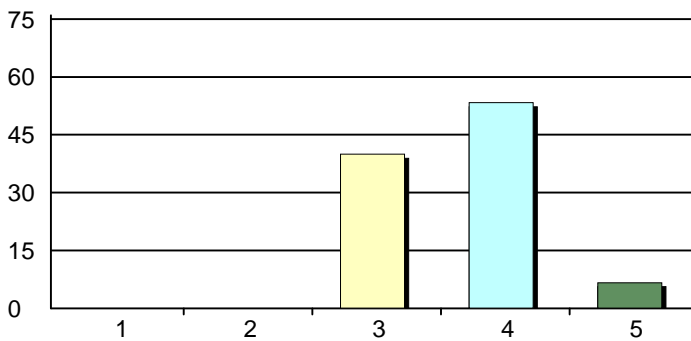
CME Needs Assessment Summary 2015

55. Surgical Grand Rounds



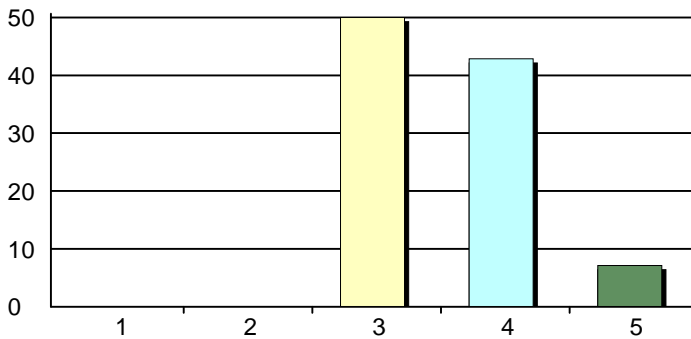
1. Very Dissatisfied	0	0%
2. Dissatisfied	0	0%
3. Neutral	4	22%
4. Satisfied	11	61%
5. Very Satisfied	3	17%
Total Responses:	18	

56. Surgical GI Club



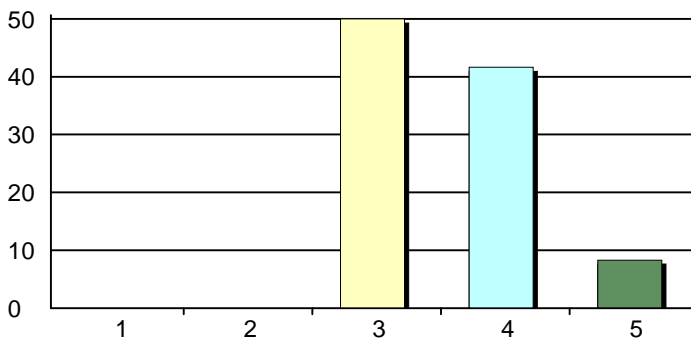
1. Very Dissatisfied	0	0%
2. Dissatisfied	0	0%
3. Neutral	6	40%
4. Satisfied	8	53%
5. Very Satisfied	1	7%
Total Responses:	15	

57. Surgical Journal Club



1. Very Dissatisfied	0	0%
2. Dissatisfied	0	0%
3. Neutral	7	50%
4. Satisfied	6	43%
5. Very Satisfied	1	7%
Total Responses:	14	

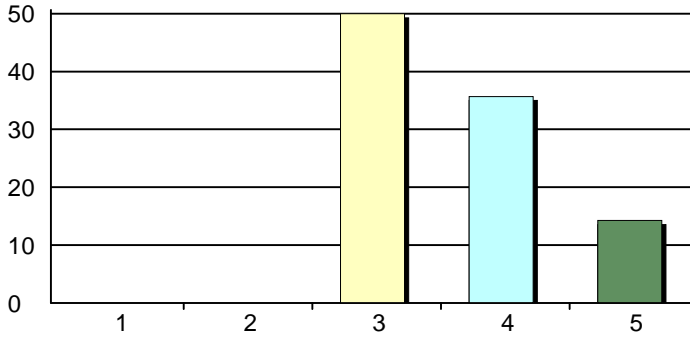
58. Surgical Perioperative



1. Very Dissatisfied	0	0%
2. Dissatisfied	0	0%
3. Neutral	6	50%
4. Satisfied	5	42%
5. Very Satisfied	1	8%
Total Responses:	12	

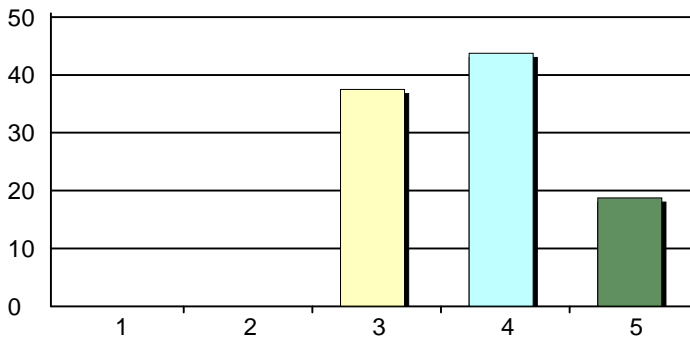
CME Needs Assessment Summary 2015

59. Surgical Peds Trauma



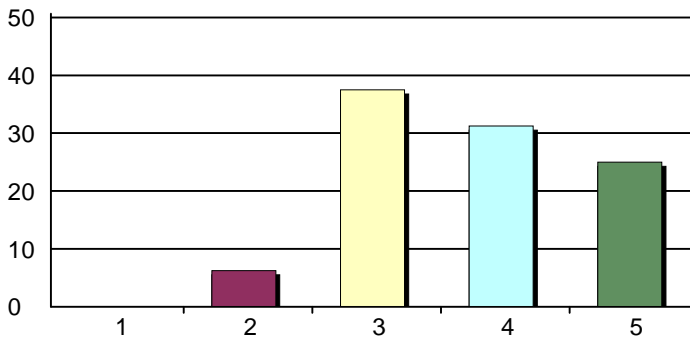
1. Very Dissatisfied	0	0%
2. Dissatisfied	0	0%
3. Neutral	7	50%
4. Satisfied	5	36%
5. Very Satisfied	2	14%
Total Responses:	14	

60. Surgical Trauma



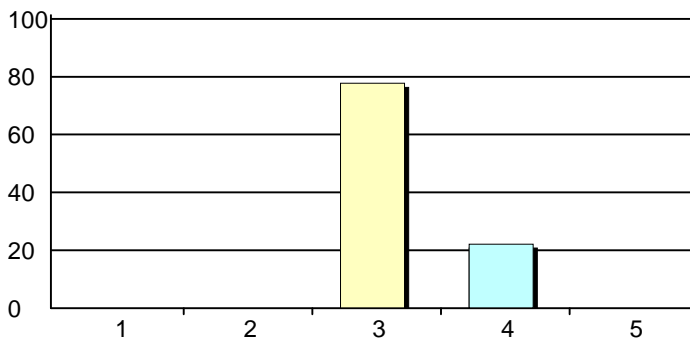
1. Very Dissatisfied	0	0%
2. Dissatisfied	0	0%
3. Neutral	6	38%
4. Satisfied	7	44%
5. Very Satisfied	3	19%
Total Responses:	16	

61. Surgical M&M



1. Very Dissatisfied	0	0%
2. Dissatisfied	1	6%
3. Neutral	6	38%
4. Satisfied	5	31%
5. Very Satisfied	4	25%
Total Responses:	16	

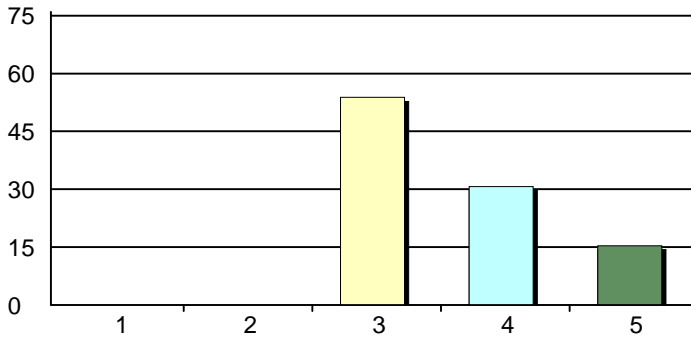
62. Surgical Rounds (VAMC)



1. Very Dissatisfied	0	0%
2. Dissatisfied	0	0%
3. Neutral	7	78%
4. Satisfied	2	22%
5. Very Satisfied	0	0%
Total Responses:	9	

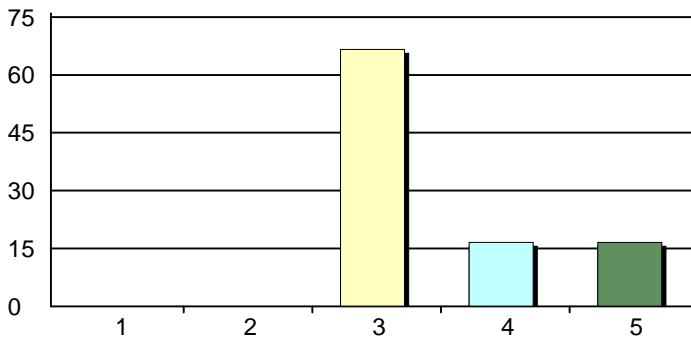
CME Needs Assessment Summary 2015

63. Tobacco Cessation (Outreach)



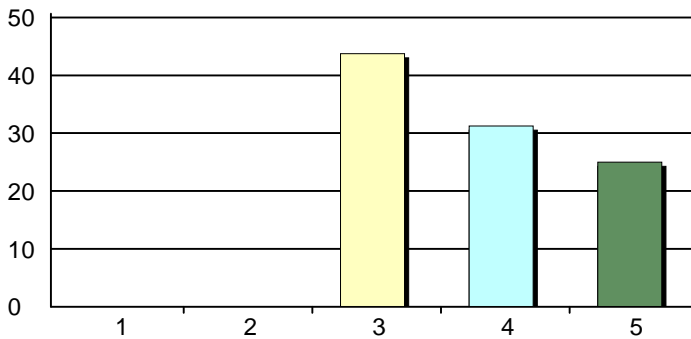
1. Very Dissatisfied	0	0%
2. Dissatisfied	0	0%
3. Neutral	7	54%
4. Satisfied	4	31%
5. Very Satisfied	2	15%
Total Responses:	13	

64. Tri-State Endocrinology Society



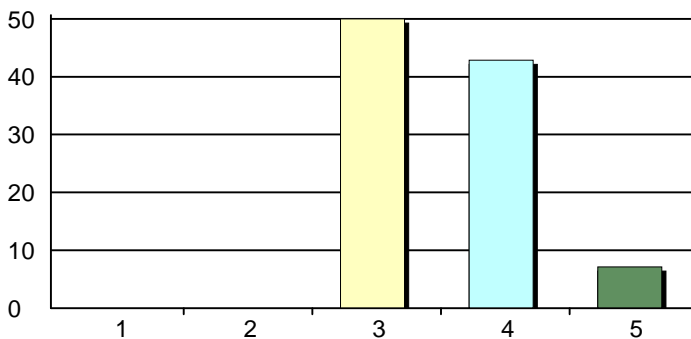
1. Very Dissatisfied	0	0%
2. Dissatisfied	0	0%
3. Neutral	8	67%
4. Satisfied	2	17%
5. Very Satisfied	2	17%
Total Responses:	12	

65. Tumor CHH



1. Very Dissatisfied	0	0%
2. Dissatisfied	0	0%
3. Neutral	7	44%
4. Satisfied	5	31%
5. Very Satisfied	4	25%
Total Responses:	16	

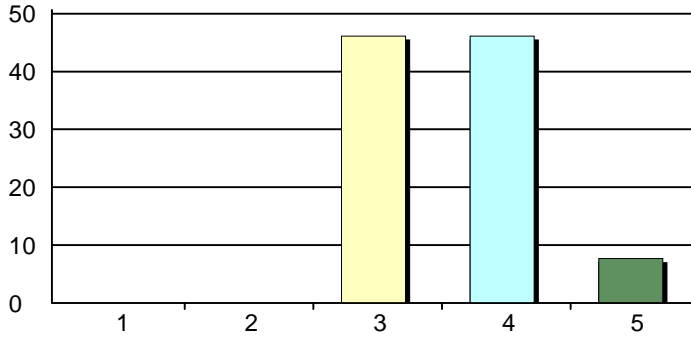
66. Tumor CHH-Breast



1. Very Dissatisfied	0	0%
2. Dissatisfied	0	0%
3. Neutral	7	50%
4. Satisfied	6	43%
5. Very Satisfied	1	7%
Total Responses:	14	

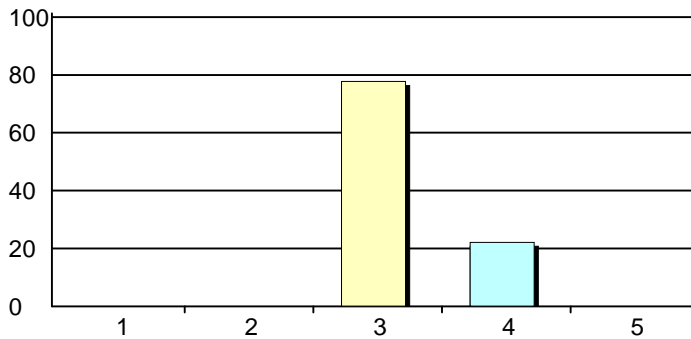
CME Needs Assessment Summary 2015

67. Tumor CHH-Lung



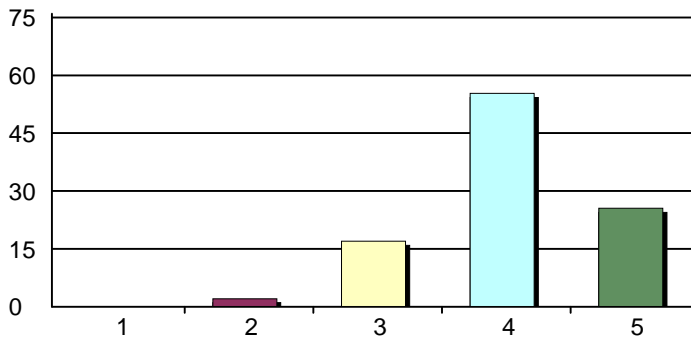
1. Very Dissatisfied	0	0%
2. Dissatisfied	0	0%
3. Neutral	6	46%
4. Satisfied	6	46%
5. Very Satisfied	1	8%
Total Responses:	13	

68. Tumor SMMC



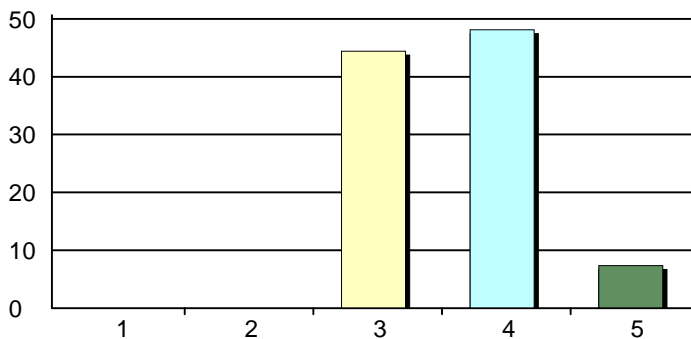
1. Very Dissatisfied	0	0%
2. Dissatisfied	0	0%
3. Neutral	7	78%
4. Satisfied	2	22%
5. Very Satisfied	0	0%
Total Responses:	9	

69. Research Day Conference



1. Very Dissatisfied	0	0%
2. Dissatisfied	1	2%
3. Neutral	8	17%
4. Satisfied	26	55%
5. Very Satisfied	12	26%
Total Responses:	47	

70. Alumni Homecoming Conference



1. Very Dissatisfied	0	0%
2. Dissatisfied	0	0%
3. Neutral	12	44%
4. Satisfied	13	48%
5. Very Satisfied	2	7%
Total Responses:	27	