

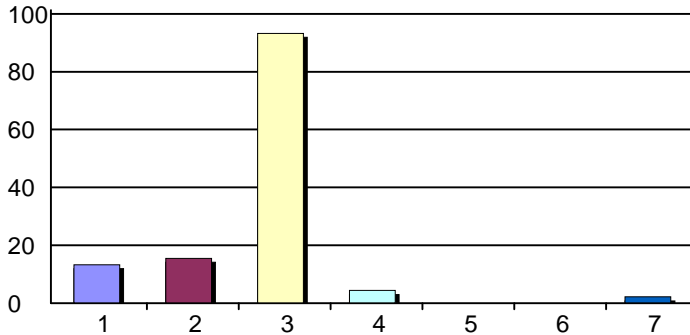
CME Needs Assessment Summary 2017-2018

Creation Date: 1/26/2018

Time Interval: 9/13/2017 to 1/26/2018

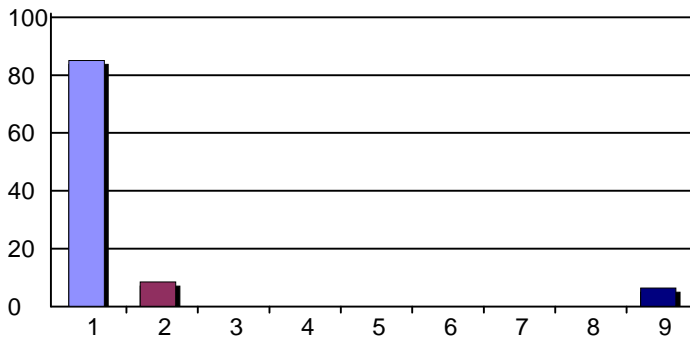
Total Respondents: 47

1. What is the best way for CME to communicate with you regarding future CME activities that might be of interest to you?



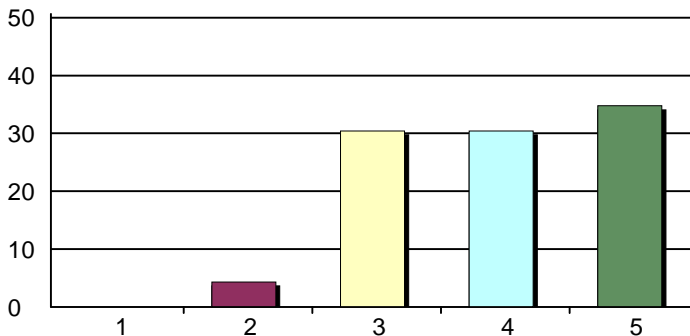
1. Brochure in the mail	6	13%
2. Text message	7	16%
3. E-mail message	42	93%
4. Cell phone	2	4%
5. Office phone	0	0%
6. Twitter	0	0%
7. Facebook	1	2%
Total Responses:	45	

3. You are a.....



1. Physician	40	85%
2. Resident	4	9%
3. Pharmacist	0	0%
4. Nurse	0	0%
5. Basic Scientist	0	0%
6. Medical Student	0	0%
7. Medical Staff	0	0%
8. Dentist	0	0%
9. Other health professional (please specify below)	3	6%
Total Responses:	47	
Mean: 1.60	Standard Deviation: 1.97	

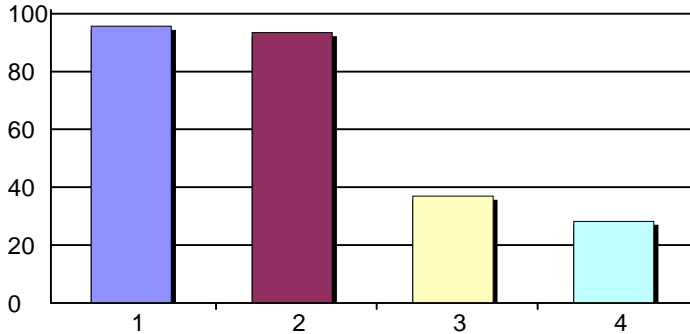
5. Please indicate your birth year.



1. 1925-1933	0	0%
2. 1934-1946	2	4%
3. 1947-1964	14	30%
4. 1965-1980	14	30%
5. 1981 and beyond	16	35%
Total Responses:	46	
Mean: 3.96	Standard Deviation: 0.92	

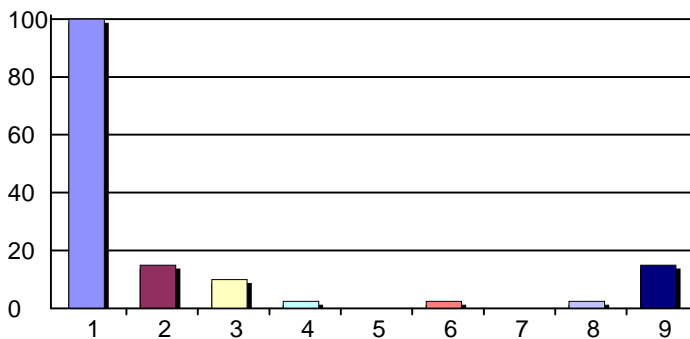
CME Needs Assessment Summary 2017-2018

6. Where are you credentialed?



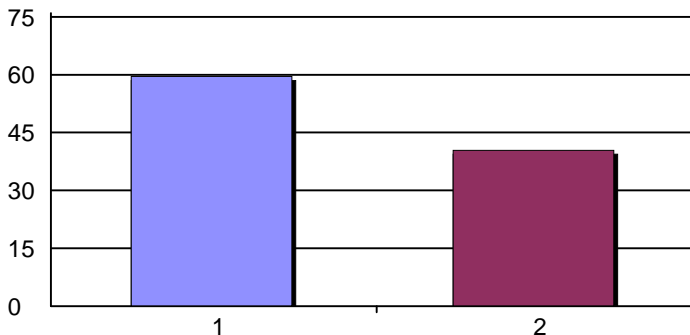
1. Marshall Health	44	96%
2. CHH	43	93%
3. SMMC	17	37%
4. VAMC	13	28%
Total Responses:	46	

7. Where are you licensed?



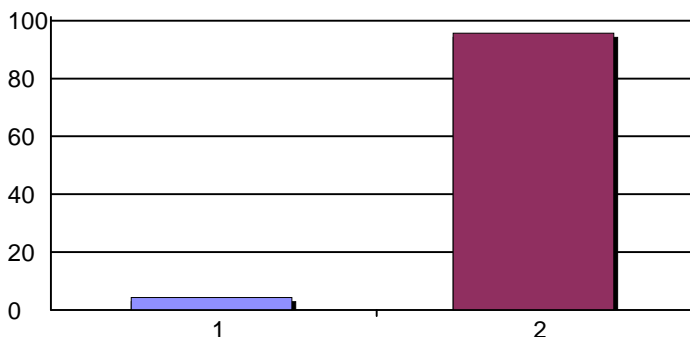
1. West Virginia	40	100%
2. Ohio	6	15%
3. Kentucky	4	10%
4. Virginia	1	2%
5. Maryland	0	0%
6. Pennsylvania	1	2%
7. New York	0	0%
8. North Carolina	1	2%
9. Other state (please specify next page)	6	15%
Total Responses:	40	

9. Have you completed a CME Disclosure Form this year? If No, go to <http://jcesom.marshall.edu/continuing-medical-education/policies-forms/> and complete.



1. Yes	28	60%
2. No	19	40%
Total Responses:	47	
Mean: 1.40	Standard Deviation: 0.50	

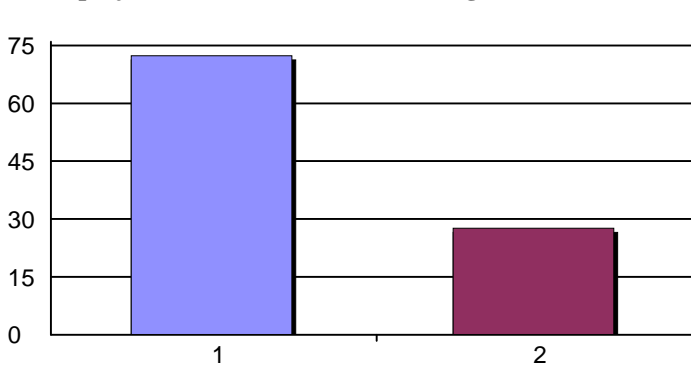
10. Do you have any Conflicts of Interest that would prevent you from participating in planned events? If Yes, explain on your Disclosure form and submit to CME, HSL 2403M.



1. Yes	2	4%
2. No	44	96%
Total Responses:	46	
Mean: 1.96	Standard Deviation: 0.21	

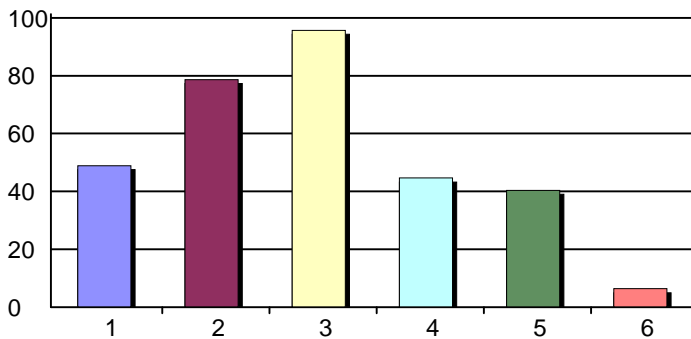
CME Needs Assessment Summary 2017-2018

11. Have you completed the 3 hour WV licensure requirement on Drug Diversion or Prescribing of Controlled Substances? If you answered No. The Drug Diversion training is available on the CME website via the link on the Events Calendar. <http://jcesom.marshall.edu/continuing-medical-education/events-calendar/>



1. Yes	34	72%
2. NO	13	28%
Total Responses:	47	

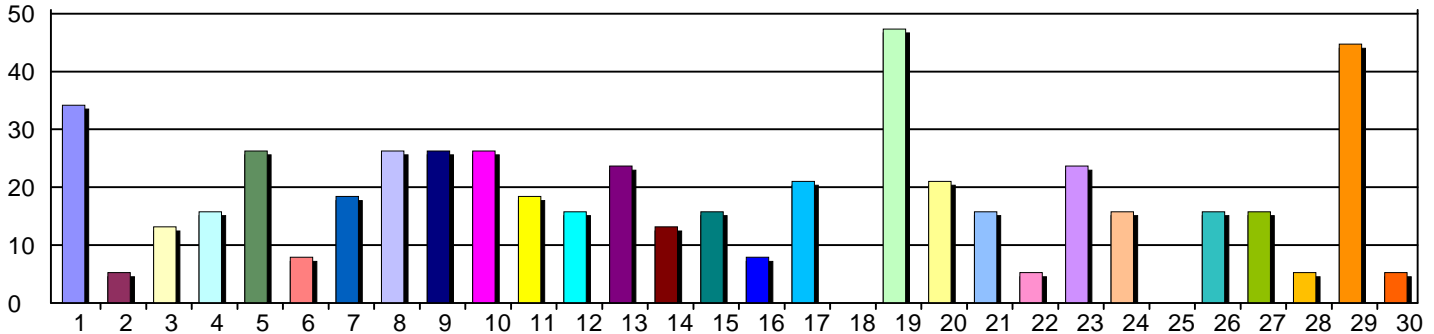
12. How do you utilize CME?



1. Provide information to patients	23	49%
2. Put new knowledge into practice	37	79%
3. To stay up-to-date	45	96%
4. Better understand indications/contraindication...	21	45%
5. Share the information with colleagues	19	40%
6. Other - please specify below	3	6%
Total Responses:	47	

CME Needs Assessment Summary 2017-2018

14. What areas of CME would best meet your educational needs?

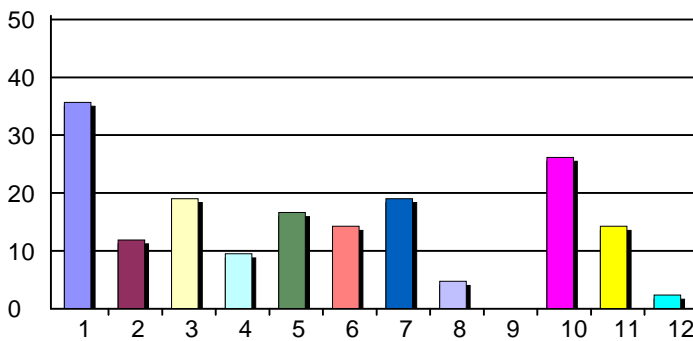


1. ACLS	13	34%	16. Gynecology	3	8%
2. AIDS/HIV	2	5%	17. Hematology	8	21%
3. Allergy & Immunology	5	13%	18. HIPAA/EMTALA	0	0%
4. Asthma	6	16%	19. Infectious Disease	18	47%
5. Cardiology	10	26%	20. Informatics & Technology	8	21%
6. Compliance issues	3	8%	21. Nephrology	6	16%
7. Dementia	7	18%	22. Neonatology	2	5%
8. Diabetes	10	26%	23. Neurology	9	24%
9. Endocrinology	10	26%	24. Nutrition/Diet/Lifestyle	6	16%
10. End of Life Care	10	26%	25. Obstetrics	0	0%
11. Emergency Medicine	7	18%	26. Oncology	6	16%
12. Ethical issues	6	16%	27. Ophthalmology	6	16%
13. Gastroenterology	9	24%	28. Otolaryngology	2	5%
14. Genetics	5	13%	29. Pain Management	17	45%
15. Geriatrics	6	16%	30. PALS	2	5%

Total Responses:

38

15. Continuing - What areas of CME would best meet your educational needs?



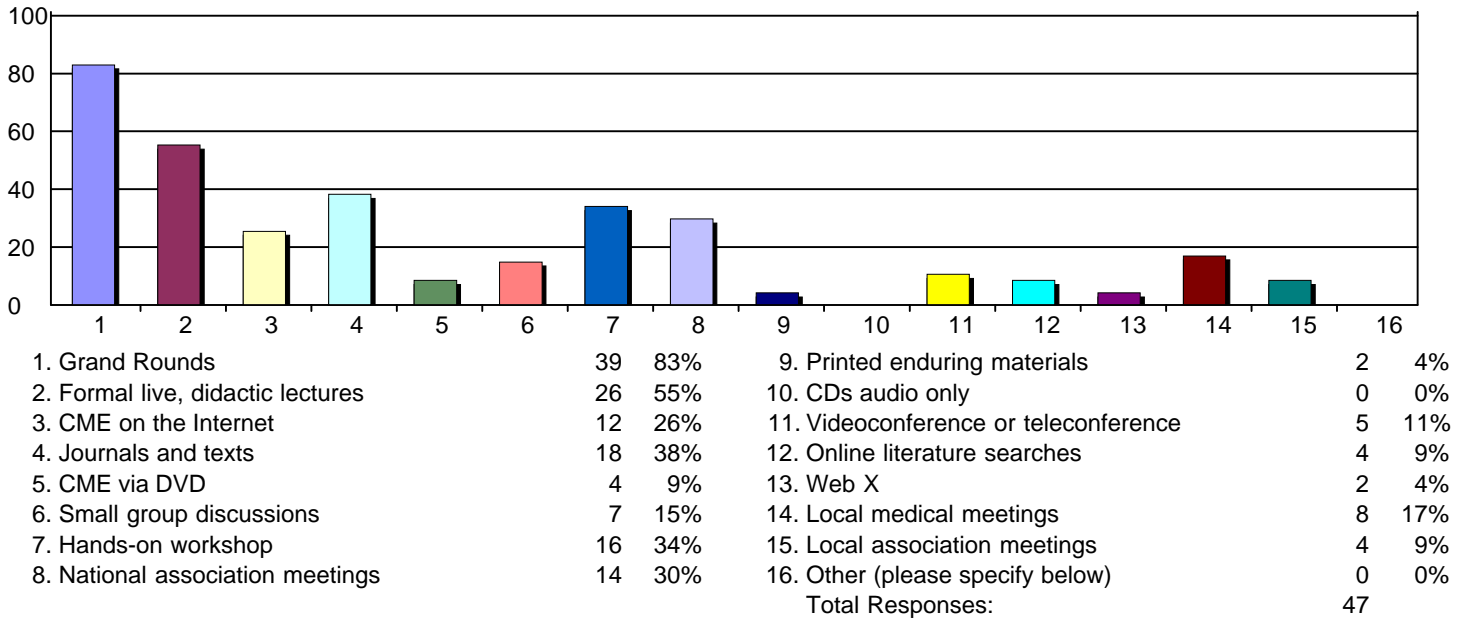
1. Patient Safety	15	36%
2. Pediatrics	5	12%
3. Psychiatry	8	19%
4. Pulmonology	4	10%
5. Radiology	7	17%
6. Rheumatology	6	14%
7. Risk Management	8	19%
8. Robotic Surgery	2	5%
9. Urology	0	0%
10. Orthopaedics	11	26%
11. Dermatology	6	14%
12. DermPath	1	2%

Total Responses:

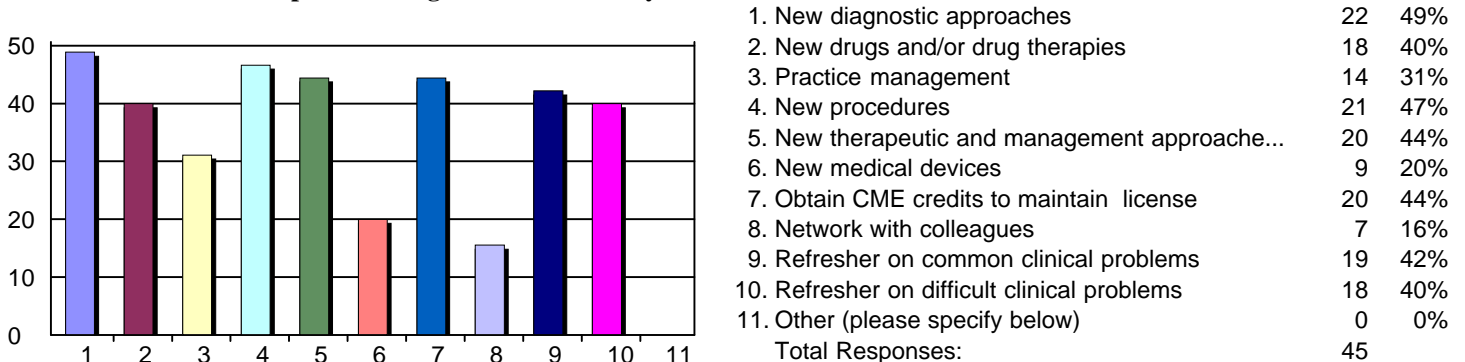
42

CME Needs Assessment Summary 2017-2018

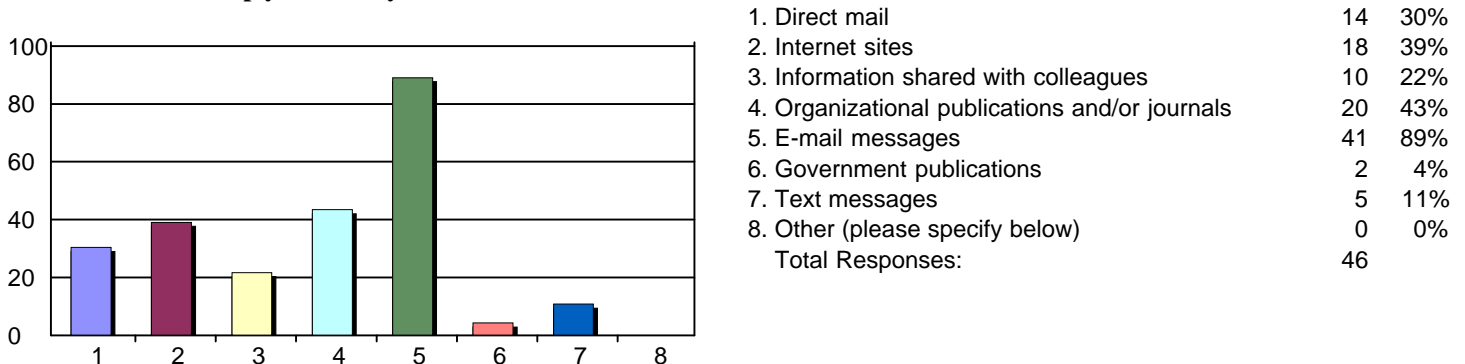
17. What type CME is the most effective in helping you apply CME learning in your clinical practice?



20. Which of these items provide the greatest interest in your selection of CME activities?

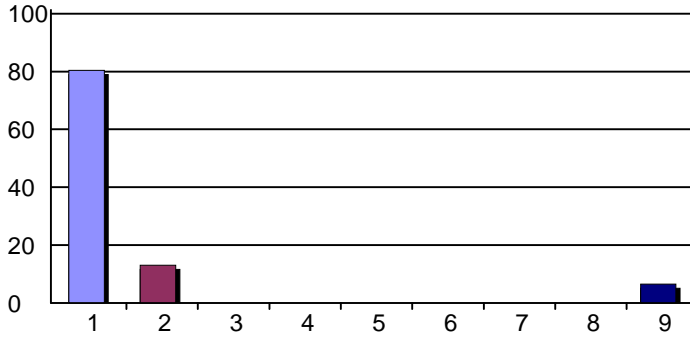


22. What sources help you identify CME activities?



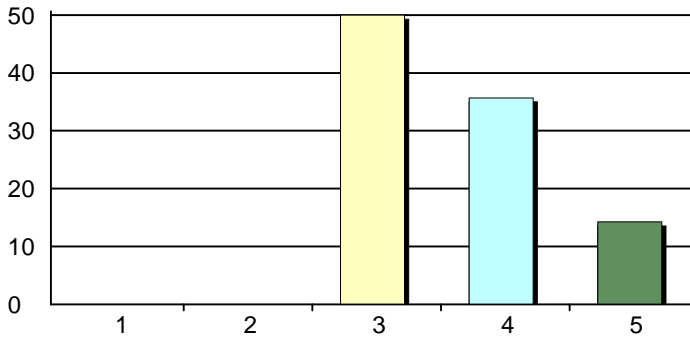
CME Needs Assessment Summary 2017-2018

25. You are a.....



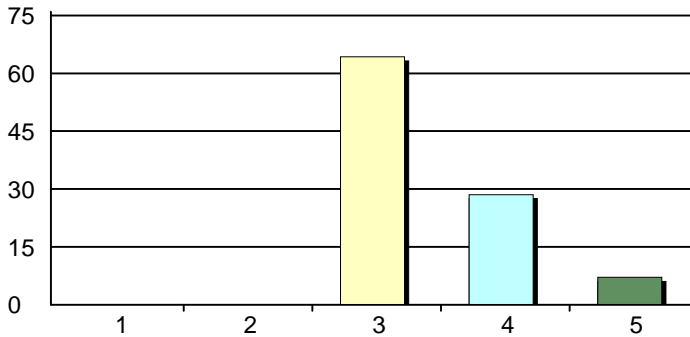
1. Physician	37	80%
2. Resident	6	13%
3. Pharmacist	0	0%
4. Nurse	0	0%
5. Basic Scientist	0	0%
6. Medical Student	0	0%
7. Medical Staff	0	0%
8. Dentist	0	0%
9. Other health professional (please specify below)	3	7%
Total Responses:	46	
Mean: 1.65	Standard Deviation: 1.99	

26. Breast Cancer Conference



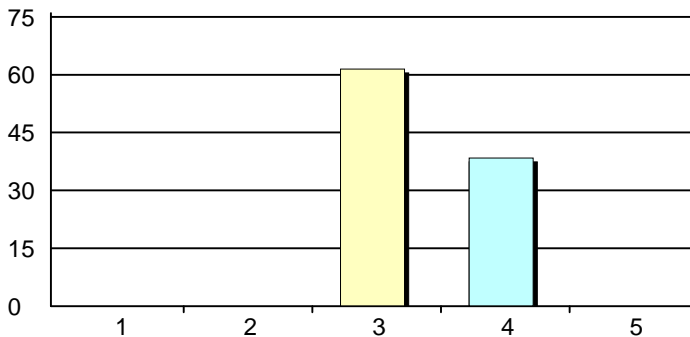
1. Very Dissatisfied	0	0%
2. Dissatisfied	0	0%
3. Neutral	7	50%
4. Satisfied	5	36%
5. Very Satisfied	2	14%
Total Responses:	14	

27. Cardiology Basic Science



1. Very Dissatisfied	0	0%
2. Dissatisfied	0	0%
3. Neutral	9	64%
4. Satisfied	4	29%
5. Very Satisfied	1	7%
Total Responses:	14	

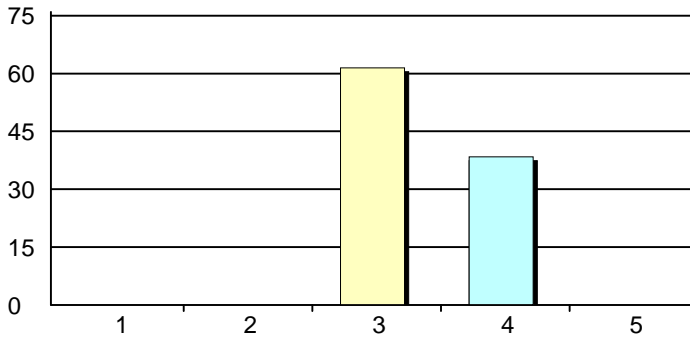
28. Cardiology Cath



1. Very Dissatisfied	0	0%
2. Dissatisfied	0	0%
3. Neutral	8	62%
4. Satisfied	5	38%
5. Very Satisfied	0	0%
Total Responses:	13	

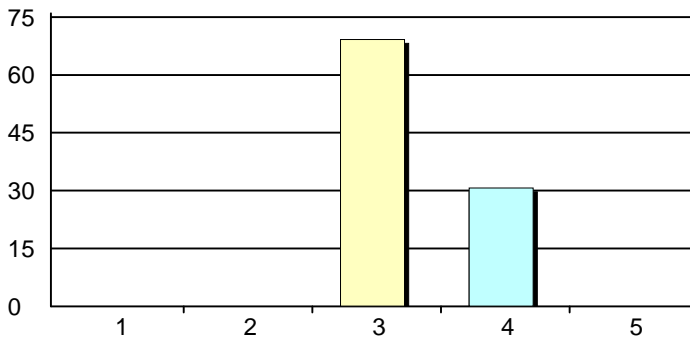
CME Needs Assessment Summary 2017-2018

29. Cardiology Journal



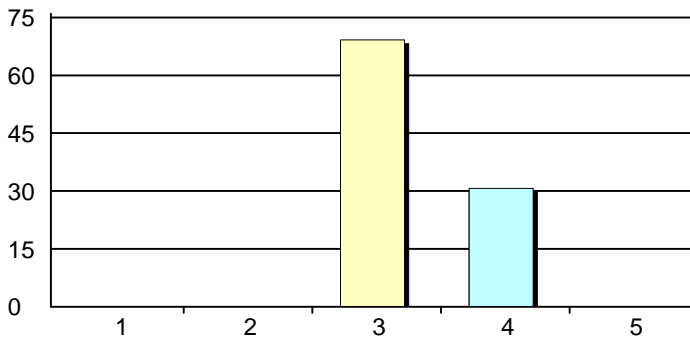
1. Very Dissatisfied	0	0%
2. Dissatisfied	0	0%
3. Neutral	8	62%
4. Satisfied	5	38%
5. Very Satisfied	0	0%
Total Responses:	13	

30. Cardiology Disease M&M/CVT



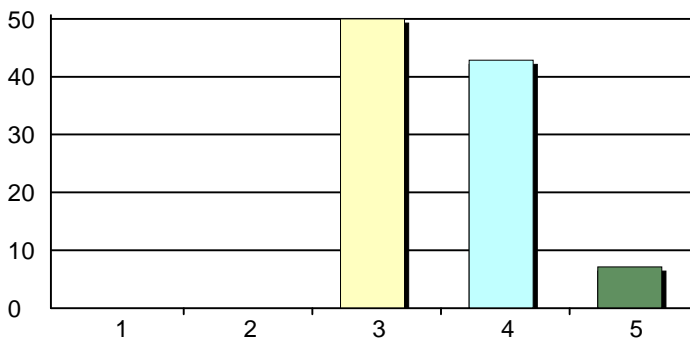
1. Very Dissatisfied	0	0%
2. Dissatisfied	0	0%
3. Neutral	9	69%
4. Satisfied	4	31%
5. Very Satisfied	0	0%
Total Responses:	13	

31. Cardiology Nuclear



1. Very Dissatisfied	0	0%
2. Dissatisfied	0	0%
3. Neutral	9	69%
4. Satisfied	4	31%
5. Very Satisfied	0	0%
Total Responses:	13	

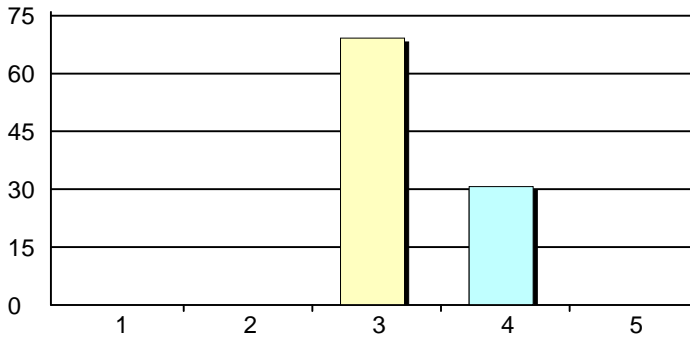
32. ECCO Med Oncology GR & Core Lectures



1. Very Dissatisfied	0	0%
2. Dissatisfied	0	0%
3. Neutral	7	50%
4. Satisfied	6	43%
5. Very Satisfied	1	7%
Total Responses:	14	

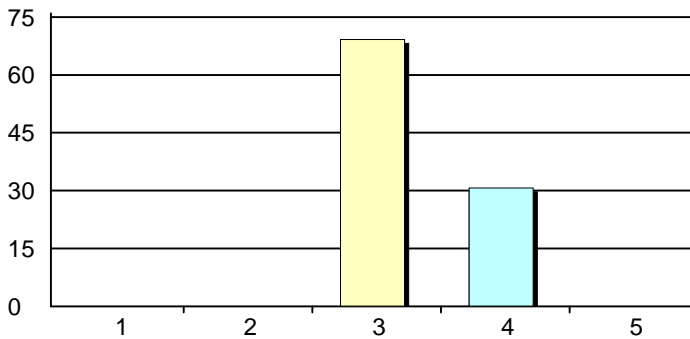
CME Needs Assessment Summary 2017-2018

33. Echo Conference



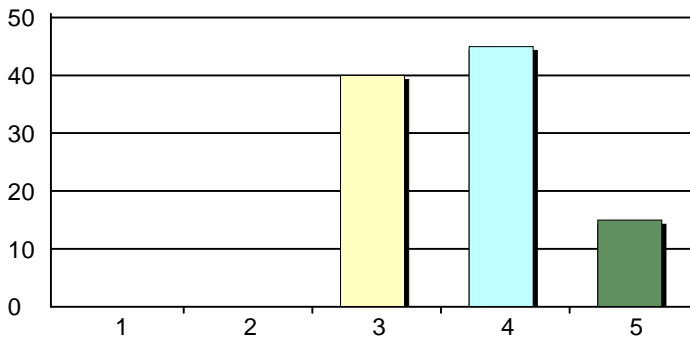
1. Very Dissatisfied	0	0%
2. Dissatisfied	0	0%
3. Neutral	9	69%
4. Satisfied	4	31%
5. Very Satisfied	0	0%
Total Responses:	13	

34. EKG Cardiology Conference



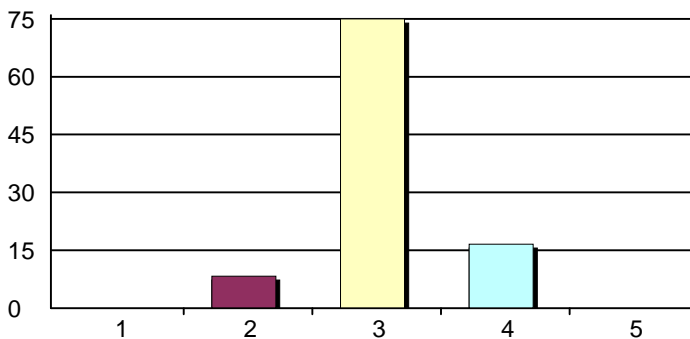
1. Very Dissatisfied	0	0%
2. Dissatisfied	0	0%
3. Neutral	9	69%
4. Satisfied	4	31%
5. Very Satisfied	0	0%
Total Responses:	13	

35. Family Practice Grand Rounds



1. Very Dissatisfied	0	0%
2. Dissatisfied	0	0%
3. Neutral	8	40%
4. Satisfied	9	45%
5. Very Satisfied	3	15%
Total Responses:	20	

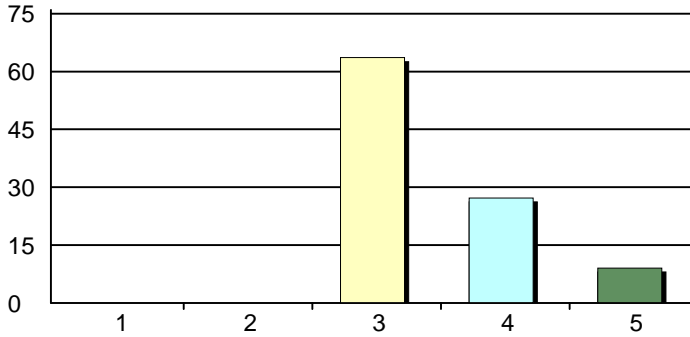
36. Fetal Anomalies-OB



1. Very Dissatisfied	0	0%
2. Dissatisfied	1	8%
3. Neutral	9	75%
4. Satisfied	2	17%
5. Very Satisfied	0	0%
Total Responses:	12	

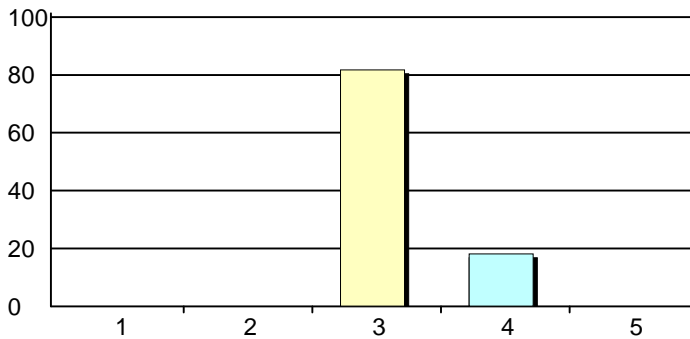
CME Needs Assessment Summary 2017-2018

37. Gynecology Conference M&M



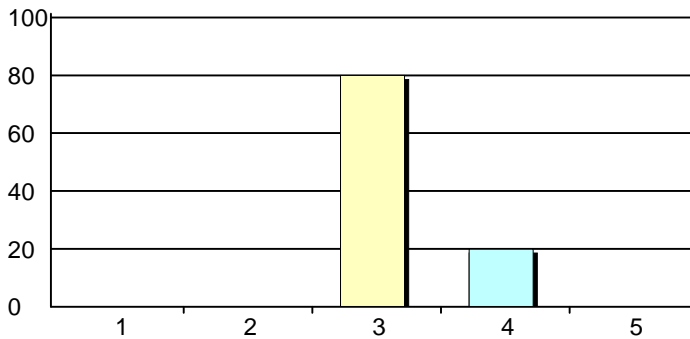
1. Very Dissatisfied	0	0%
2. Dissatisfied	0	0%
3. Neutral	7	64%
4. Satisfied	3	27%
5. Very Satisfied	1	9%
Total Responses:	11	

38. HIMG Noon Conference



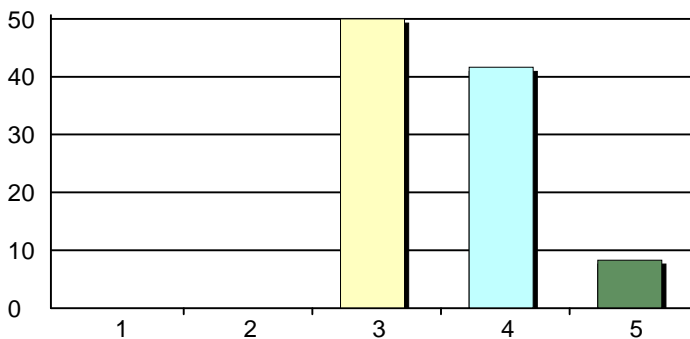
1. Very Dissatisfied	0	0%
2. Dissatisfied	0	0%
3. Neutral	9	82%
4. Satisfied	2	18%
5. Very Satisfied	0	0%
Total Responses:	11	

39. Holzer Med Ctr - Marshall Tuesdays



1. Very Dissatisfied	0	0%
2. Dissatisfied	0	0%
3. Neutral	8	80%
4. Satisfied	2	20%
5. Very Satisfied	0	0%
Total Responses:	10	

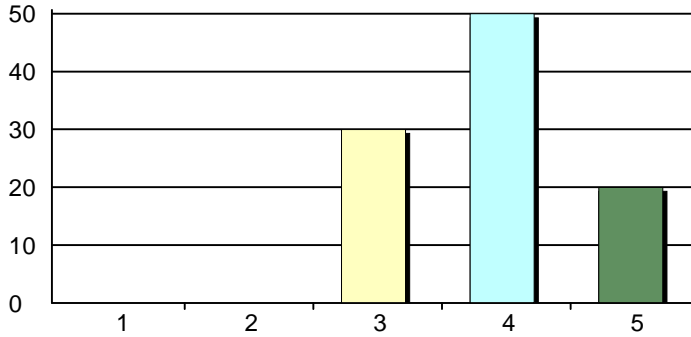
40. Lung Cancer Conference



1. Very Dissatisfied	0	0%
2. Dissatisfied	0	0%
3. Neutral	6	50%
4. Satisfied	5	42%
5. Very Satisfied	1	8%
Total Responses:	12	

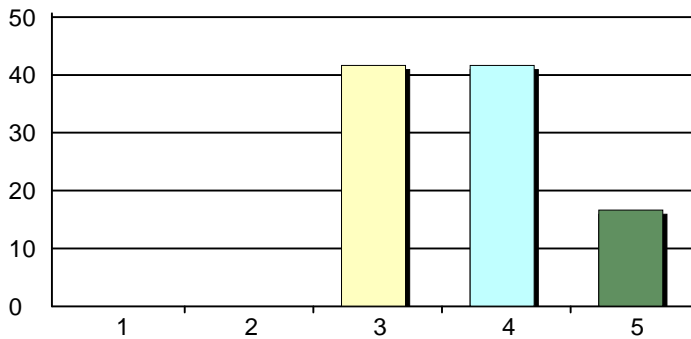
CME Needs Assessment Summary 2017-2018

41. Medical Grand Rounds



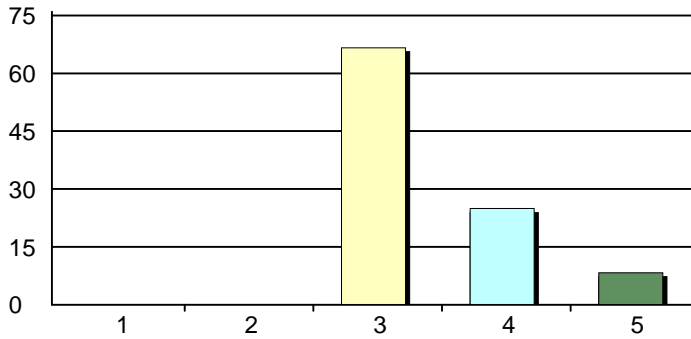
1. Very Dissatisfied	0	0%
2. Dissatisfied	0	0%
3. Neutral	6	30%
4. Satisfied	10	50%
5. Very Satisfied	4	20%
Total Responses:	20	

42. Multi-Institutional Sarcoma Board



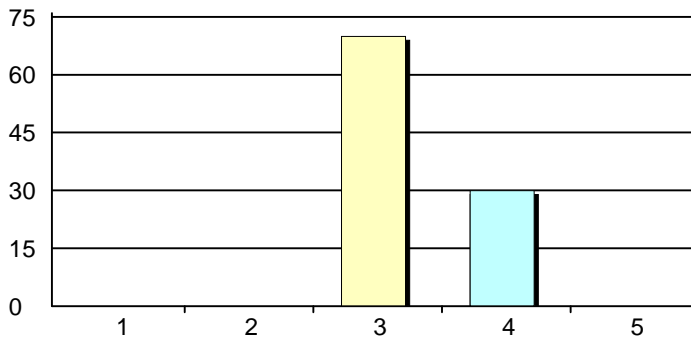
1. Very Dissatisfied	0	0%
2. Dissatisfied	0	0%
3. Neutral	5	42%
4. Satisfied	5	42%
5. Very Satisfied	2	17%
Total Responses:	12	

43. Neurology Grand Rounds



1. Very Dissatisfied	0	0%
2. Dissatisfied	0	0%
3. Neutral	8	67%
4. Satisfied	3	25%
5. Very Satisfied	1	8%
Total Responses:	12	

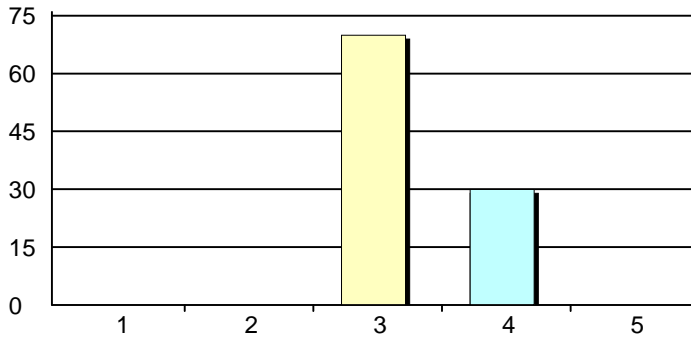
44. Neuro Surgery



1. Very Dissatisfied	0	0%
2. Dissatisfied	0	0%
3. Neutral	7	70%
4. Satisfied	3	30%
5. Very Satisfied	0	0%
Total Responses:	10	

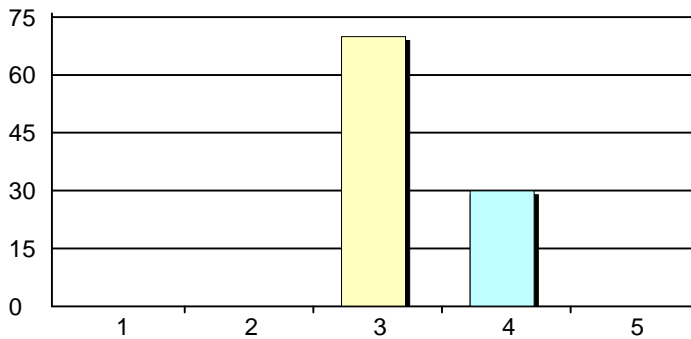
CME Needs Assessment Summary 2017-2018

45. OB/GYN Grand Rounds



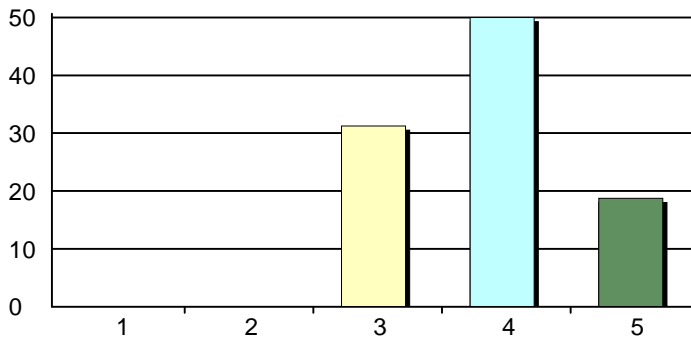
1. Very Dissatisfied	0	0%
2. Dissatisfied	0	0%
3. Neutral	7	70%
4. Satisfied	3	30%
5. Very Satisfied	0	0%
Total Responses:	10	

46. OB/GYN M&M Perinatal



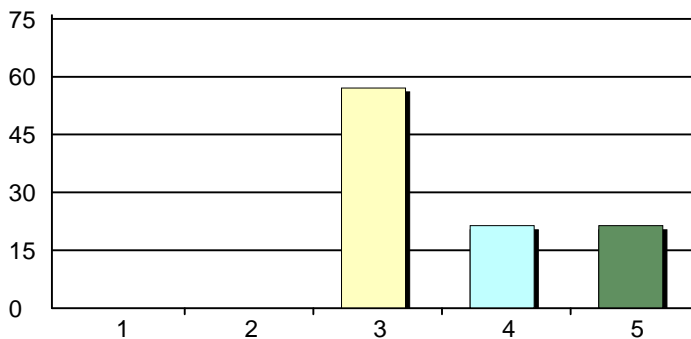
1. Very Dissatisfied	0	0%
2. Dissatisfied	0	0%
3. Neutral	7	70%
4. Satisfied	3	30%
5. Very Satisfied	0	0%
Total Responses:	10	

47. Orthopaedics Grand Rounds



1. Very Dissatisfied	0	0%
2. Dissatisfied	0	0%
3. Neutral	5	31%
4. Satisfied	8	50%
5. Very Satisfied	3	19%
Total Responses:	16	

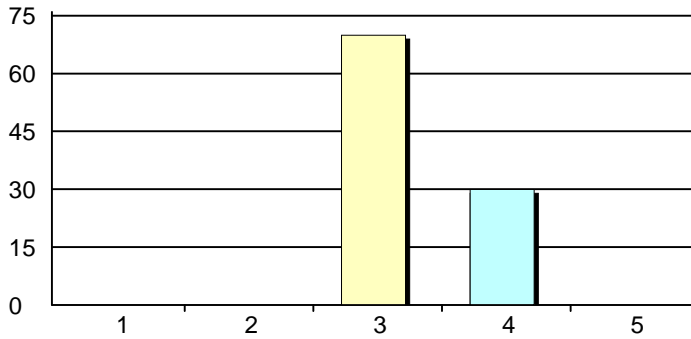
48. Pediatric Grand Rounds



1. Very Dissatisfied	0	0%
2. Dissatisfied	0	0%
3. Neutral	8	57%
4. Satisfied	3	21%
5. Very Satisfied	3	21%
Total Responses:	14	

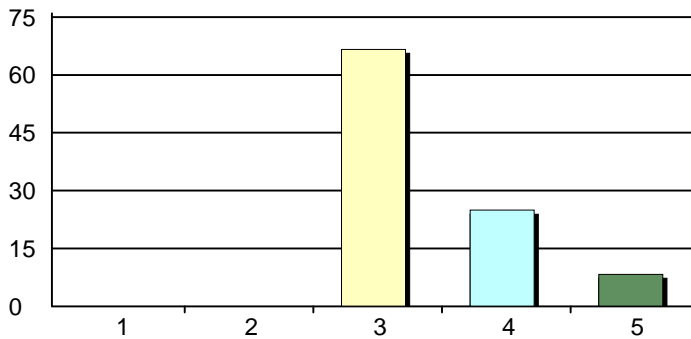
CME Needs Assessment Summary 2017-2018

49. Pediatric Journal Club



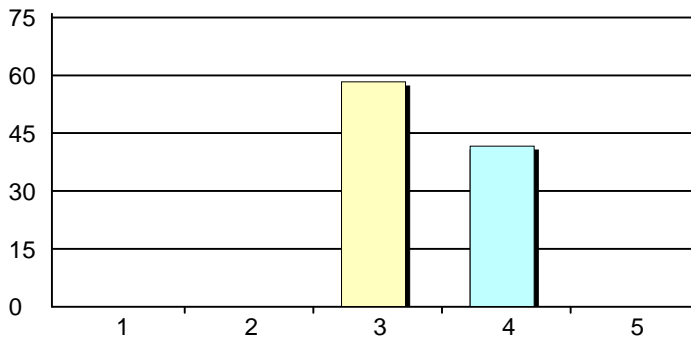
1. Very Dissatisfied	0	0%
2. Dissatisfied	0	0%
3. Neutral	7	70%
4. Satisfied	3	30%
5. Very Satisfied	0	0%
Total Responses:	10	

50. Pediatric Residents Lecture



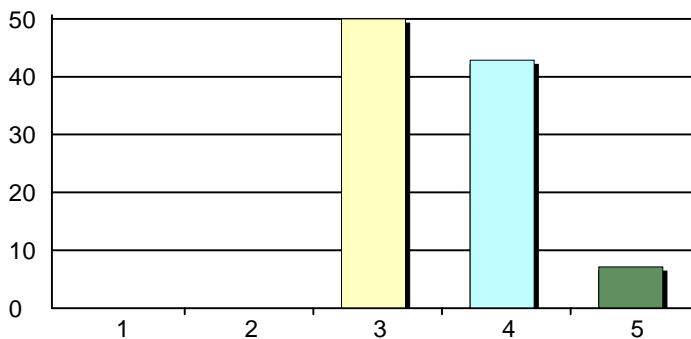
1. Very Dissatisfied	0	0%
2. Dissatisfied	0	0%
3. Neutral	8	67%
4. Satisfied	3	25%
5. Very Satisfied	1	8%
Total Responses:	12	

51. Professional Practice Review (CHH)



1. Very Dissatisfied	0	0%
2. Dissatisfied	0	0%
3. Neutral	7	58%
4. Satisfied	5	42%
5. Very Satisfied	0	0%
Total Responses:	12	

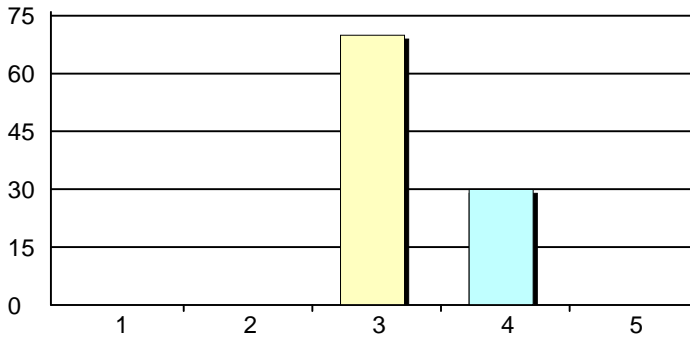
52. Psychiatry Grand Rounds



1. Very Dissatisfied	0	0%
2. Dissatisfied	0	0%
3. Neutral	7	50%
4. Satisfied	6	43%
5. Very Satisfied	1	7%
Total Responses:	14	

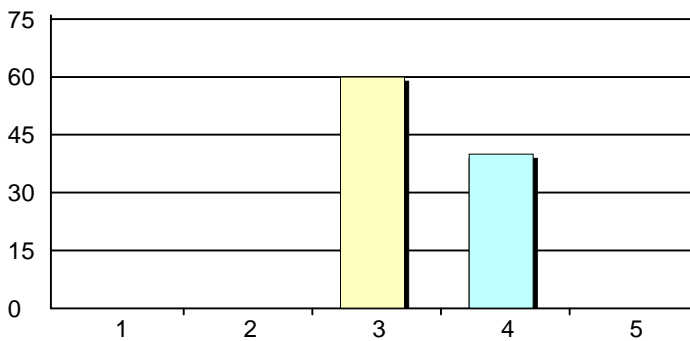
CME Needs Assessment Summary 2017-2018

53. Pulmonary Conference



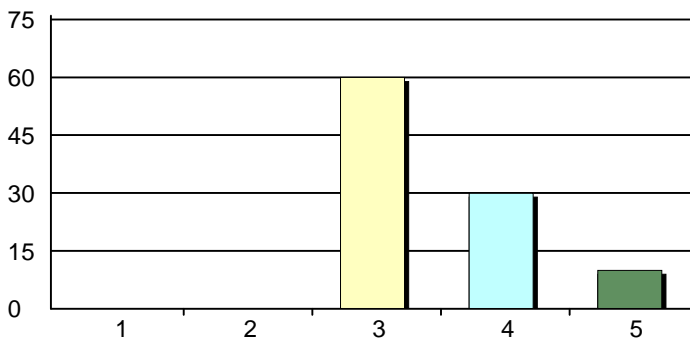
1. Very Dissatisfied	0	0%
2. Dissatisfied	0	0%
3. Neutral	7	70%
4. Satisfied	3	30%
5. Very Satisfied	0	0%
Total Responses:	10	

54. Pulmonary Journal Club



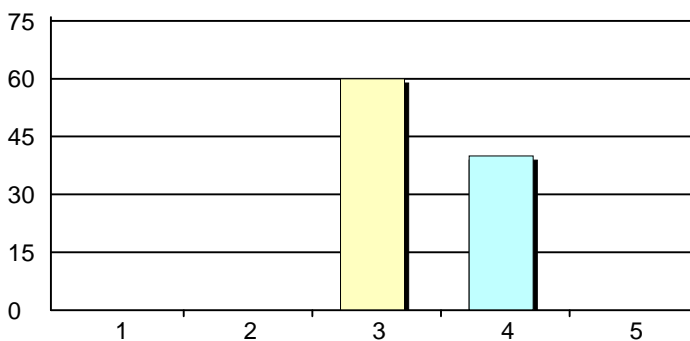
1. Very Dissatisfied	0	0%
2. Dissatisfied	0	0%
3. Neutral	6	60%
4. Satisfied	4	40%
5. Very Satisfied	0	0%
Total Responses:	10	

55. Pulmonary Pathology



1. Very Dissatisfied	0	0%
2. Dissatisfied	0	0%
3. Neutral	6	60%
4. Satisfied	3	30%
5. Very Satisfied	1	10%
Total Responses:	10	

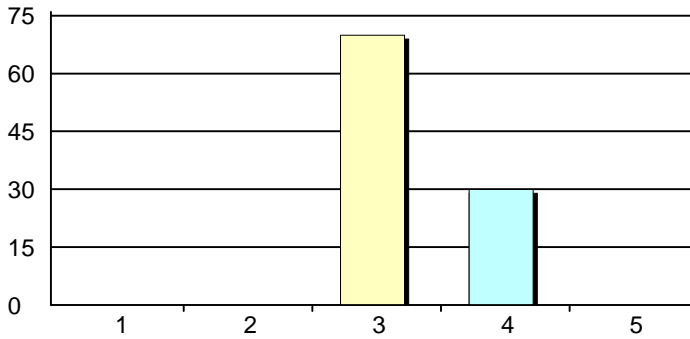
56. Pulmonary Research



1. Very Dissatisfied	0	0%
2. Dissatisfied	0	0%
3. Neutral	6	60%
4. Satisfied	4	40%
5. Very Satisfied	0	0%
Total Responses:	10	

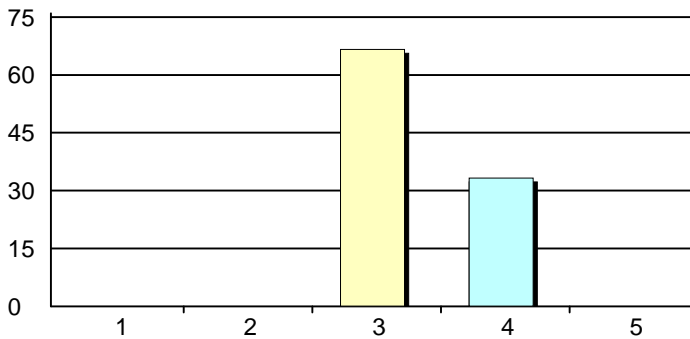
CME Needs Assessment Summary 2017-2018

57. Radiology Conference



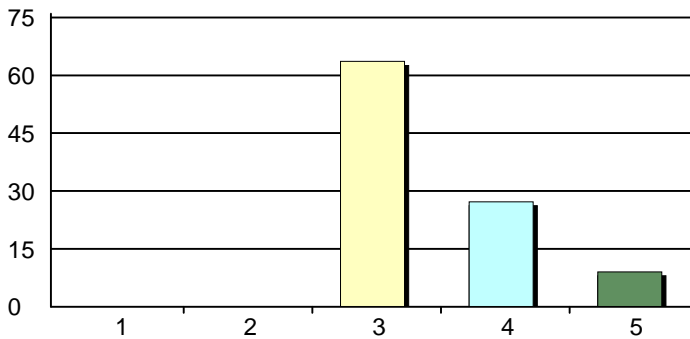
1. Very Dissatisfied	0	0%
2. Dissatisfied	0	0%
3. Neutral	7	70%
4. Satisfied	3	30%
5. Very Satisfied	0	0%
Total Responses:	10	

58. Spine/Neuroscience



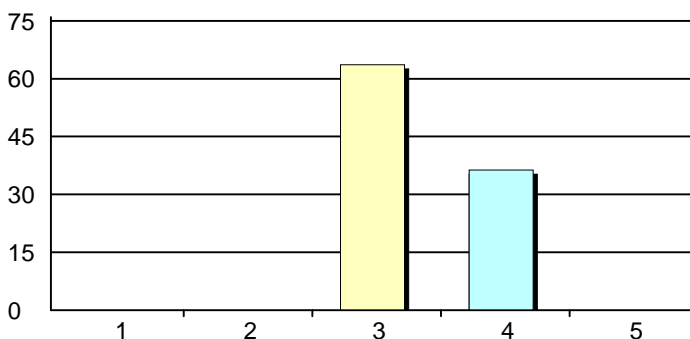
1. Very Dissatisfied	0	0%
2. Dissatisfied	0	0%
3. Neutral	6	67%
4. Satisfied	3	33%
5. Very Satisfied	0	0%
Total Responses:	9	

59. Surgical Grand Rounds



1. Very Dissatisfied	0	0%
2. Dissatisfied	0	0%
3. Neutral	7	64%
4. Satisfied	3	27%
5. Very Satisfied	1	9%
Total Responses:	11	

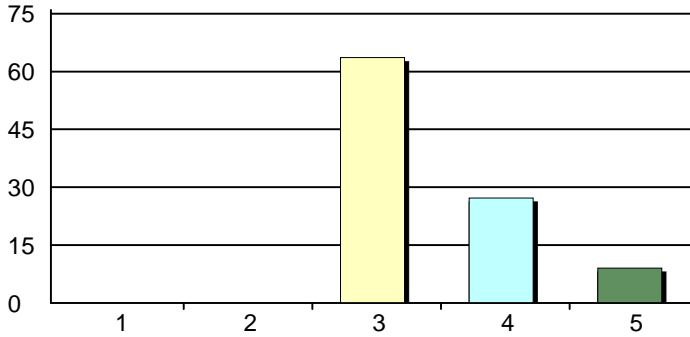
60. Surgical GI Club



1. Very Dissatisfied	0	0%
2. Dissatisfied	0	0%
3. Neutral	7	64%
4. Satisfied	4	36%
5. Very Satisfied	0	0%
Total Responses:	11	

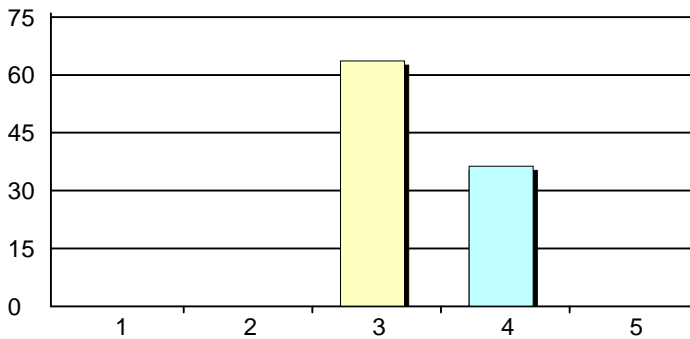
CME Needs Assessment Summary 2017-2018

61. Surgical Perioperative



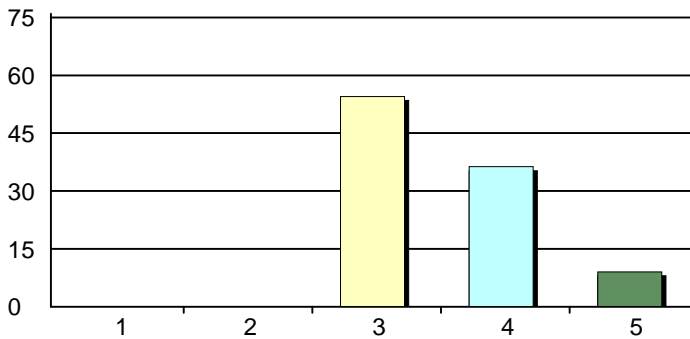
1. Very Dissatisfied	0	0%
2. Dissatisfied	0	0%
3. Neutral	7	64%
4. Satisfied	3	27%
5. Very Satisfied	1	9%
Total Responses:	11	

62. Surgical Peds Trauma



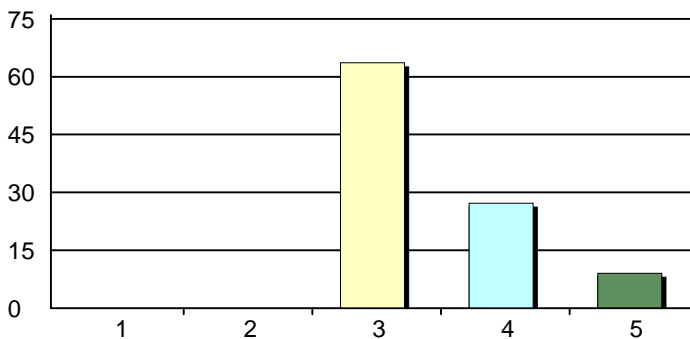
1. Very Dissatisfied	0	0%
2. Dissatisfied	0	0%
3. Neutral	7	64%
4. Satisfied	4	36%
5. Very Satisfied	0	0%
Total Responses:	11	

63. Surgical Trauma



1. Very Dissatisfied	0	0%
2. Dissatisfied	0	0%
3. Neutral	6	55%
4. Satisfied	4	36%
5. Very Satisfied	1	9%
Total Responses:	11	

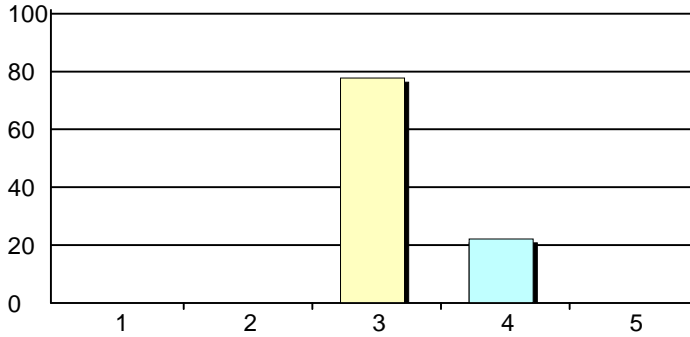
64. Surgical M&M



1. Very Dissatisfied	0	0%
2. Dissatisfied	0	0%
3. Neutral	7	64%
4. Satisfied	3	27%
5. Very Satisfied	1	9%
Total Responses:	11	

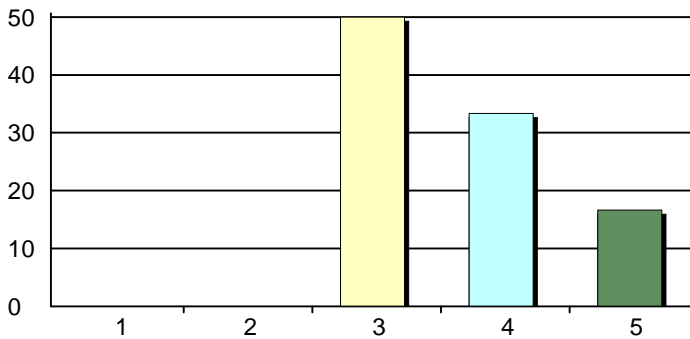
CME Needs Assessment Summary 2017-2018

65. Surgical Rounds (VAMC)



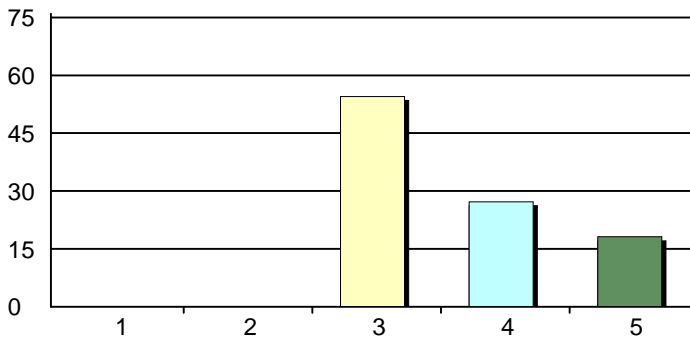
1. Very Dissatisfied	0	0%
2. Dissatisfied	0	0%
3. Neutral	7	78%
4. Satisfied	2	22%
5. Very Satisfied	0	0%
Total Responses:	9	

66. Tumor CHH



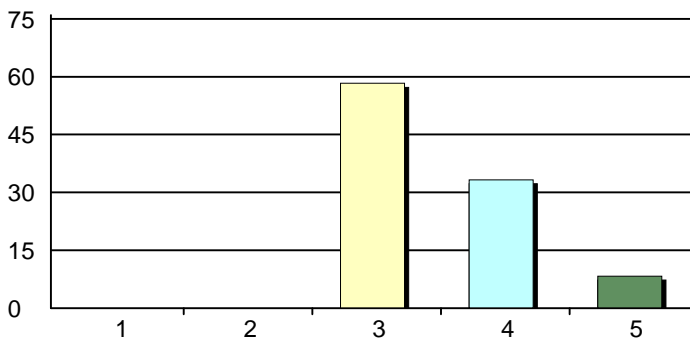
1. Very Dissatisfied	0	0%
2. Dissatisfied	0	0%
3. Neutral	6	50%
4. Satisfied	4	33%
5. Very Satisfied	2	17%
Total Responses:	12	

67. Tumor CHH-Breast



1. Very Dissatisfied	0	0%
2. Dissatisfied	0	0%
3. Neutral	6	55%
4. Satisfied	3	27%
5. Very Satisfied	2	18%
Total Responses:	11	

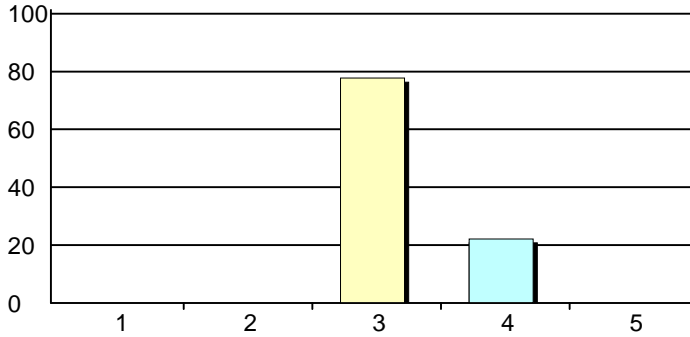
68. Tumor CHH-Lung



1. Very Dissatisfied	0	0%
2. Dissatisfied	0	0%
3. Neutral	7	58%
4. Satisfied	4	33%
5. Very Satisfied	1	8%
Total Responses:	12	

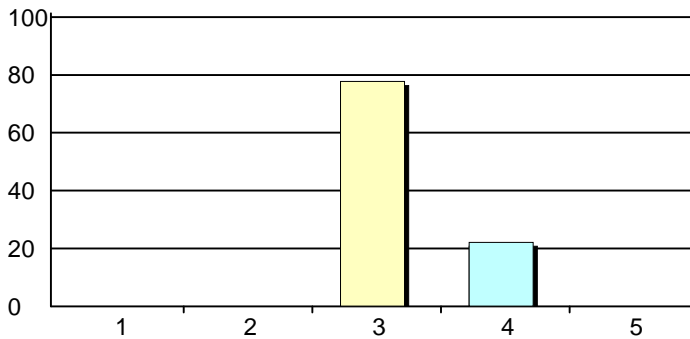
CME Needs Assessment Summary 2017-2018

69. Tumor SMMC



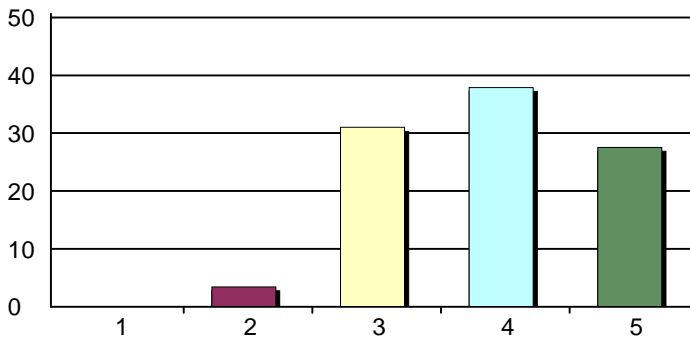
1. Very Dissatisfied	0	0%
2. Dissatisfied	0	0%
3. Neutral	7	78%
4. Satisfied	2	22%
5. Very Satisfied	0	0%
Total Responses:	9	

70. Tumor VAMC



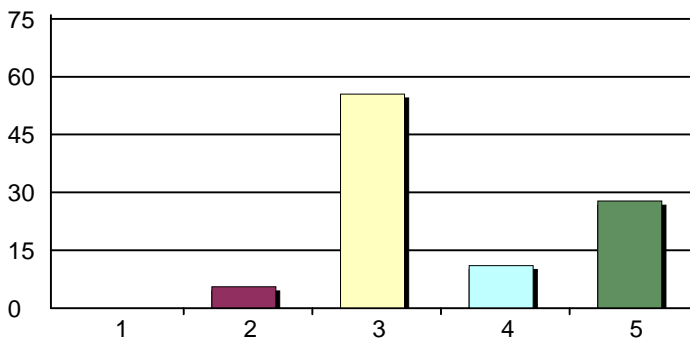
1. Very Dissatisfied	0	0%
2. Dissatisfied	0	0%
3. Neutral	7	78%
4. Satisfied	2	22%
5. Very Satisfied	0	0%
Total Responses:	9	

71. Research Day Conference



1. Very Dissatisfied	0	0%
2. Dissatisfied	1	3%
3. Neutral	9	31%
4. Satisfied	11	38%
5. Very Satisfied	8	28%
Total Responses:	29	

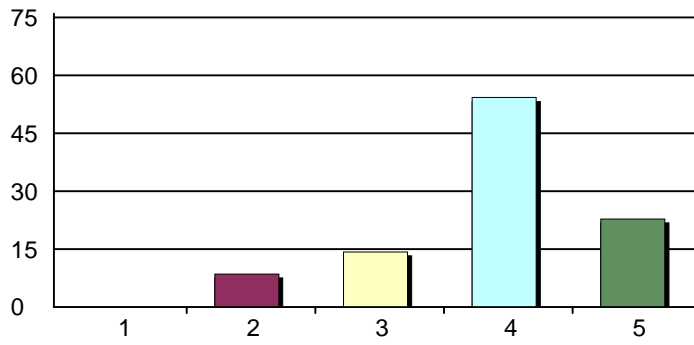
72. Alumni Homecoming Conference



1. Very Dissatisfied	0	0%
2. Dissatisfied	1	6%
3. Neutral	10	56%
4. Satisfied	2	11%
5. Very Satisfied	5	28%
Total Responses:	18	

CME Needs Assessment Summary 2017-2018

73. Risk



1. Very Dissatisfied
2. Dissatisfied
3. Neutral
4. Satisfied
5. Very Satisfied
Total Responses:

0 0%
3 9%
5 14%
19 54%
8 23%
35