

CME Needs Assessment 2018-2019

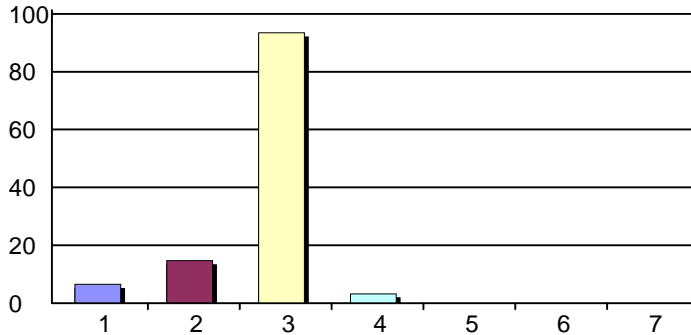
Survey Summary

Creation Date: 2/1/2019

Time Interval: 8/22/2018 to 1/8/2019

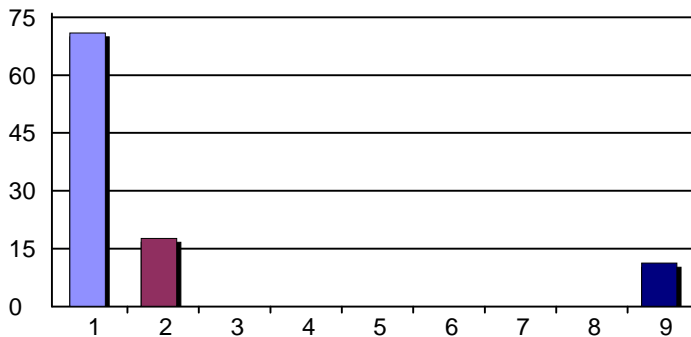
Total Respondents: 62

1. What is the best way for CME to communicate with you regarding future CME activities that might be of interest to you?



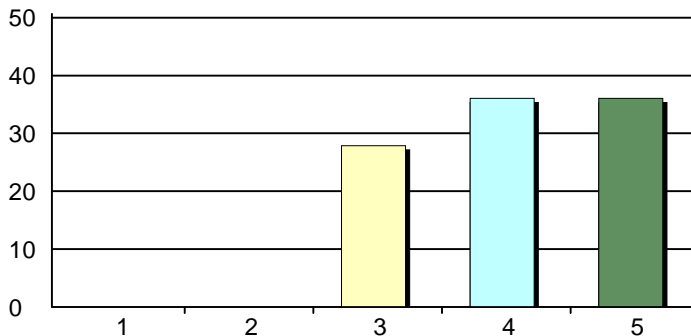
1. Brochure in the mail	4	7%
2. Text message	9	15%
3. E-mail message	57	93%
4. Cell phone	2	3%
5. Office phone	0	0%
6. Twitter	0	0%
7. Facebook	0	0%
Total Responses:	61	

3. You are a.....



1. Physician	44	71%
2. Resident	11	18%
3. Pharmacist	0	0%
4. Nurse	0	0%
5. Basic Scientist	0	0%
6. Medical Student	0	0%
7. Medical Staff	0	0%
8. Dentist	0	0%
9. Other health professional (please specify below)	7	11%
Total Responses:	62	
Mean: 2.08	Standard Deviation: 2.52	

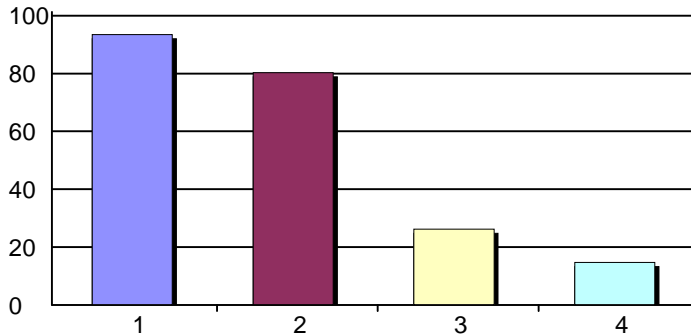
5. Please indicate your birth year.



1. 1925-1933	0	0%
2. 1934-1946	0	0%
3. 1947-1964	17	28%
4. 1965-1980	22	36%
5. 1981 and beyond	22	36%
Total Responses:	61	
Mean: 4.08	Standard Deviation: 0.80	

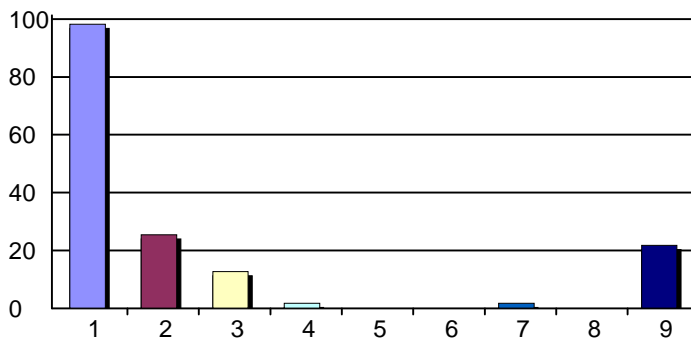
CME Needs Assessment 2018-2019 Survey Summary

6. Where are you credentialed?



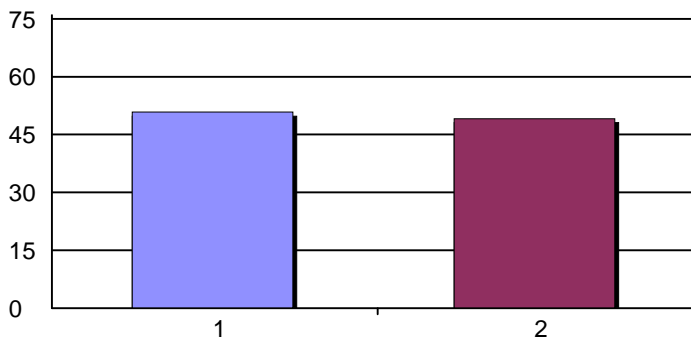
1. Marshall Health	57	93%
2. CHH	49	80%
3. SMMC	16	26%
4. VAMC	9	15%
Total Responses:	61	

7. Where are you licensed?



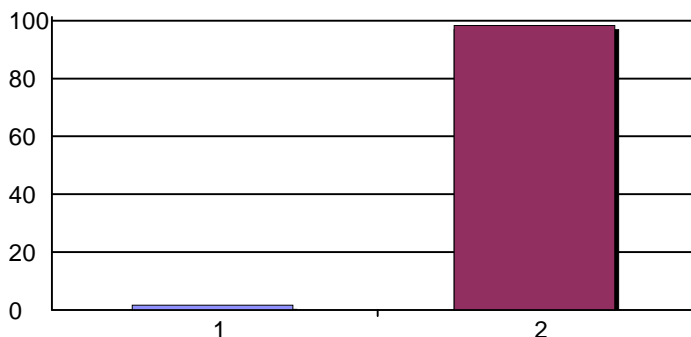
1. West Virginia	54	98%
2. Ohio	14	25%
3. Kentucky	7	13%
4. Virginia	1	2%
5. Maryland	0	0%
6. Pennsylvania	0	0%
7. New York	1	2%
8. North Carolina	0	0%
9. Other state (please specify next page)	12	22%
Total Responses:	55	

9. Have you completed a CME Disclosure Form this year? If No, go to <http://jcesom.marshall.edu/continuing-medical-education/policies-forms/> and complete. Return your form to your department administrator or CME HSL 2403M.



1. Yes	30	51%
2. No	29	49%
Total Responses:	59	
Mean: 1.49	Standard Deviation: 0.50	

10. Do you have any Conflicts of Interest that would prevent you from participating in planned events? If Yes, explain on your Disclosure form and submit to CME, HSL 2403M.

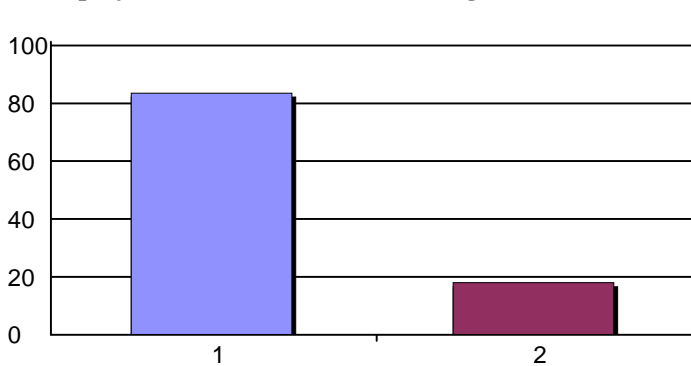


1. Yes	1	2%
2. No	60	98%
Total Responses:	61	
Mean: 1.98	Standard Deviation: 0.13	

CME Needs Assessment 2018-2019

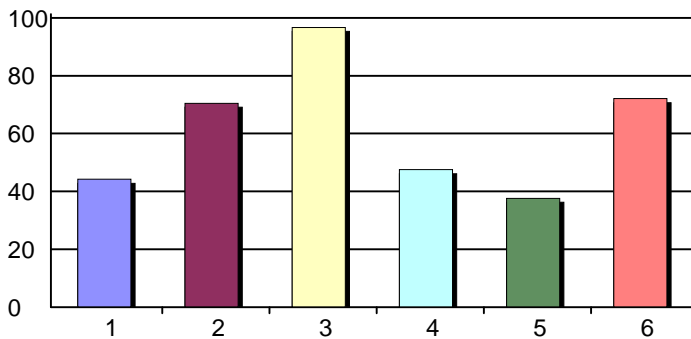
Survey Summary

11. Have you completed the 3 hour WV licensure requirement on Drug Diversion or Prescribing of Controlled Substances? If you answered No. The Drug Diversion training is available on the CME website via the link on the Events Calendar. <http://jcesom.marshall.edu/continuing-medical-education/events-calendar/>



1. Yes	51	84%
2. NO	11	18%
Total Responses:	61	

12. How do you utilize CME? (Indicate all that apply)

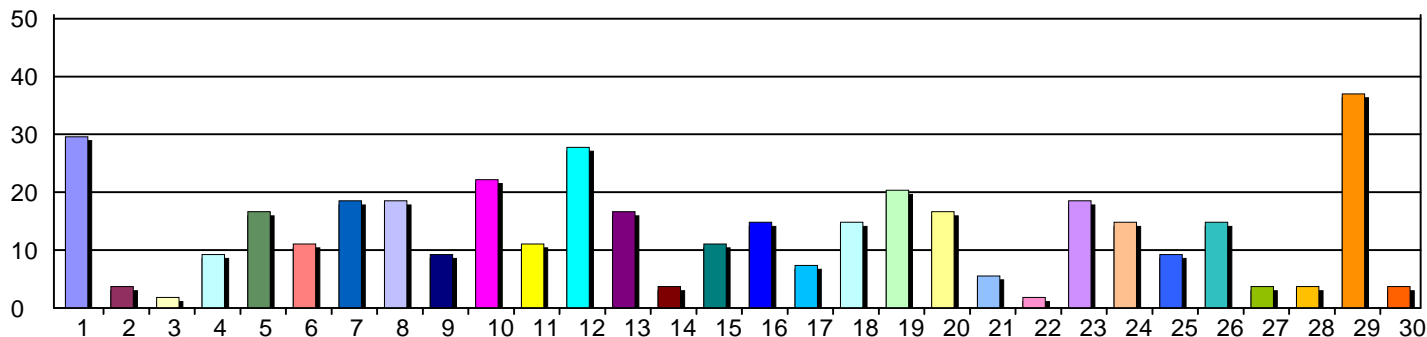


1. Provide information to patients	27	44%
2. Put new knowledge into practice	43	70%
3. To stay up-to-date	59	97%
4. Better understand indications/contraindication...	29	48%
5. Share the information with colleagues	23	38%
6. Maintain my state license	44	72%
Total Responses:	61	

CME Needs Assessment 2018-2019

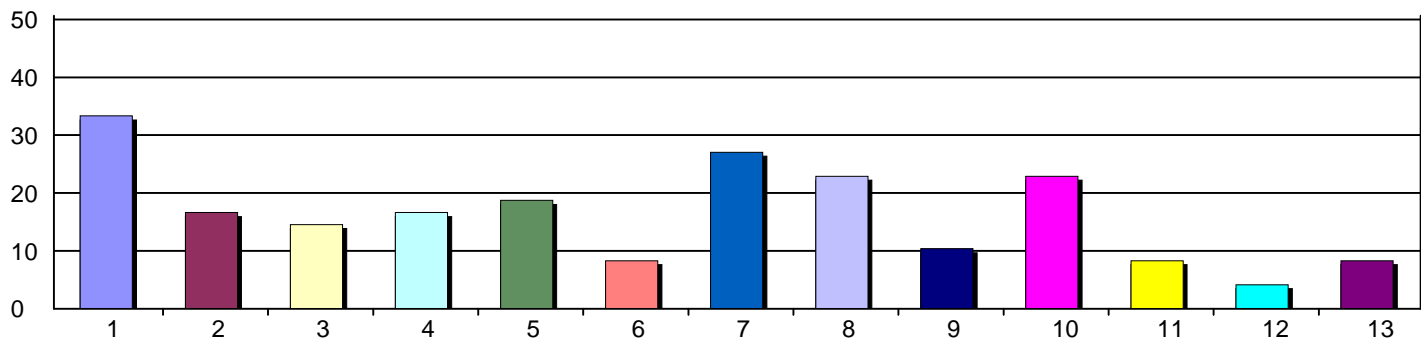
Survey Summary

14. What areas of CME would best meet your educational needs?



Total Responses: 54

15. Continuing - What additional areas of CME would best meet your educational needs?

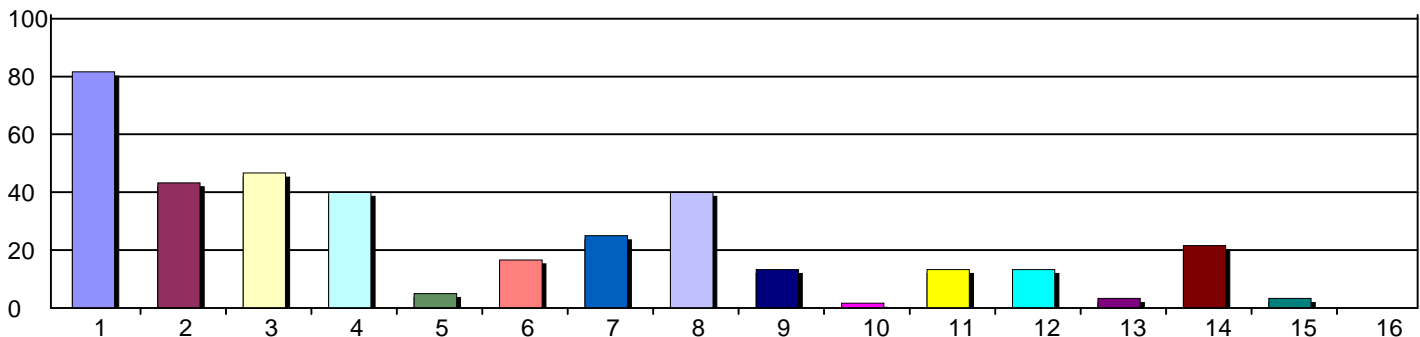


Total Responses: 48

CME Needs Assessment 2018-2019

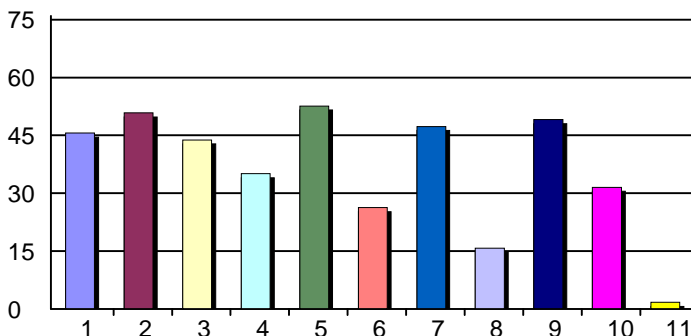
Survey Summary

17. What type CME is the most effective in helping you apply CME learning in your clinical practice?



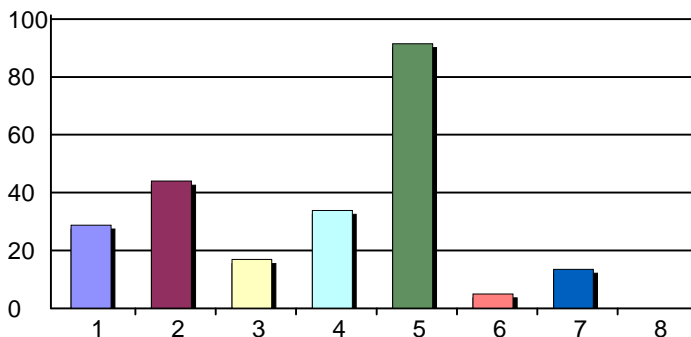
1. Grand Rounds	49	82%	9. Printed enduring materials	8	13%
2. Formal live, didactic lectures	26	43%	10. CDs audio only	1	2%
3. CME on the Internet	28	47%	11. Videoconference or teleconference	8	13%
4. Journals and texts	24	40%	12. Online literature searches	8	13%
5. CME via DVD	3	5%	13. Web X	2	3%
6. Small group discussions	10	17%	14. Local medical meetings	13	22%
7. Hands-on workshop	15	25%	15. Local association meetings	2	3%
8. National association meetings	24	40%	16. Other (please specify below)	0	0%
				Total Responses:	60

20. Which of these items provide the greatest interest in your selection of CME activities?



1. New diagnostic approaches	26	46%
2. New drugs and/or drug therapies	29	51%
3. Practice management	25	44%
4. New procedures	20	35%
5. New therapeutic and management approaches	30	53%
6. New medical devices	15	26%
7. Obtain CME credits to maintain license	27	47%
8. Network with colleagues	9	16%
9. Refresher on common clinical problems	28	49%
10. Refresher on difficult clinical problems	18	32%
11. Other (please specify below)	1	2%
		Total Responses:
		57

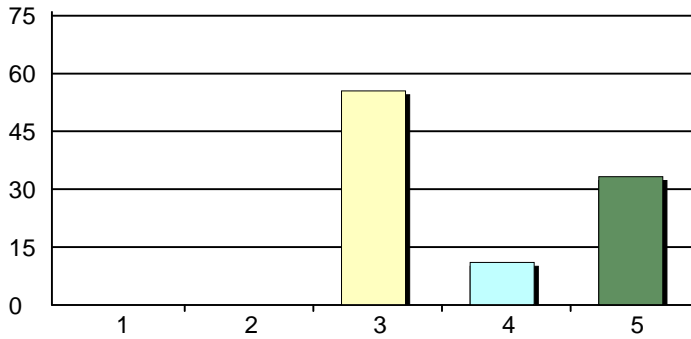
22. What sources help you identify CME activities?



1. Direct mail	17	29%
2. Internet sites	26	44%
3. Information shared with colleagues	10	17%
4. Organizational publications and/or journals	20	34%
5. E-mail messages	54	92%
6. Government publications	3	5%
7. Text messages	8	14%
8. Other (please specify below)	0	0%
		Total Responses:
		59

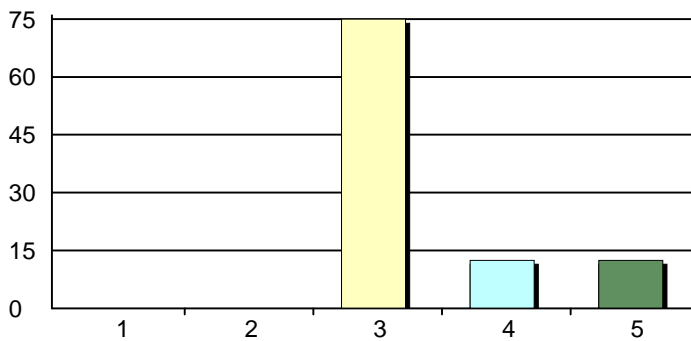
CME Needs Assessment 2018-2019 Survey Summary

25. Breast Cancer Conference



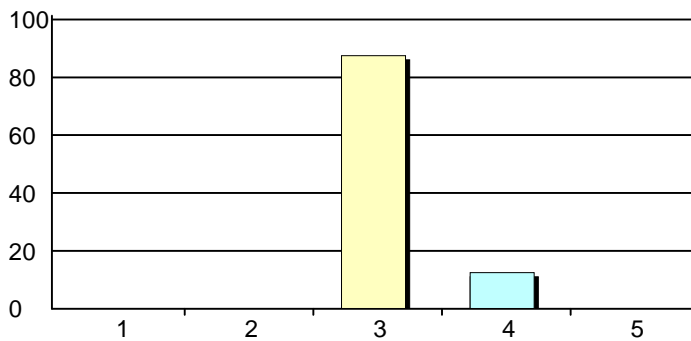
1. Very Dissatisfied	0	0%
2. Dissatisfied	0	0%
3. Neutral	5	56%
4. Satisfied	1	11%
5. Very Satisfied	3	33%
Total Responses:	9	

26. Cardiology Basic Science



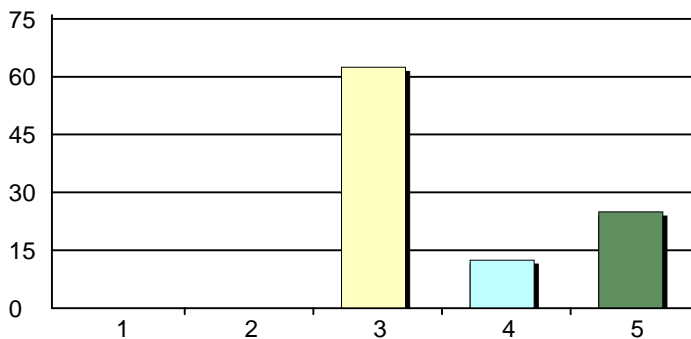
1. Very Dissatisfied	0	0%
2. Dissatisfied	0	0%
3. Neutral	6	75%
4. Satisfied	1	12%
5. Very Satisfied	1	12%
Total Responses:	8	

27. Cardiology Cath



1. Very Dissatisfied	0	0%
2. Dissatisfied	0	0%
3. Neutral	7	88%
4. Satisfied	1	12%
5. Very Satisfied	0	0%
Total Responses:	8	

28. Cardiology Journal

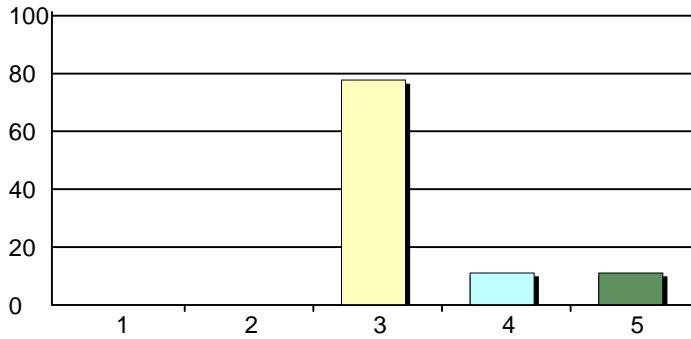


1. Very Dissatisfied	0	0%
2. Dissatisfied	0	0%
3. Neutral	5	62%
4. Satisfied	1	12%
5. Very Satisfied	2	25%
Total Responses:	8	

CME Needs Assessment 2018-2019

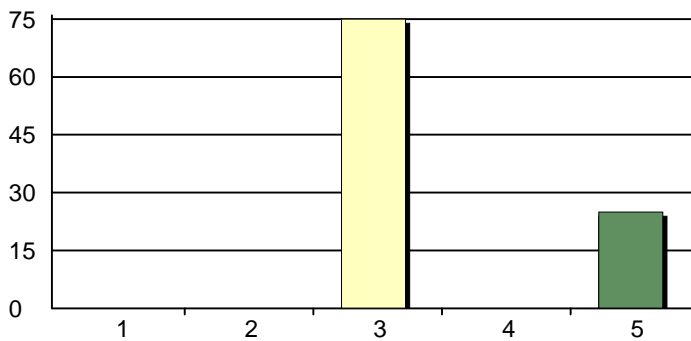
Survey Summary

29. Cardiology Disease M&M/CVT



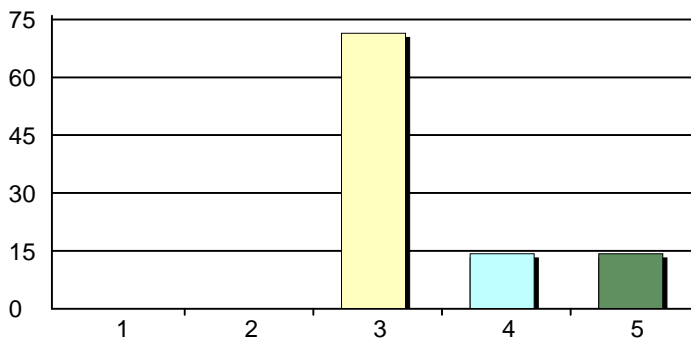
1. Very Dissatisfied	0	0%
2. Dissatisfied	0	0%
3. Neutral	7	78%
4. Satisfied	1	11%
5. Very Satisfied	1	11%
Total Responses:	9	

30. Cardiology Nuclear



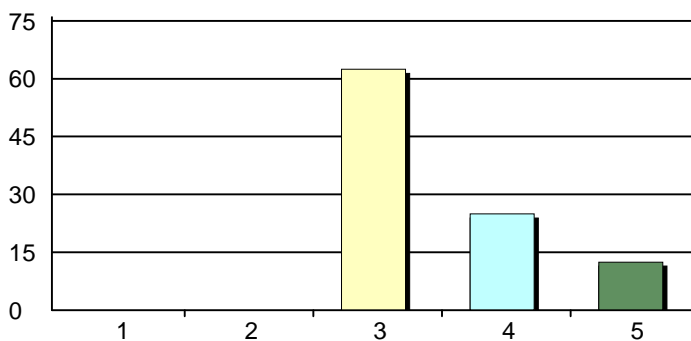
1. Very Dissatisfied	0	0%
2. Dissatisfied	0	0%
3. Neutral	6	75%
4. Satisfied	0	0%
5. Very Satisfied	2	25%
Total Responses:	8	

31. Combined Dermatology Series Conferences-DermPath, Journal Club, Grand Rounds



1. Very Dissatisfied	0	0%
2. Dissatisfied	0	0%
3. Neutral	5	71%
4. Satisfied	1	14%
5. Very Satisfied	1	14%
Total Responses:	7	

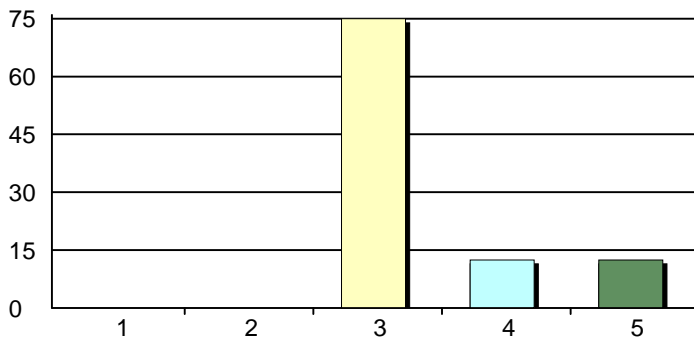
32. ECCO Med Oncology GR & Core Lectures



1. Very Dissatisfied	0	0%
2. Dissatisfied	0	0%
3. Neutral	5	62%
4. Satisfied	2	25%
5. Very Satisfied	1	12%
Total Responses:	8	

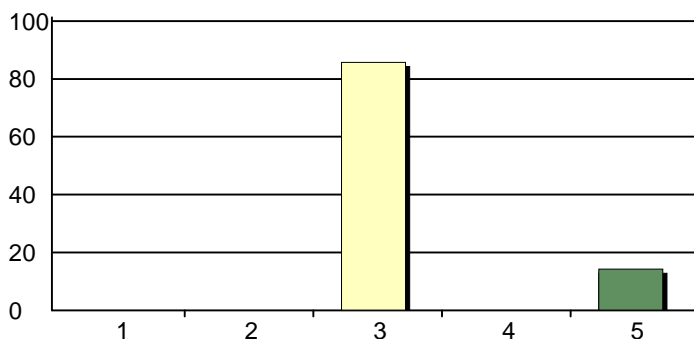
CME Needs Assessment 2018-2019 Survey Summary

33. Echo Conference



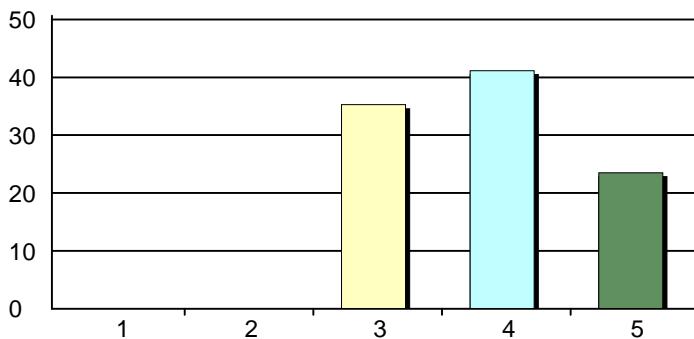
1. Very Dissatisfied	0	0%
2. Dissatisfied	0	0%
3. Neutral	6	75%
4. Satisfied	1	12%
5. Very Satisfied	1	12%
Total Responses:	8	

34. EKG Cardiology Conference



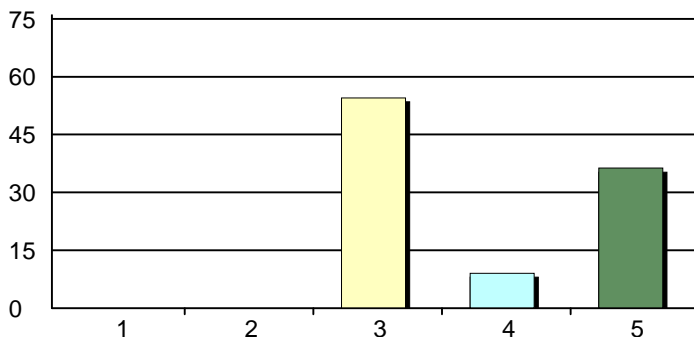
1. Very Dissatisfied	0	0%
2. Dissatisfied	0	0%
3. Neutral	6	86%
4. Satisfied	0	0%
5. Very Satisfied	1	14%
Total Responses:	7	

35. Family Practice Grand Rounds



1. Very Dissatisfied	0	0%
2. Dissatisfied	0	0%
3. Neutral	6	35%
4. Satisfied	7	41%
5. Very Satisfied	4	24%
Total Responses:	17	

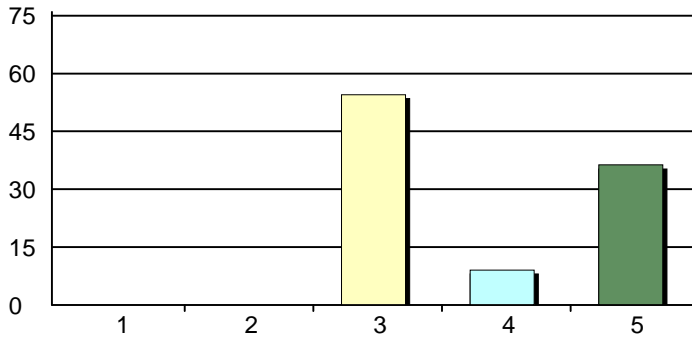
36. Fetal Anomalies-OB



1. Very Dissatisfied	0	0%
2. Dissatisfied	0	0%
3. Neutral	6	55%
4. Satisfied	1	9%
5. Very Satisfied	4	36%
Total Responses:	11	

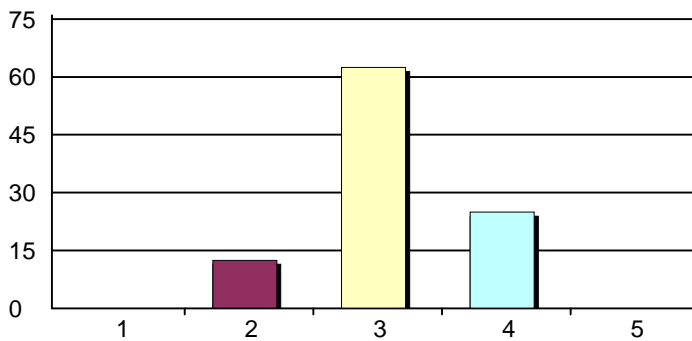
CME Needs Assessment 2018-2019 Survey Summary

37. Gynecology Conference M&M



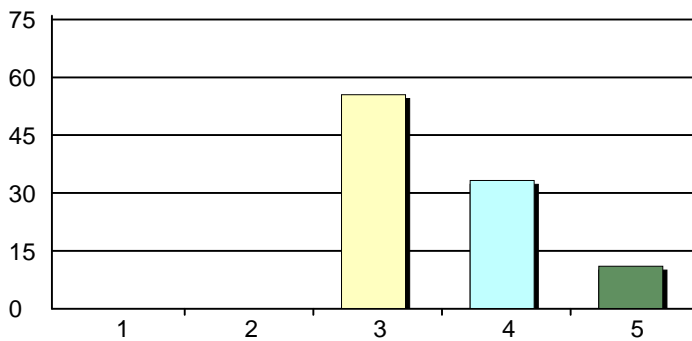
1. Very Dissatisfied	0	0%
2. Dissatisfied	0	0%
3. Neutral	6	55%
4. Satisfied	1	9%
5. Very Satisfied	4	36%
Total Responses:	11	

38. Holzer Med Ctr - Marshall Tuesdays



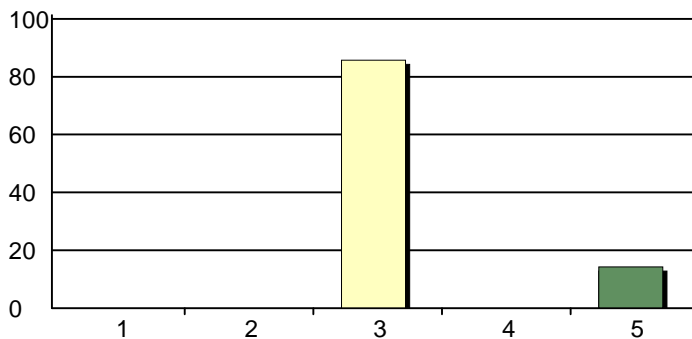
1. Very Dissatisfied	0	0%
2. Dissatisfied	1	12%
3. Neutral	5	62%
4. Satisfied	2	25%
5. Very Satisfied	0	0%
Total Responses:	8	

39. Lung Cancer Conference



1. Very Dissatisfied	0	0%
2. Dissatisfied	0	0%
3. Neutral	5	56%
4. Satisfied	3	33%
5. Very Satisfied	1	11%
Total Responses:	9	

40. Marshall Cardiology-Endocrinology ECHO Program

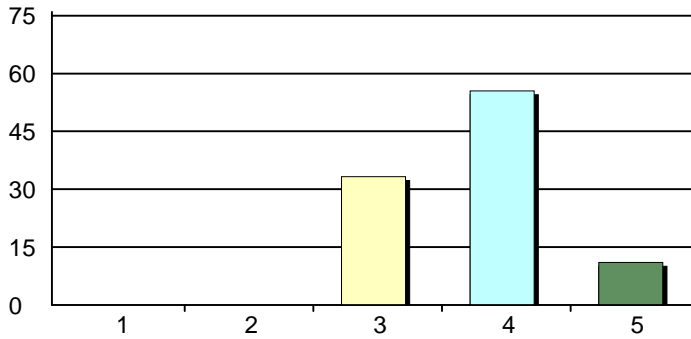


1. Very Dissatisfied	0	0%
2. Dissatisfied	0	0%
3. Neutral	6	86%
4. Satisfied	0	0%
5. Very Satisfied	1	14%
Total Responses:	7	

CME Needs Assessment 2018-2019

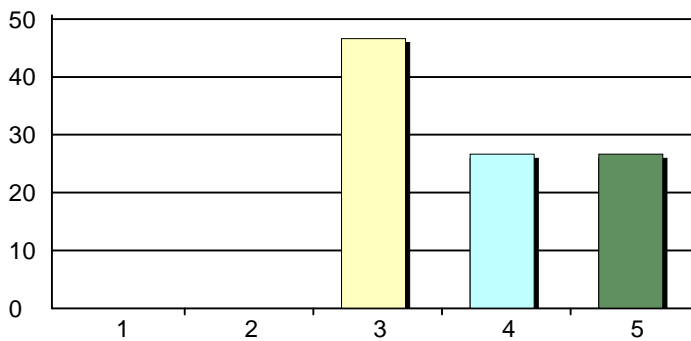
Survey Summary

41. Medical ICU Morbidity and Mortality Review



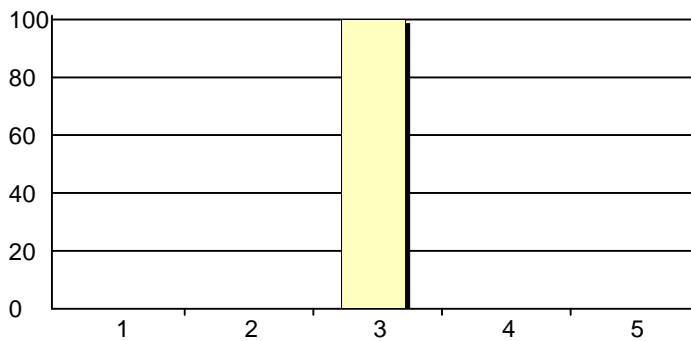
1. Very Dissatisfied	0	0%
2. Dissatisfied	0	0%
3. Neutral	3	33%
4. Satisfied	5	56%
5. Very Satisfied	1	11%
Total Responses:	9	

42. Medical Grand Rounds



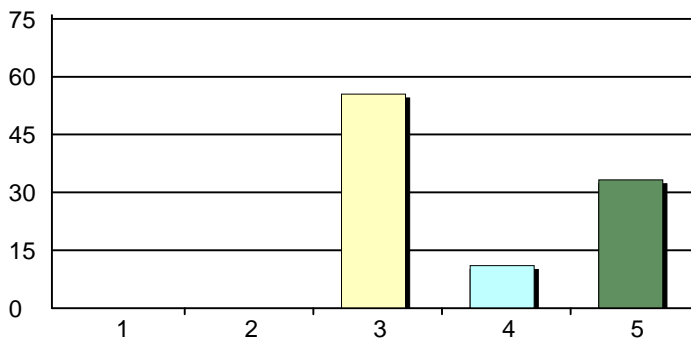
1. Very Dissatisfied	0	0%
2. Dissatisfied	0	0%
3. Neutral	7	47%
4. Satisfied	4	27%
5. Very Satisfied	4	27%
Total Responses:	15	

43. Multi-Institutional Sarcoma Board



1. Very Dissatisfied	0	0%
2. Dissatisfied	0	0%
3. Neutral	6	100%
4. Satisfied	0	0%
5. Very Satisfied	0	0%
Total Responses:	6	

44. Neurology Grand Rounds

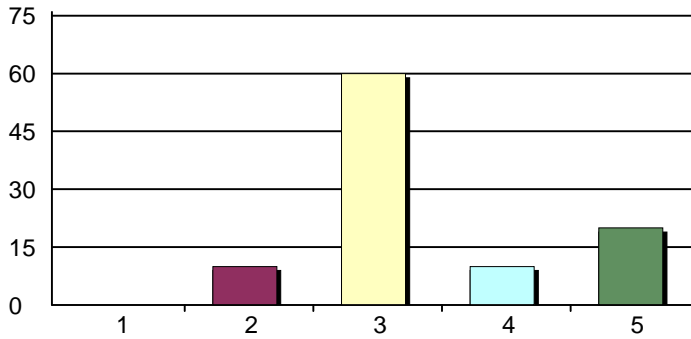


1. Very Dissatisfied	0	0%
2. Dissatisfied	0	0%
3. Neutral	5	56%
4. Satisfied	1	11%
5. Very Satisfied	3	33%
Total Responses:	9	

CME Needs Assessment 2018-2019

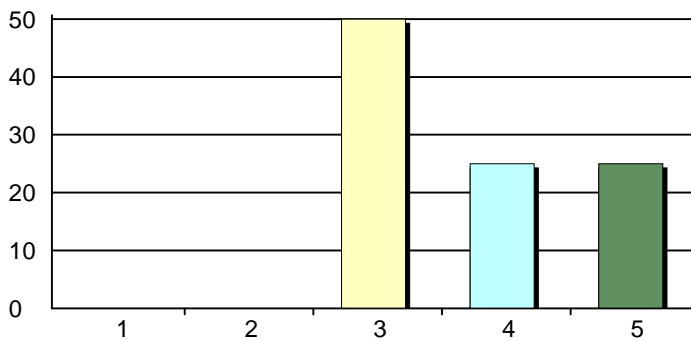
Survey Summary

45. Neuro Surgery



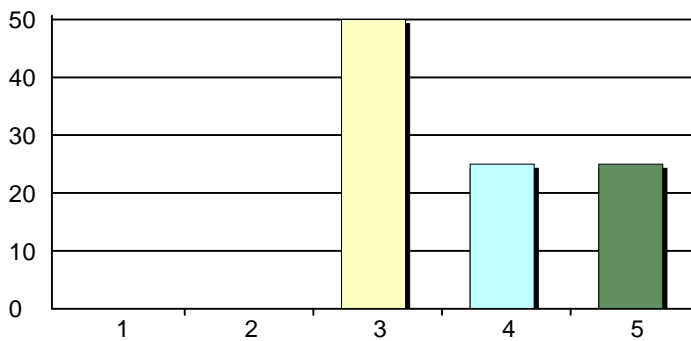
1. Very Dissatisfied	0	0%
2. Dissatisfied	1	10%
3. Neutral	6	60%
4. Satisfied	1	10%
5. Very Satisfied	2	20%
Total Responses:	10	

46. OB/GYN Grand Rounds



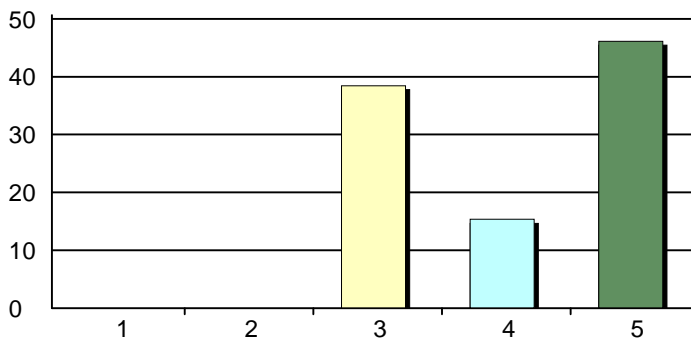
1. Very Dissatisfied	0	0%
2. Dissatisfied	0	0%
3. Neutral	6	50%
4. Satisfied	3	25%
5. Very Satisfied	3	25%
Total Responses:	12	

47. OB/GYN M&M Perinatal



1. Very Dissatisfied	0	0%
2. Dissatisfied	0	0%
3. Neutral	6	50%
4. Satisfied	3	25%
5. Very Satisfied	3	25%
Total Responses:	12	

48. Orthopaedics Grand Rounds

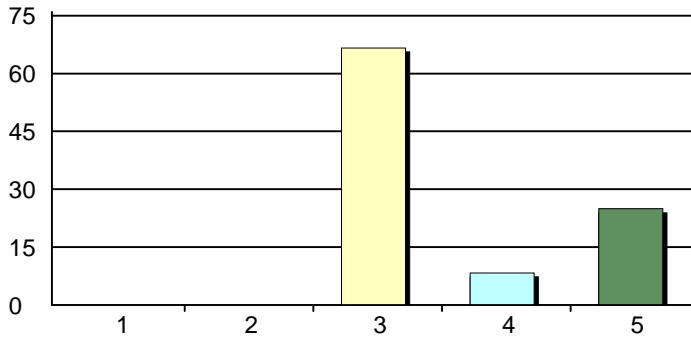


1. Very Dissatisfied	0	0%
2. Dissatisfied	0	0%
3. Neutral	5	38%
4. Satisfied	2	15%
5. Very Satisfied	6	46%
Total Responses:	13	

CME Needs Assessment 2018-2019

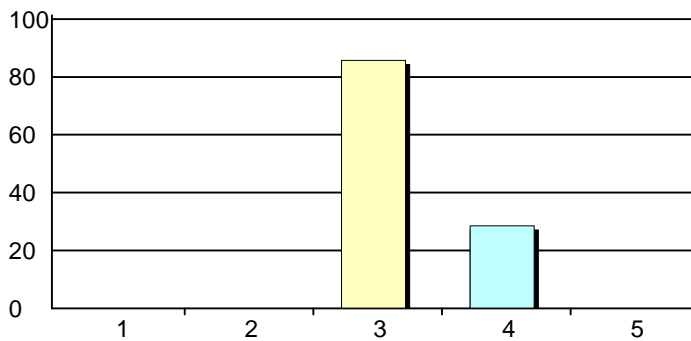
Survey Summary

49. Pediatric Grand Rounds



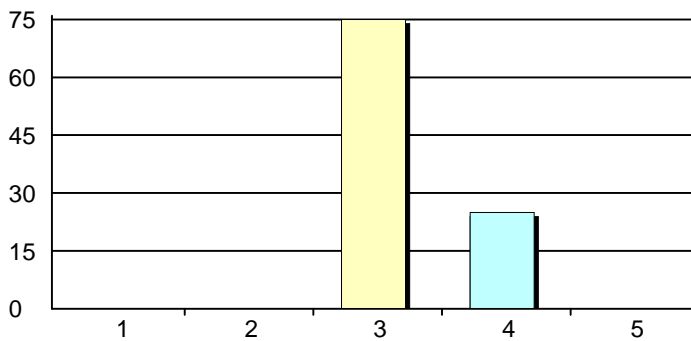
1. Very Dissatisfied	0	0%
2. Dissatisfied	0	0%
3. Neutral	8	67%
4. Satisfied	1	8%
5. Very Satisfied	3	25%
Total Responses:	12	

50. Pediatric Journal Club



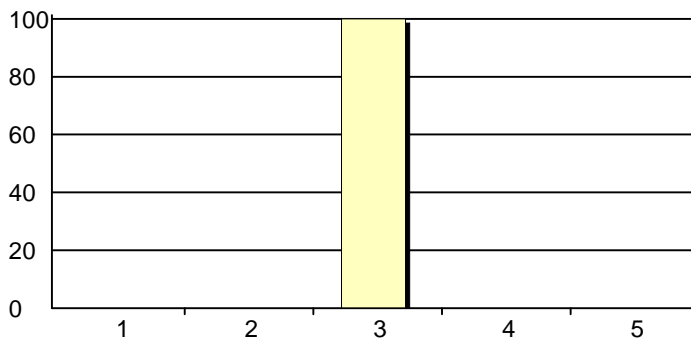
1. Very Dissatisfied	0	0%
2. Dissatisfied	0	0%
3. Neutral	6	86%
4. Satisfied	2	29%
5. Very Satisfied	0	0%
Total Responses:	7	

51. Pediatric Residents Lecture



1. Very Dissatisfied	0	0%
2. Dissatisfied	0	0%
3. Neutral	6	75%
4. Satisfied	2	25%
5. Very Satisfied	0	0%
Total Responses:	8	

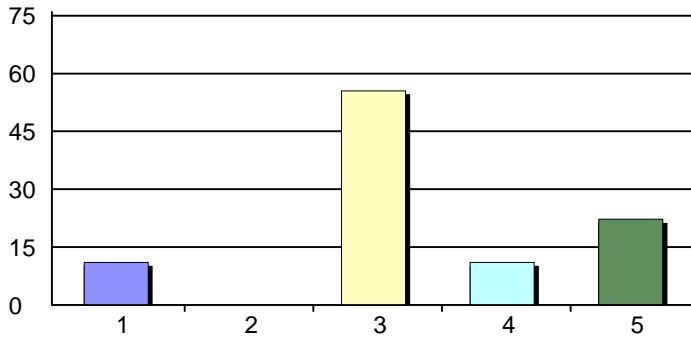
52. Professional Practice Review (CHH)



1. Very Dissatisfied	0	0%
2. Dissatisfied	0	0%
3. Neutral	6	100%
4. Satisfied	0	0%
5. Very Satisfied	0	0%
Total Responses:	6	

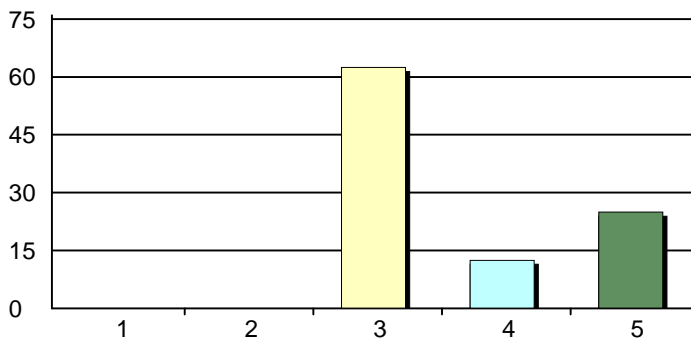
CME Needs Assessment 2018-2019 Survey Summary

53. Psychiatry Grand Rounds



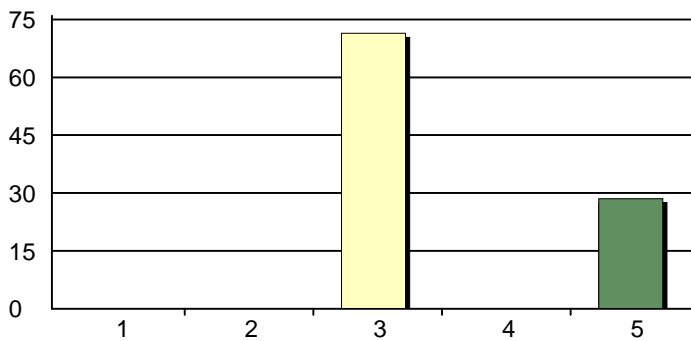
1. Very Dissatisfied	1	11%
2. Dissatisfied	0	0%
3. Neutral	5	56%
4. Satisfied	1	11%
5. Very Satisfied	2	22%
Total Responses:	9	

54. Pulmonary Conference



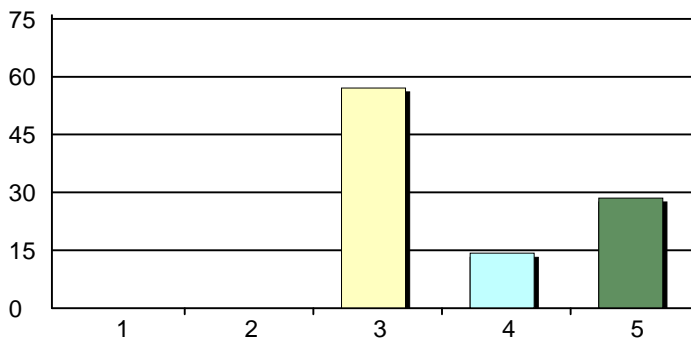
1. Very Dissatisfied	0	0%
2. Dissatisfied	0	0%
3. Neutral	5	62%
4. Satisfied	1	12%
5. Very Satisfied	2	25%
Total Responses:	8	

55. Pulmonary Journal Club



1. Very Dissatisfied	0	0%
2. Dissatisfied	0	0%
3. Neutral	5	71%
4. Satisfied	0	0%
5. Very Satisfied	2	29%
Total Responses:	7	

56. Pulmonary Pathology

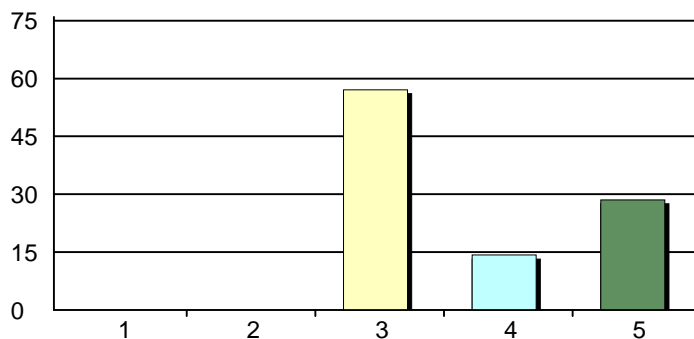


1. Very Dissatisfied	0	0%
2. Dissatisfied	0	0%
3. Neutral	4	57%
4. Satisfied	1	14%
5. Very Satisfied	2	29%
Total Responses:	7	

CME Needs Assessment 2018-2019

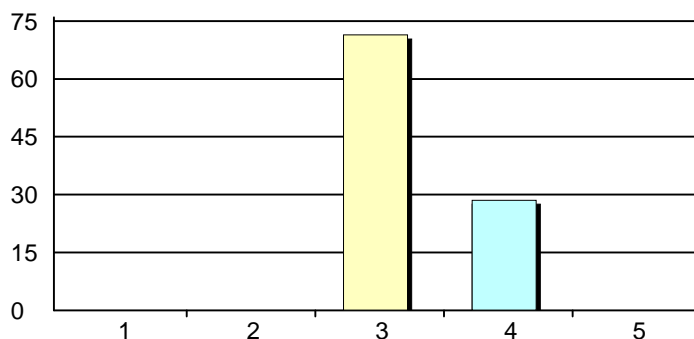
Survey Summary

57. Pulmonary Research



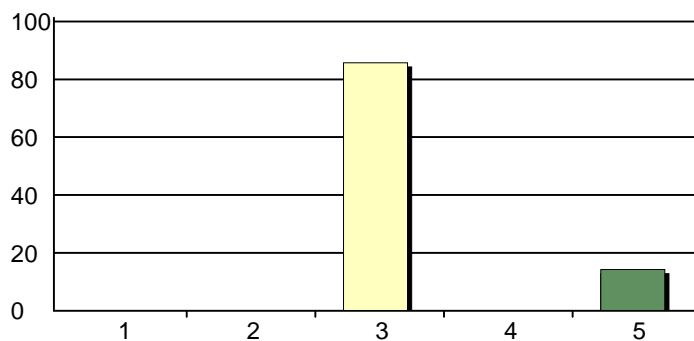
1. Very Dissatisfied	0	0%
2. Dissatisfied	0	0%
3. Neutral	4	57%
4. Satisfied	1	14%
5. Very Satisfied	2	29%
Total Responses:	7	

58. Radiology Conference



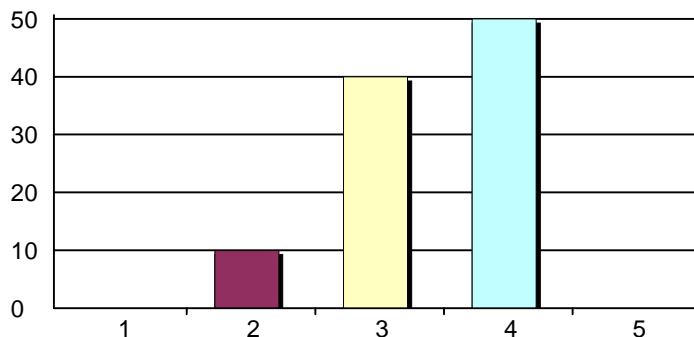
1. Very Dissatisfied	0	0%
2. Dissatisfied	0	0%
3. Neutral	5	71%
4. Satisfied	2	29%
5. Very Satisfied	0	0%
Total Responses:	7	

59. Spine/Neuroscience



1. Very Dissatisfied	0	0%
2. Dissatisfied	0	0%
3. Neutral	6	86%
4. Satisfied	0	0%
5. Very Satisfied	1	14%
Total Responses:	7	

60. Surgical Grand Rounds

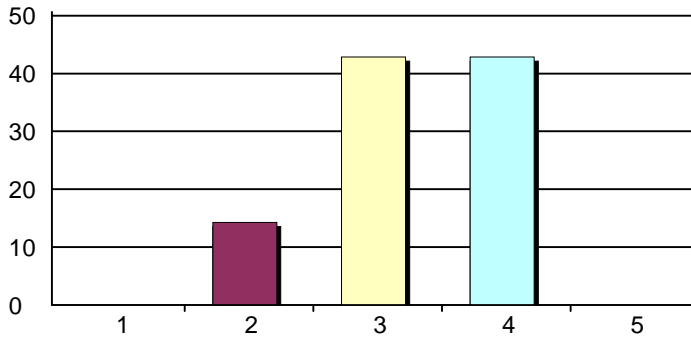


1. Very Dissatisfied	0	0%
2. Dissatisfied	1	10%
3. Neutral	4	40%
4. Satisfied	5	50%
5. Very Satisfied	0	0%
Total Responses:	10	

CME Needs Assessment 2018-2019

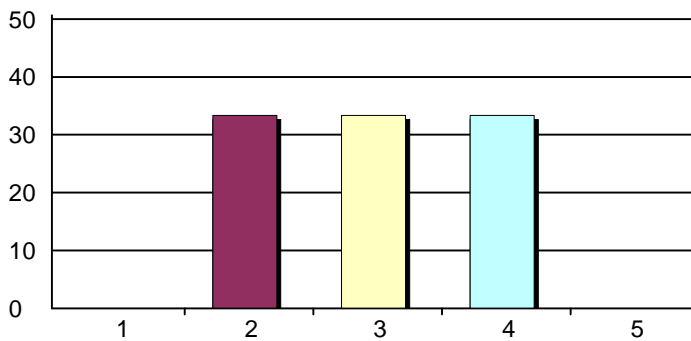
Survey Summary

61. Surgical GI Club



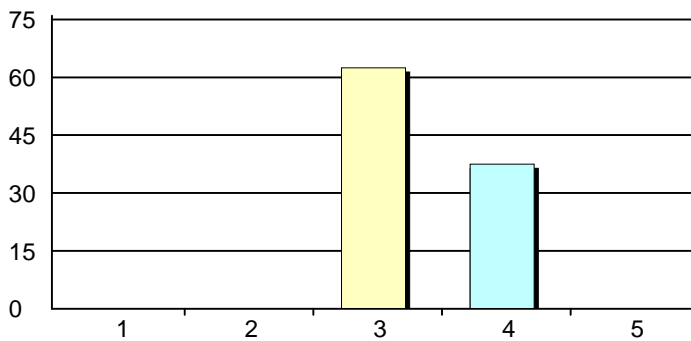
1. Very Dissatisfied	0	0%
2. Dissatisfied	1	14%
3. Neutral	3	43%
4. Satisfied	3	43%
5. Very Satisfied	0	0%
Total Responses:	7	

62. Surgical Perioperative



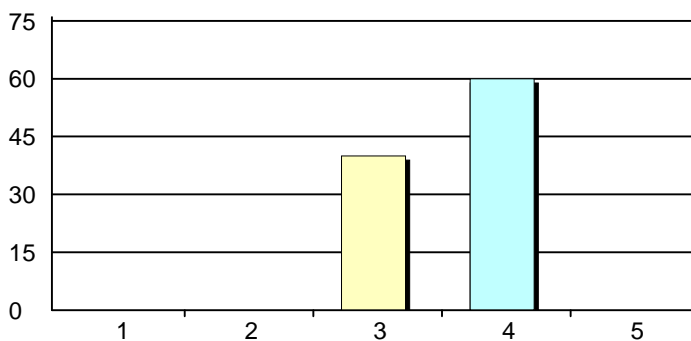
1. Very Dissatisfied	0	0%
2. Dissatisfied	2	33%
3. Neutral	2	33%
4. Satisfied	2	33%
5. Very Satisfied	0	0%
Total Responses:	6	

63. Surgical Peds Trauma



1. Very Dissatisfied	0	0%
2. Dissatisfied	0	0%
3. Neutral	5	62%
4. Satisfied	3	38%
5. Very Satisfied	0	0%
Total Responses:	8	

64. Surgical Trauma

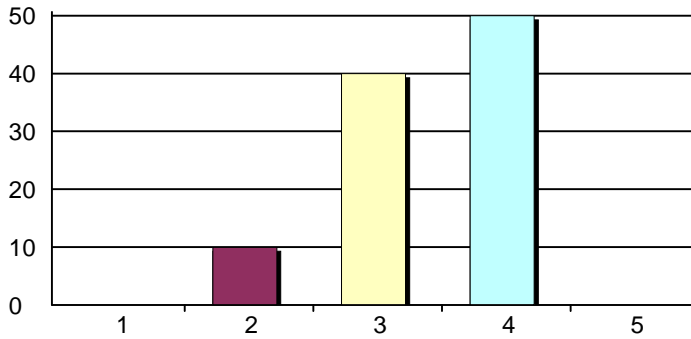


1. Very Dissatisfied	0	0%
2. Dissatisfied	0	0%
3. Neutral	4	40%
4. Satisfied	6	60%
5. Very Satisfied	0	0%
Total Responses:	10	

CME Needs Assessment 2018-2019

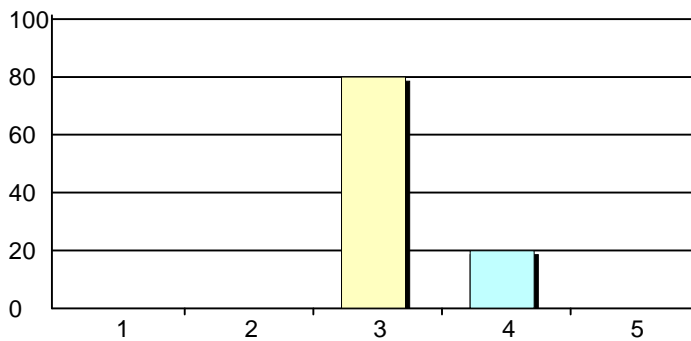
Survey Summary

65. Surgical M&M



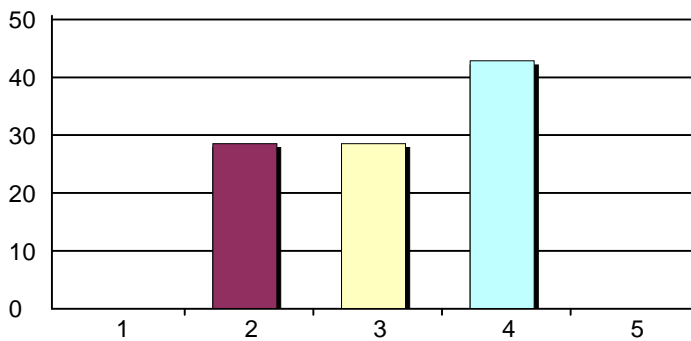
1. Very Dissatisfied	0	0%
2. Dissatisfied	1	10%
3. Neutral	4	40%
4. Satisfied	5	50%
5. Very Satisfied	0	0%
Total Responses:	10	

66. Surgical Rounds (VAMC)



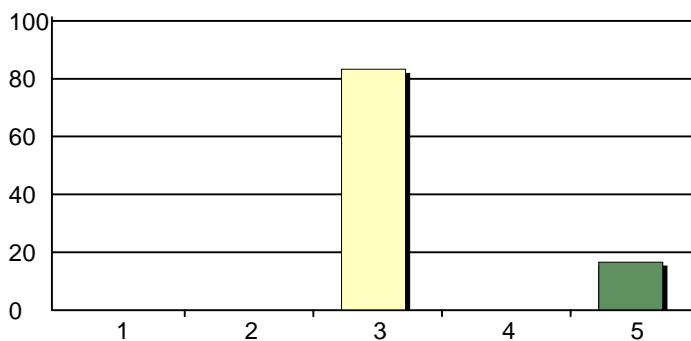
1. Very Dissatisfied	0	0%
2. Dissatisfied	0	0%
3. Neutral	4	80%
4. Satisfied	1	20%
5. Very Satisfied	0	0%
Total Responses:	5	

67. Tumor CHH General



1. Very Dissatisfied	0	0%
2. Dissatisfied	2	29%
3. Neutral	2	29%
4. Satisfied	3	43%
5. Very Satisfied	0	0%
Total Responses:	7	

68. Tumor CHH-Breast

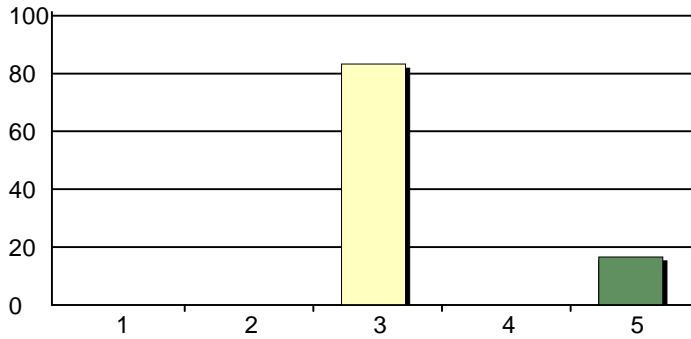


1. Very Dissatisfied	0	0%
2. Dissatisfied	0	0%
3. Neutral	5	83%
4. Satisfied	0	0%
5. Very Satisfied	1	17%
Total Responses:	6	

CME Needs Assessment 2018-2019

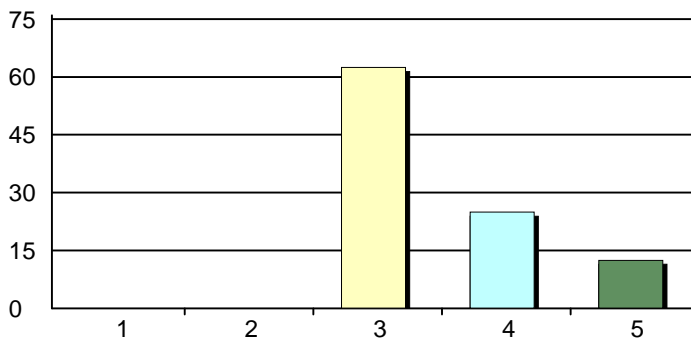
Survey Summary

69. Tumor CHH-Lung



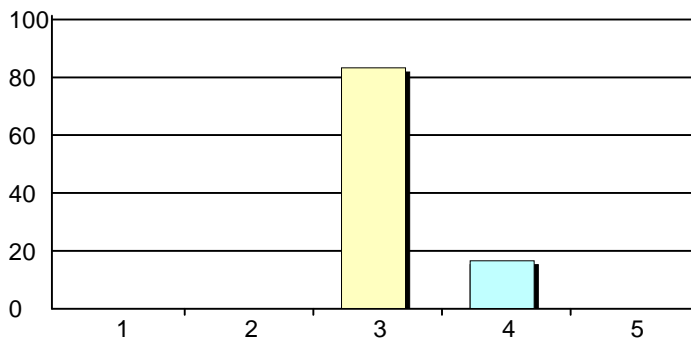
1. Very Dissatisfied	0	0%
2. Dissatisfied	0	0%
3. Neutral	5	83%
4. Satisfied	0	0%
5. Very Satisfied	1	17%
Total Responses:	6	

70. Tumor SMMC



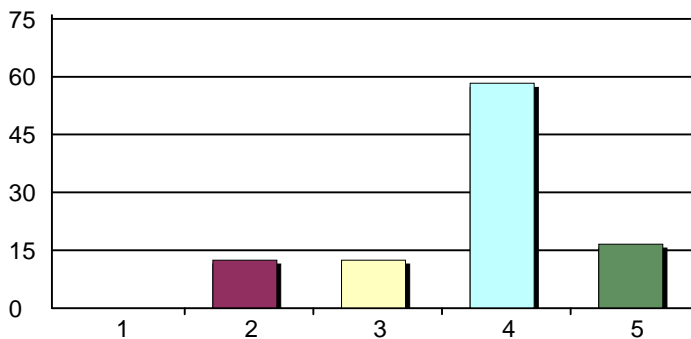
1. Very Dissatisfied	0	0%
2. Dissatisfied	0	0%
3. Neutral	5	62%
4. Satisfied	2	25%
5. Very Satisfied	1	12%
Total Responses:	8	

71. Tumor VAMC



1. Very Dissatisfied	0	0%
2. Dissatisfied	0	0%
3. Neutral	5	83%
4. Satisfied	1	17%
5. Very Satisfied	0	0%
Total Responses:	6	

72. Research Day Conference

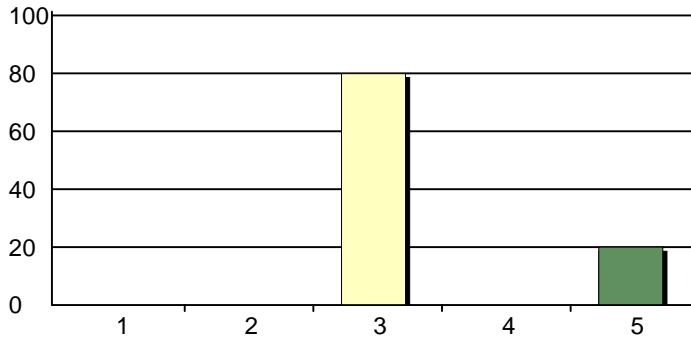


1. Very Dissatisfied	0	0%
2. Dissatisfied	3	12%
3. Neutral	3	12%
4. Satisfied	14	58%
5. Very Satisfied	4	17%
Total Responses:	24	

CME Needs Assessment 2018-2019

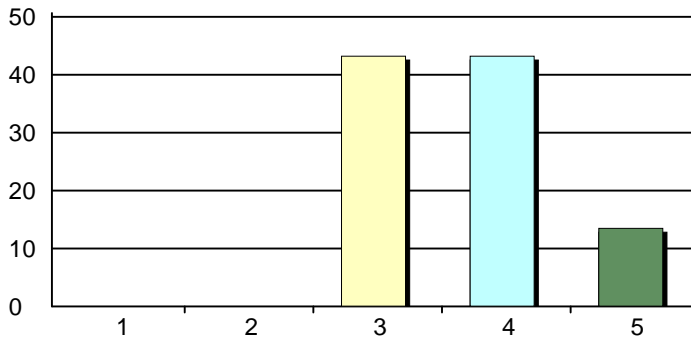
Survey Summary

73. Alur



1. Very Dissatisfied	0	0%
2. Dissatisfied	0	0%
3. Neutral	8	80%
4. Satisfied	0	0%
5. Very Satisfied	2	20%
Total Responses:	10	

74. Risk Management



1. Very Dissatisfied	0	0%
2. Dissatisfied	0	0%
3. Neutral	16	43%
4. Satisfied	16	43%
5. Very Satisfied	5	14%
Total Responses:	37	